

System package 10 Hotfix2



Date: 7. May 2019
Version: 002

Content:

1	Hotfix1 is part of Hotfix2.....	3
2	Description of the 1st Bugfix: "MOVIGEAR® DFC, DFC CIA and DSI (firmware version V4.00): Brake chopper Overcurrent message after switching the main supply".....	3
3	Description of the 2nd Bugfix: " Fieldbuses on CONTROLLER UHX25A and UHX45A do not support an application cycle > 1ms."	4

1 Hotfix1 is part of Hotfix2

Hotfix1 is part of Hotfix2 and does not have to be installed separately.

2 Description of the 1st Bugfix: "MOVIGEAR® DFC, DFC CIA and DSI (firmware version V4.00): Brake chopper Overcurrent message after switching the main supply".

Affected devices:

MOVIGEAR® DFC, DFC CIA and DSI, DSI CIA units with a firmware version V4.00 and a main FPGA firmware version < V1.06. In this example you see a "Main-FPGA" version V1.04:



The screenshot shows the MOVISUITE software interface. On the left, there is a navigation menu with categories: Device properties, Communication, Basic settings, and Drive train. Under Device properties, 'Device data' is selected. Under Drive train, 'Drive train DT1' and 'Optimization DT1' are listed. The main area displays '2.1.2 Main component' and a table titled 'Main firmware'.

	Part number	Version	Release
Main	18269958	04.00	201902211
Device Update Manager	18269974	04.00	201902211
Main-FPGA	18269427	01.04	201811281
Power section configuration data set	18268331	01.00	1
Bootloader	18267122	04.00	201902211

Problem description:

After switching the devices off and on, error 4.1 "Brake chopper overcurrent" occurs sporadically. The fault occurs after switching the mains supply off and on, if the device remains supplied with 24V. No error is reported if the device is not supplied with 24V and the mains supply is switched off and on. The error affects devices with firmware version V4.00. The device firmware must be updated by SEW-EURODRIVE employees. After the update, the main firmware version V4.00 is still displayed, only the FPGA firmware is updated to V1.06.

Associated MOVISUITE® version:

- v2.1.237.0 / SP10-B7.3

Solution:

Run the hotfix MOVISUITEstandardSP10-SP0HF2.exe. This updates the firmware stored in MOVISUITE v2.1.237.0. The problem is solved by the subsequent firmware update of the affected devices (done by a SEW-EURODRIVE employee).

Hint:

To install the hotfix you need administrator rights on the PC and the MOVISUITE® software must not be started. Do not use the uninstall function because files were permanently replaced when installing Hotfix2.

3 Description of the 2nd Bugfix: ” Fieldbuses on CONTROLLER UHX25A and UHX45A do not support an application cycle > 1ms.”

Affected devices:

The CONTROLLER UHX25A and UHX45A with firmware version V3.00 are affected.

Problem description:

When adjusting the application cycle, timeouts of the F-data occur and thus also timeouts of the process data within a few minutes from start-up.

A possible workaround:

The cycle time of the fieldbus data must be maintained at 1ms.

Associated MOVISUITE® version:

- v2.1.237.0 / SP10-B7.3

Solution:

Execute Hotfix2 (MOVISUITEstandardSP10-SP0HF2.exe) and then update with the firmware V3.01 installed by Hotfix2 at the affected UHX25A or UHX45A CONTROLLER's.

Hint:

To install hotfix2 you need administrator rights on the PC and the MOVISUITE® software must not be started. Do not use the uninstall function because files were permanently replaced when installing Hotfix2.

MOVI-C system package 10 – Hotfix2

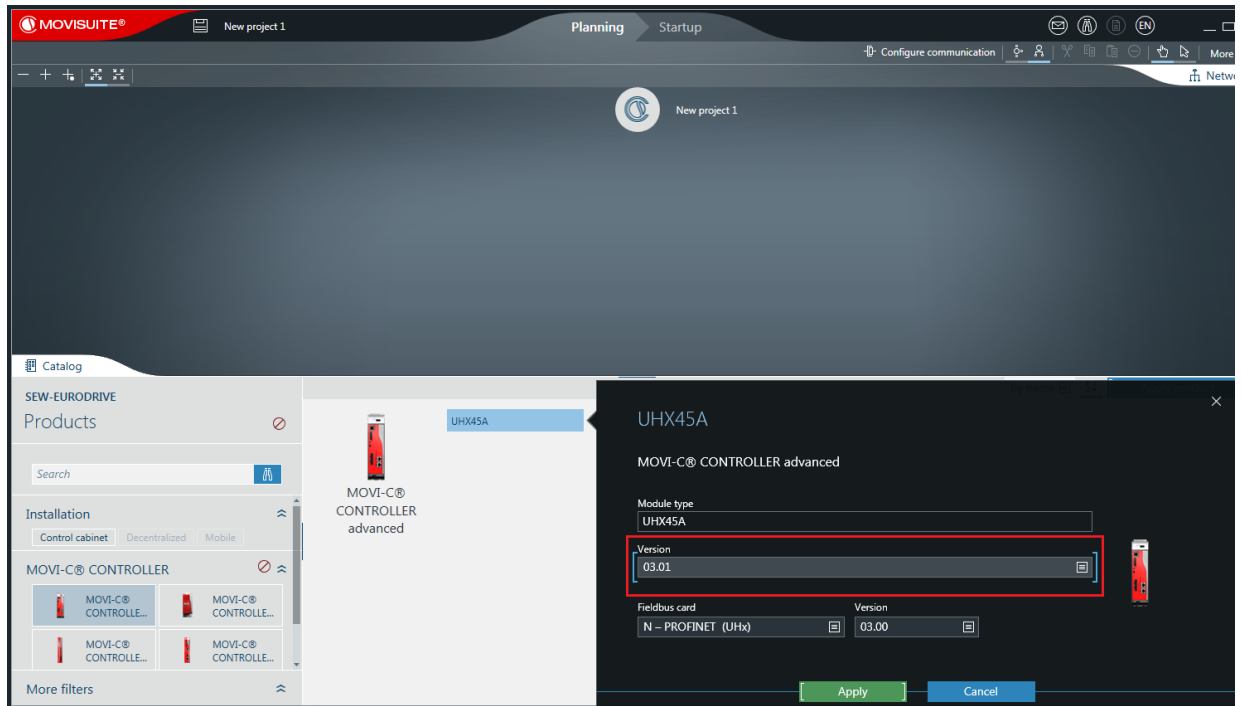
installation information



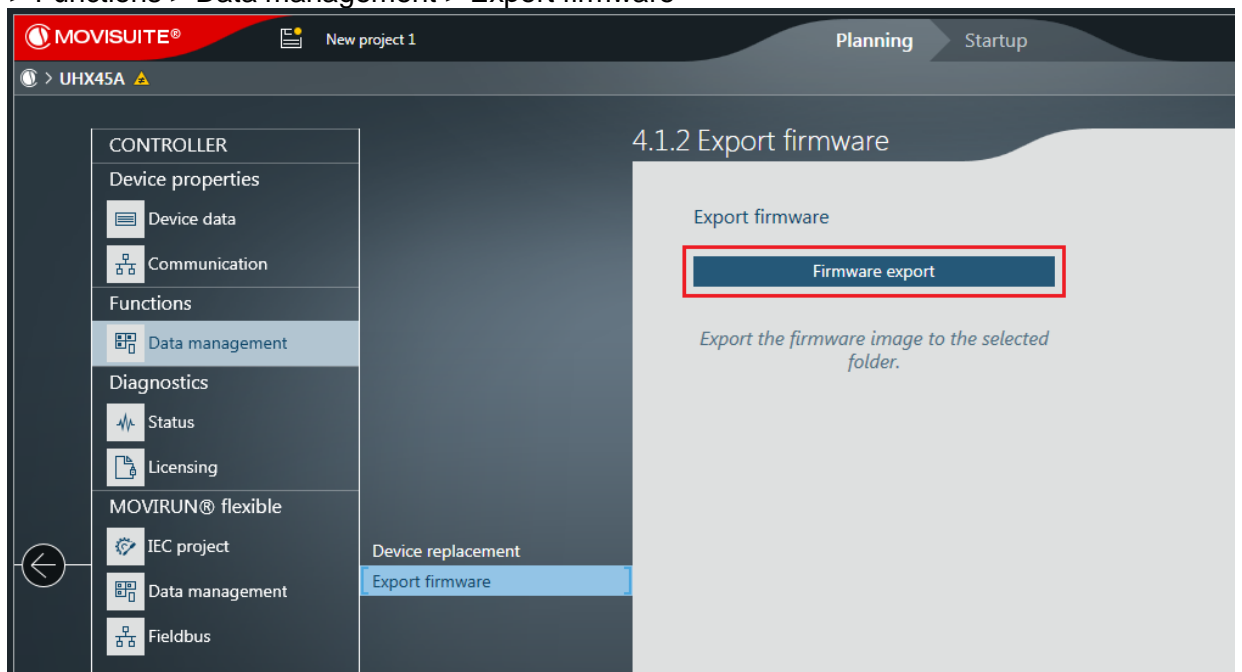
Instructions: Update of a UHX25A or UHX45A CONTROLLER from firmware 3.00 to 3.01:

Export firmware V3.01 from MOVISUITE®:

1. After installing Hotfix2 add, in a new MOVISUITE® project, the corresponding controller with firmware version V3.01.



2. Now you can export and unpack the firmware V3.01 in the CONTROLLER configuration area > Functions > Data management > Export firmware



Update the CONTROLLER:

3. Disconnect the CONTROLLER from power and insert the SD memory card into an appropriate reader and backup all files and folders 1 to 1 to the PC (data backup before firmware update).
4. Copy the unpacked firmware to the memory card and replace existing files. Do not delete the SD card before. There may be important data or licenses on it.
5. Insert the memory card back into the CONTROLLER and switch on the power again.

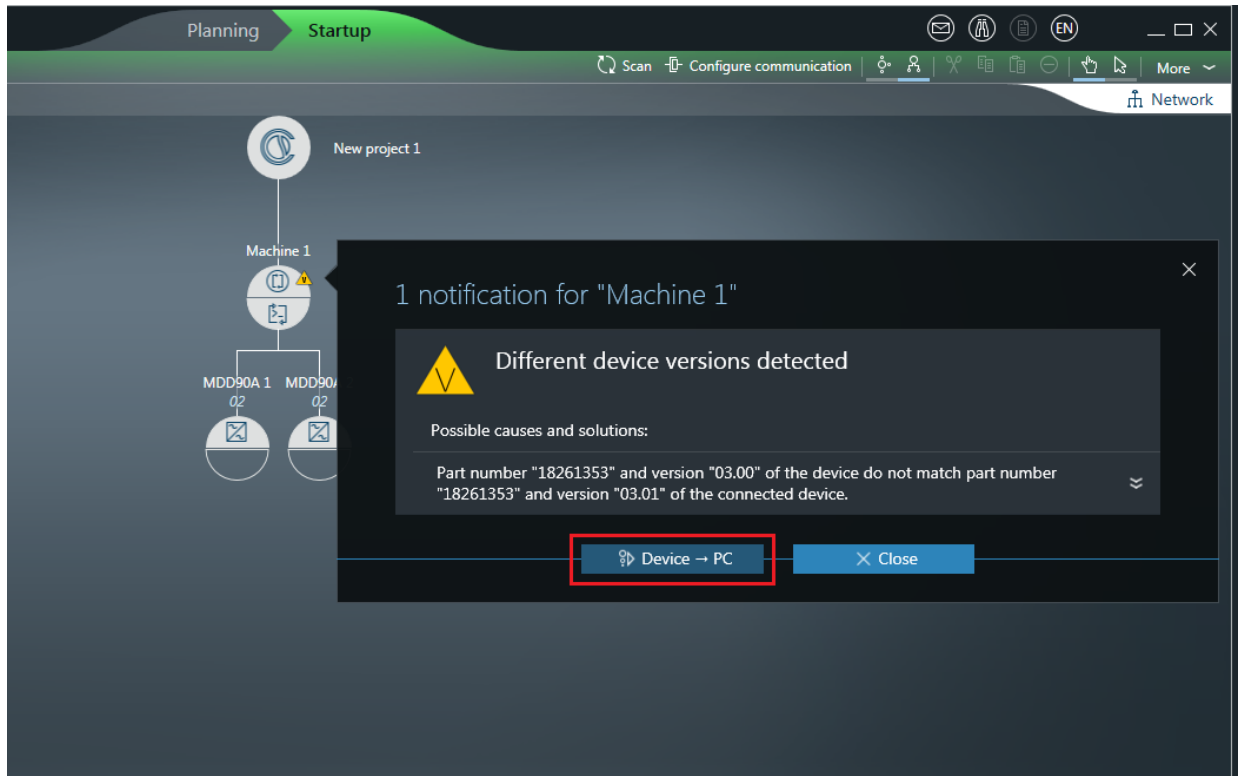
MOVI-C system package 10 – Hotfix2

installation information

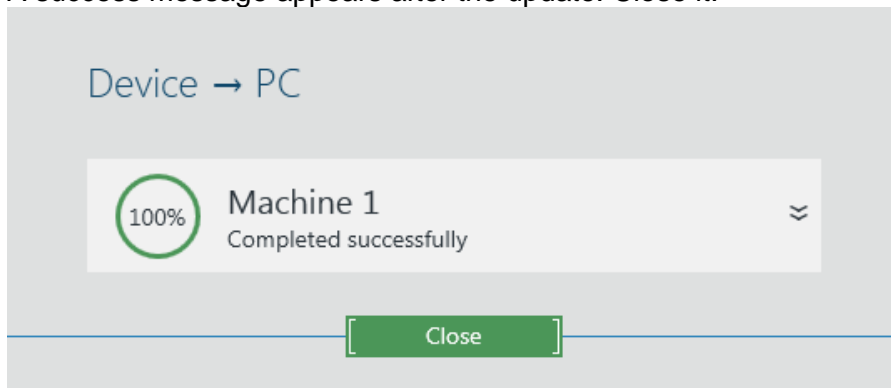


Update MOVISUITE® project:

6. Open the associated project in MOVISUITE®. Create an archive as a backup. Then establish a physical connection to the CONTROLLER and switch to the "Startup" mode. A "V" appears on the CONTROLLER. Click on it. The message "Different device versions detected" appears, click on the "Device -> PC" button.



7. A success message appears after the update. Close it.



MOVI-C system package 10 – Hotfix2

installation information



- At the end of the migration, perform an ordinary IEC project update. This will also update the configuration data. Finally save the MOVISUITE® project.

