



Installation Instructions



MOVISUITE® standard Version 2.10 Installation and Project Adjustment



Table of contents

1	General information.....	4
1.1	About this documentation	4
1.2	Content of the documentation.....	4
1.3	Decimal separator in numerical values	4
1.4	Product names and trademarks.....	4
1.5	Copyright notice.....	4
2	Safety notes	5
2.1	Preliminary information	5
2.2	Target group	5
2.3	Designated use	5
2.4	Network security and access protection	5
3	Introduction.....	6
3.1	Content of this documentation	6
3.2	Short designations	6
3.3	Assignment of system package to MOVISUITE® version	6
4	Installation.....	7
4.1	Before updating the software	7
4.1.1	Update required	7
4.1.2	No update required	10
4.1.3	Integrating axis modules	10
4.2	Requirements.....	11
4.2.1	Installation requirements	11
4.2.2	Hardware requirements.....	11
4.2.3	Requirements on the operating system	11
4.3	Installing the software	12
4.3.1	Preparing the installation.....	12
4.3.2	Performing the installation.....	13
4.3.3	Installation failed	13
4.4	Silent installation/uninstallation	14
4.4.1	Transfer parameters for starting the setup.....	14
4.4.2	Examples	14
4.4.3	Return codes.....	15
4.5	Firewall.....	16
5	Adjusting version and device.....	17
5.1	Planning phase	17
5.2	Startup phase.....	20
6	Overview of version numbers	23
	Index	27

1 General information

1.1 About this documentation

This documentation is an integral part of the product. The documentation is intended for all employees who perform work on the product.

Make sure this documentation is accessible and legible. Ensure that persons responsible for the systems and their operation as well as persons who work with the product independently have read through the documentation carefully and understood it. If you are unclear about any of the information in this documentation, or if you require further information, contact SEW-EURODRIVE.

1.2 Content of the documentation

The descriptions in this documentation apply to the software and firmware versions applicable at the time of publication. These descriptions might differ if you install later software or firmware versions. In this case, contact SEW-EURODRIVE.

1.3 Decimal separator in numerical values

In this document, a period is used to indicate the decimal separator.

Example: 30.5 kg

1.4 Product names and trademarks

The brands and product names in this documentation are trademarks or registered trademarks of their respective titleholders.

1.5 Copyright notice

© 2020 SEW-EURODRIVE. All rights reserved. Unauthorized reproduction, modification, distribution or any other use of the whole or any part of this documentation is strictly prohibited.

2 Safety notes

2.1 Preliminary information

The following general safety notes serve the purpose of preventing injury to persons and damage to property. They primarily apply to the use of products described in this documentation. If you use additional components, also observe the relevant warning and safety notes.

2.2 Target group

Software specialist Any work with the software may only be performed by a specialist with suitable training. A specialist in this context is someone who has the following qualifications:

- Appropriate training
- Knowledge of this documentation and other applicable documentation
- SEW-EURODRIVE recommends additional training for products that are operated using this software.

2.3 Designated use

The MOVISUITE® engineering software is the operating platform for all MOVI-C® hardware and software components.

Use the device-independent MOVISUITE® engineering software to start up and configure the axes and to download the complete configuration to a MOVI-C® CONTROLLER.

Observe the documentation for the components used.

Unintended or improper use of the product may result in severe injury to persons and damage to property.

2.4 Network security and access protection

A bus system makes it possible to adapt electronic drive technology components to the particulars of the machinery within wide limits. There is a risk that a change of parameters that cannot be detected externally may result in unexpected but not uncontrolled system behavior and may have a negative impact on operational safety, system availability, or data security.

Ensure that unauthorized access is prevented, especially with respect to Ethernet-based networked systems and engineering interfaces.

Use IT-specific safety standards to increase access protection to the ports. For a port overview, refer to the respective technical data of the device in use.

3 Introduction

3.1 Content of this documentation

The documentation in hand enables you to install the engineering software correctly and to adjust existing projects to the latest version of MOVISUITE®.

3.2 Short designations

The following short designations are used in this documentation. For an overview, see chapter "Overview of version numbers" (→ 23):

Product designation	Short designation
MOVISUITE® standard	MOVISUITE®
MOVISUITE® version V2.1.237.0	MOVISUITE® V2.1
MOVISUITE® version V2.2.12.0	MOVISUITE® V2.2
MOVISUITE® version V2.10.52.0	MOVISUITE® V2.10
<ul style="list-style-type: none"> • MOVI-C® CONTROLLER power UHX85A • MOVI-C® CONTROLLER progressive UHX65A • MOVI-C® CONTROLLER advanced UHX45A • MOVI-C® CONTROLLER standard UHX25A 	MOVI-C® CONTROLLER

3.3 Assignment of system package to MOVISUITE® version

INFORMATION



The designation "system packages" will no longer be used from MOVISUITE® version V2.2.

Assignment of system package to MOVISUITE® version

The following table shows the assignment of system packages to the respective MOVISUITE® version.

System package	Version
SP7	MOVISUITE® V1.1
SP8	MOVISUITE® V1.2
SP9.1	MOVISUITE® V2.0
SP10	MOVISUITE® V2.1

4 Installation

4.1 Before updating the software

INFORMATION



When you update to MOVISUITE® V2.10, an existing IEC project can only be used with MOVI-C® CONTROLLERS that have a firmware version which is compatible with MOVISUITE® V2.10.

INFORMATION



Changes to MOVI-C® devices may only be made with the matching MOVISUITE® version.

For an overview of versions of MOVI-C® devices for MOVISUITE® versions, refer to chapter "Overview of version numbers" (→ 23).

4.1.1 Update required

An update to MOVISUITE® V2.10 is required in the following cases:

- You want to use one of the two new FIELD CONTROLLERS MFC1.
- You want to use the CFP21 PROFIBUS interface card for a MOVIDRIVE® technology inverter.

New functions

- MOVISUITE® installation
 - Silent installation and uninstallation, which means without graphical user interface.
- Configuring a multi-motor drive
 - Several identical, permanently coupled motors on one inverter
- Configuring a group drive
 - Several identical, loosely coupled or non-coupled motors on one inverter
 - Several different motors on one inverter
- Parameter adjustments and additions to the drive train
 - Various MOVILINK® DDI label parameter locks were deleted in the drive train.
 - The output filter for MOVIDRIVE® inverters can be activated (controller settings).
 - Precontrol of a hoist can now be parameterized (controller settings).
- Basic functions
 - Zoom function in the network and function views
 - Automatic backup after delivery state/basic initialization
 - Detailed device type icons in the tree view
 - The device designation, i.e. the name of the inverter, is maintained after a firmware update.
- MOVI-C® CONTROLLER engineering
 - The cycle time can be specified in the configuration section of the MOVI-C® CONTROLLER.
 - Code generation sets the cycle time in the bus cycle task (HighPrio) and the cycle time of the EtherCAT® master.
- Motor catalog
 - Known third-party motors and older SEW motors added to the catalog

New MOVIKIT® software modules

- RapidCreepPosition Drive
- Encoder Interface
- Gearing (SingleAxis)
- New add-on for motion: AntiSway
- MultiMotion Gearing
- New add-ons for MultiMotion: Position Controller and CombinedEncoderEvaluation
- New add-ons for MultiMotion Camming: Interpolation and AntiSlosh
- New add-ons for MultiAxisController: FourAxes and Cascading
- Stacker Crane with the following add-ons: PositionCon
- New add-on for robotics: Touchprobe

New firmware version 06.00 for all MOVI-C® inverters:

- Jerk limitation can be used when changing the FCB without triggering a direction of rotation.

- MOVISAFE® CSB51A: FailSafe over EtherCAT® safety protocol (FSOE) can be used.
- Precontrol for hoists in the drive train can be configured.
- Process data source set to "No source": Error messages from fieldbus options are suppressed by the inverter. The drive can be controlled using other sources.
- New binary message "Safety card validated".
- The flying start function for the ELSM method has been revised and is now permanently active by default.
- Improved starting for the ELSM method with unfavorable initial position.
- The breakaway torque during starting can be configured by means of a control bit and a parameterizable torque.
- The safe brake test "BST" and the non-safe brake test directly with FCB 21 have been further developed.
- Brake current monitoring has been added to third-party brakes.

New MOVI-C® CONTROLLER firmware versions

- For UHX25A, UHX45A, UHX65A, FHX25A, FHX45A: V04.00
- For UHX85A: V05.00
- The EtherCAT/SBus^{PLUS} master can be restarted by a command, e.g. to detect further slaves.
- Missing Sew libraries and device descriptions can be directly reloaded in the IEC Editor.
- OPC UA server for UHX65A: MOVIKIT® OPC UA
- MOVISAFE® CSB51A: FailSafe over EtherCAT® safety protocol (FSOE) can be used.
- Alarms can be generated in the IEC program and sent via the PROFINET fieldbus.
- IEC programs can be sent to the MOVI-C® CONTROLLER via the fieldbus communication interface.
- UHX65 4-core: Windows section for display port or web visualizations.
- The system time can be set via IEC FB, Shell or MOVISUITE®.
- Data consistency of safe and non-safe data in fieldbus PDs with different cycle times.
- UHX65A and UHX85A: Expansion to 64 standard process data slots for PROFINET.
- Multi-core support: More usable time within the 1 ms task.
→ Number of usable axes increased for controllers UHX25, UHX45, UHX65A-x-02, and UHX65A-x-04
- A controller can be replaced by plugging the removable storage medium into an identical device.

4.1.2 No update required

If none of the cases mentioned in the chapter "Update required" (→ 7) applies, you need not necessarily update to MOVISUITE® V2.10.

4.1.3 Integrating axis modules

Axis modules can only be operated on a MOVI-C® CONTROLLER with the same firmware version or a later one. If the firmware of the axis modules is older than the MOVI-C® CONTROLLER, you will have to update the firmware of the axis modules.

For support in updating the firmware, contact SEW-EURODRIVE Service.

4.2 Requirements

4.2.1 Installation requirements

Before installing MOVISUITE®, observe the following requirements:

- You must have administrator rights for your PC.
- You can install only **one** MOVISUITE® version on your PC.

Before changing to the latest MOVISUITE® version, read the instructions in chapter "Before updating the software" (→ 7).

- If MOVISUITE® up to version V1.1 is installed on your PC, uninstall this version first. From version V1.1, the predecessor version is uninstalled automatically when installing MOVISUITE®.

4.2.2 Hardware requirements

Processor	1 GHz 32-bit processor (x86) or 64-bit processor
RAM	At least 4 GB RAM, recommended are 8 GB RAM
Hard disk	14.5 GB of free memory in total, 14.4 GB of that on the operating system hard disk for complete installation of MOVISUITE®
Graphics card	2 GB graphics memory
Resolution	The default resolution is full HD resolution. A resolution of 1280 x 800 is appropriate.

4.2.3 Requirements on the operating system

Operating system	<p>MOVISUITE® is a 32-bit application.</p> <p>The following operating system variants are permitted:</p> <ul style="list-style-type: none"> • Windows 8.1 32-bit/64-bit • Windows 10 32-bit/64-bit Version 1809 or a later version
Redistributables	<p>The following Microsoft components must also be installed:</p> <ul style="list-style-type: none"> • Microsoft Windows Installer 3.1 or higher • Microsoft.NET Framework 4.7.2

4.3 Installing the software

INFORMATION



The installation of MOVISUITE® V2.10 may take longer than 90 minutes. The time needed for installation is shorter if MOVISUITE® V2.2 is already installed on your PC.

INFORMATION



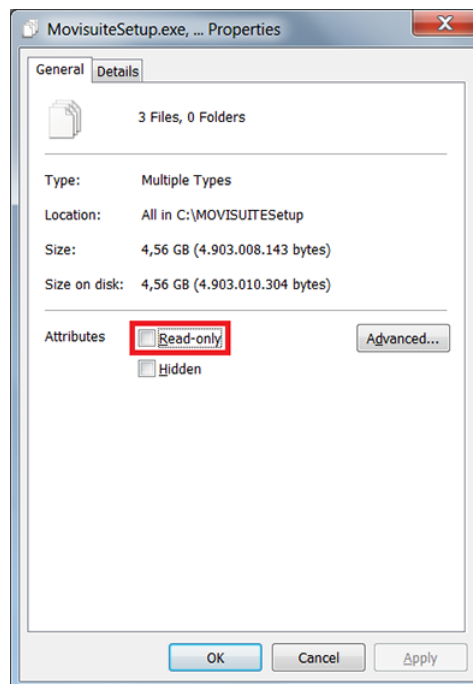
If you have already installed MOVISUITE® on your PC and you have worked with MOVISUITE® or the IEC Editor after having started your PC last time, then start your PC again before installing a new MOVISUITE® version.

MOVISUITE® is installed in several steps:

- "Preparing the installation" (→ 12)
- "Performing the installation" (→ 13)

4.3.1 Preparing the installation

1. Copy the following installation files to the hard disk of your PC: `movi-suite.syspkg`, `MOVISUITE-Licence.txt`, `MovisuiteSetup.exe`.
2. If the installation files are available on a write protected medium (e.g. on a DVD), then remove the write protection from all 3 installation files. To do so, open the context menu with a right mouse-click and open the properties of the files.
3. On the "General" tab, disable the "Read only" check box.



9007229586357131

26939657/EN – 07/2020

4.3.2 Performing the installation

1. Run the "MovisuiteSetup.exe" installation file.
 - ⇒ The software is installed using a wizard.
2. If a message appears during installation prompting you to reboot your computer, perform the reboot.
 - ⇒ After the reboot, start and run the MOVISUITE® installation again.

4.3.3 Installation failed

In rare cases, virus scanners or firewalls can cause problems when installing MOVISUITE®. In this case, refer to the log files of the virus scanner or the firewall for information on possible problems.

4.4 Silent installation/uninstallation

The setup of MOVISUITE® allows for silent installation and uninstallation, which means without graphical user interface.

Allows for automating the installation to distribute and manage MOVISUITE® within companies.

The following is available for automated use of the setup:

- Transfer parameters to start the setup.
- Return codes for evaluation by an own program logic.

Following a list of transfer parameters and return codes.

4.4.1 Transfer parameters for starting the setup

Designation	Transfer parameters	Description and example
Installation type	-u	Uninstallation (MOVISUITE® and modules, without IEC Editor) Default value: No entry → complete installation
Target folder	-p	Target folder where the software package will be installed. Example: -p"C:\temp" "C:\Program Files (x86)\SEW" should be used preferably. This is the default target folder. The "MOVISUITE standard" folder is appended automatically at the end: "C:\temp\MOVISUITE standard".
User interface level	-qn	Automatic (un)installation without user interface. (For result, see "return codes") Default: no automatic (un)installation

4.4.2 Examples

Command line for silent installation:

```
MovisuiteSetup.exe -p"C:\Program Files (x86)\SEW" -qn
```

Command line for silent uninstallation:

```
MovisuiteSetup.exe -u -qn
```


4.4.3 Return codes

Return code	Description
0	Setup successful.
-1	Error A detailed log file is saved in the log folder. This folder is located parallel to the target folder (e.g.: C:\Program Files (x86)\SEW\Logs)
-2	Setup successful, restart necessary.
-3	Partial installation successful, restart necessary. Installation will continue after restart (does not apply to silent installation).
-4	Partial installation successful, restart necessary. Installation must be continued manually after restart.
-5	.Net-Framework 4.5 or later missing
-6	Faulty command line parameters
-7	Faulty path entered in the command line
-8	Setup aborted by the user (does not apply to silent installation)

4.5 Firewall



INFORMATION

Enabling the programs in your firewall

If you do not use a Windows firewall, make sure the following programs are enabled in your firewall.

All programs of the software package must be enabled in your firewall in order to use MOVISUITE®.

Program	Protocols	Ports
SEW.CS2.Client.exe		300-310
SEW.CS2.Server.Communication Controller.Starter.exe (for versions lower than V2.10.x.x)		8001
SEW.CS2.Server.ProTon.Starter.exe		16001
SEW.CS2.Server.ServerFramework.exe		
SEW.CS2.ModuleCreator.RestApiHost.exe (optional)	TCP/IP	8001, 16001
CODESYS.exe	TCP	11740-11743
GatewaySysTray.exe	UDP	1740-1743
GatewayService.exe		
CODESYSHMI.exe		
Remote maintenance FTP	TCP	21
Remote maintenance telnet	TCP	23

5 Adjusting version and device

From MOVISUITE® version V2.2 you can change the components and versions of a device within a MOVISUITE® project. The function is available for the following components:

- MOVI-C® CONTROLLER
- Inverters
- Virtual axes
- Software nodes

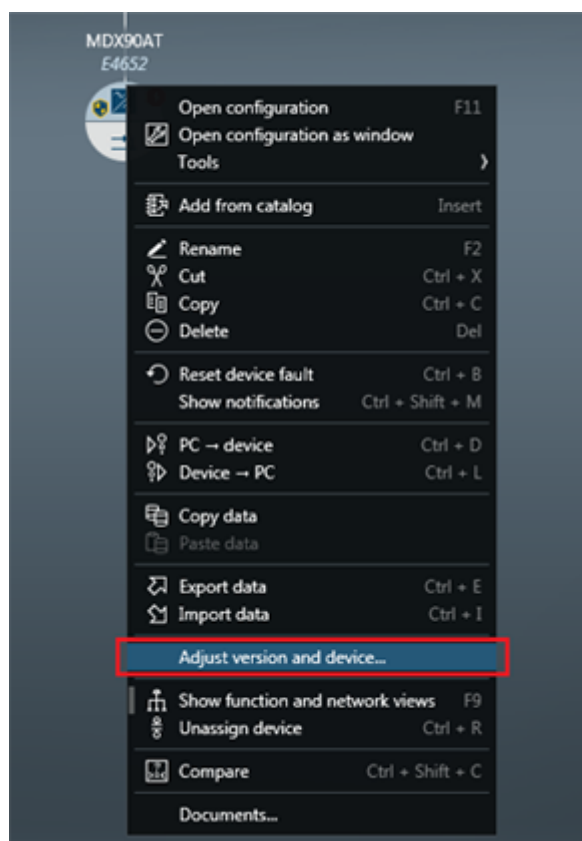
5.1 Planning phase

In the planning phase, you can make the following adjustments:

- Firmware version of the main component
- Type and firmware version of the subcomponents
- Type and software version of the software module

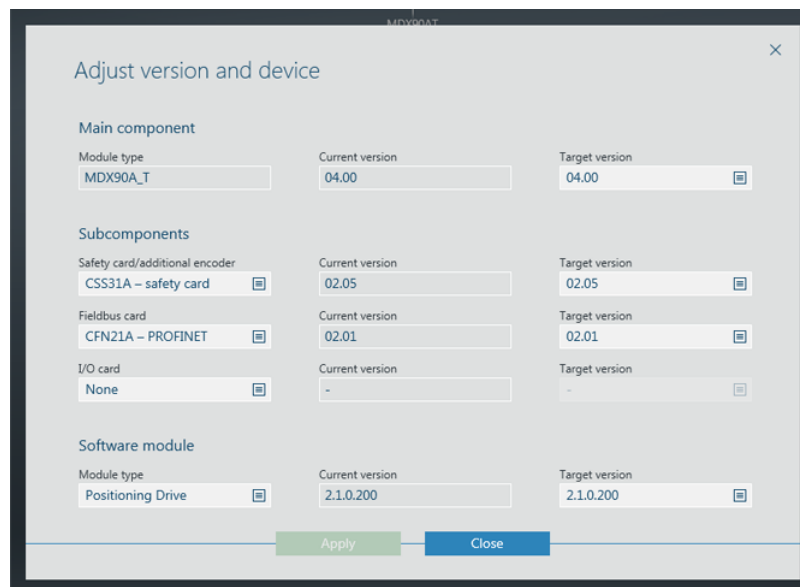
Proceed as follows:

1. Right-click on the device node you want to change.
2. In the context menu, click [Adjust version and device].



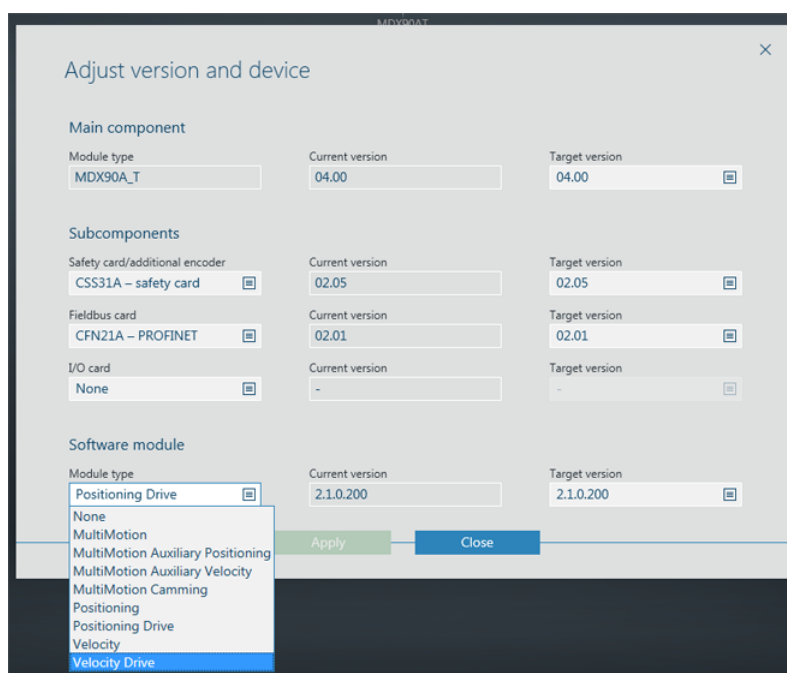
30580112651

⇒ The "Adjust version and device" window opens.



30331630731

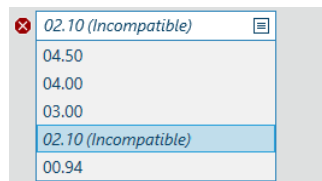
3. Select the component you want to change. For example, if you want to change the software module, select it from the "Module type" drop-down list.



30331625867

4. Select the version of the component from the "Target version" drop-down list. If a subcomponent or a software module was changed, the latest version will be preselected automatically.
 - ⇒ MOVISUITE® checks whether the selected target versions are compatible with one another.
 - ⇒ A green symbol indicates that the selected version is compatible.
 - ⇒ A red symbol indicates that the selected version is not compatible. Incompatible target versions are indicated as such in the drop-down list.

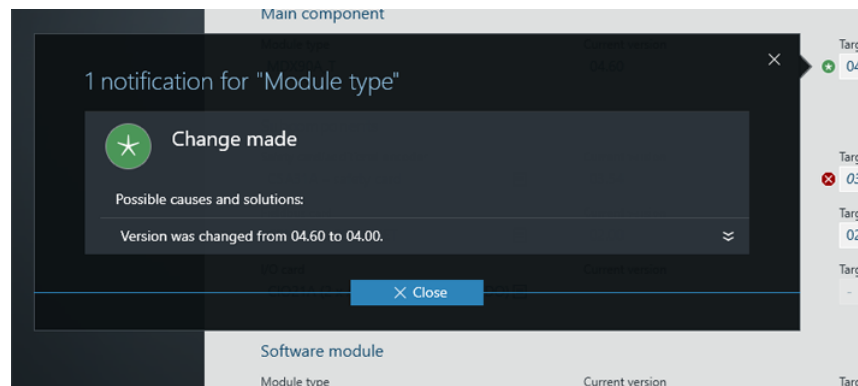
26939657/EN – 07/2020



30331621003

5. To check between which components or versions a change was made, click the green symbol.

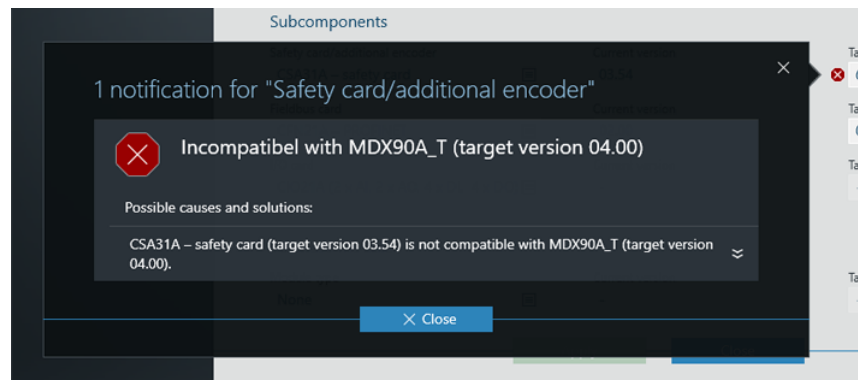
⇒ The information appears in a notification window.



9007229677352075

6. To obtain information on the cause of the incompatibility and how to remedy the error, click the red symbol.

⇒ The information appears in a notification window.

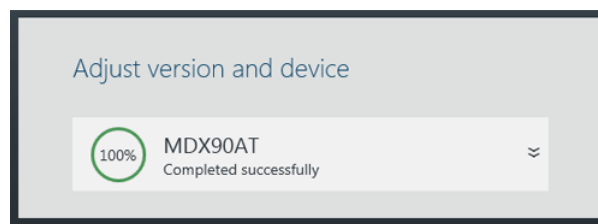


9007229677311243

7. Rectify any incompatibilities.
8. Click [Apply].

30331628299

⇒ The changes are saved.



30331623435

5.2 Startup phase

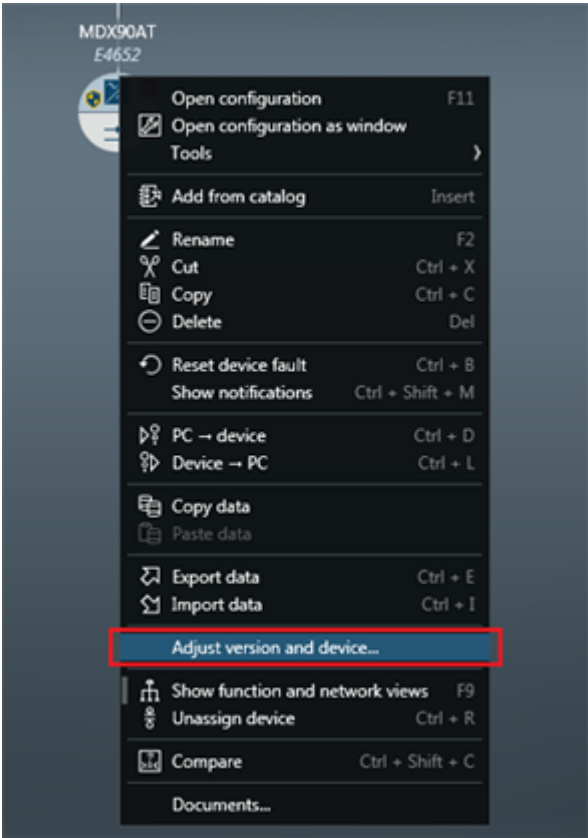
In the startup phase, you can change the type and the software version of the software module.

Main components and subcomponents cannot be changed because in this case the change is a firmware change. In this case, contact SEW-EURODRIVE Service.

Proceed as follows:

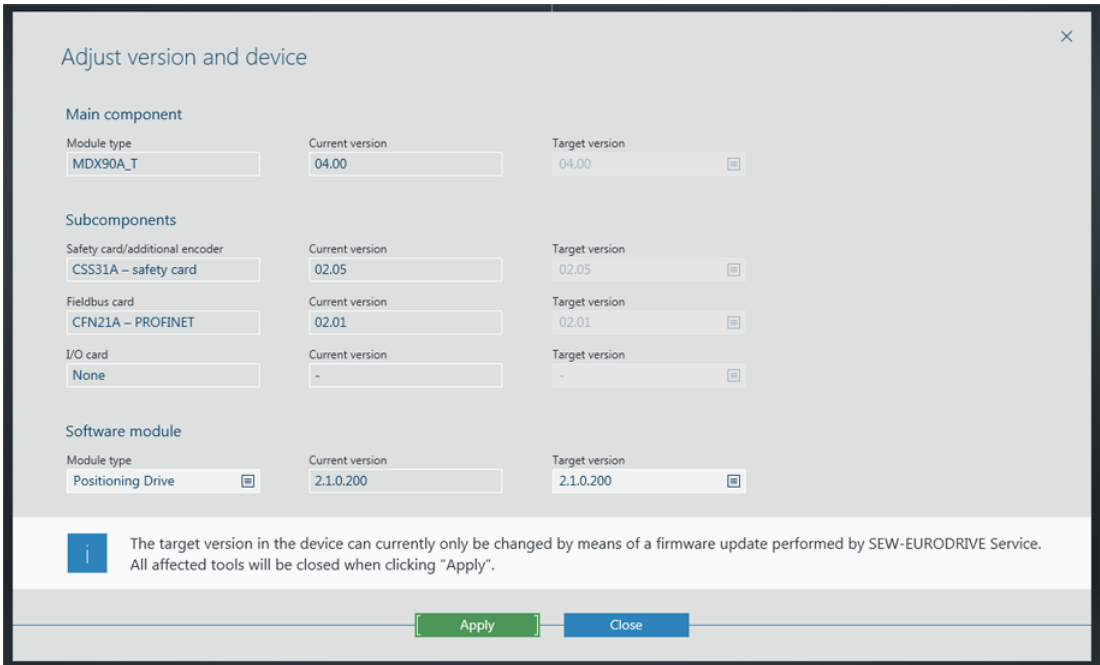
1. Right-click on the device node you want to change.

2. In the context menu, click [Adjust version and device].



30580112651

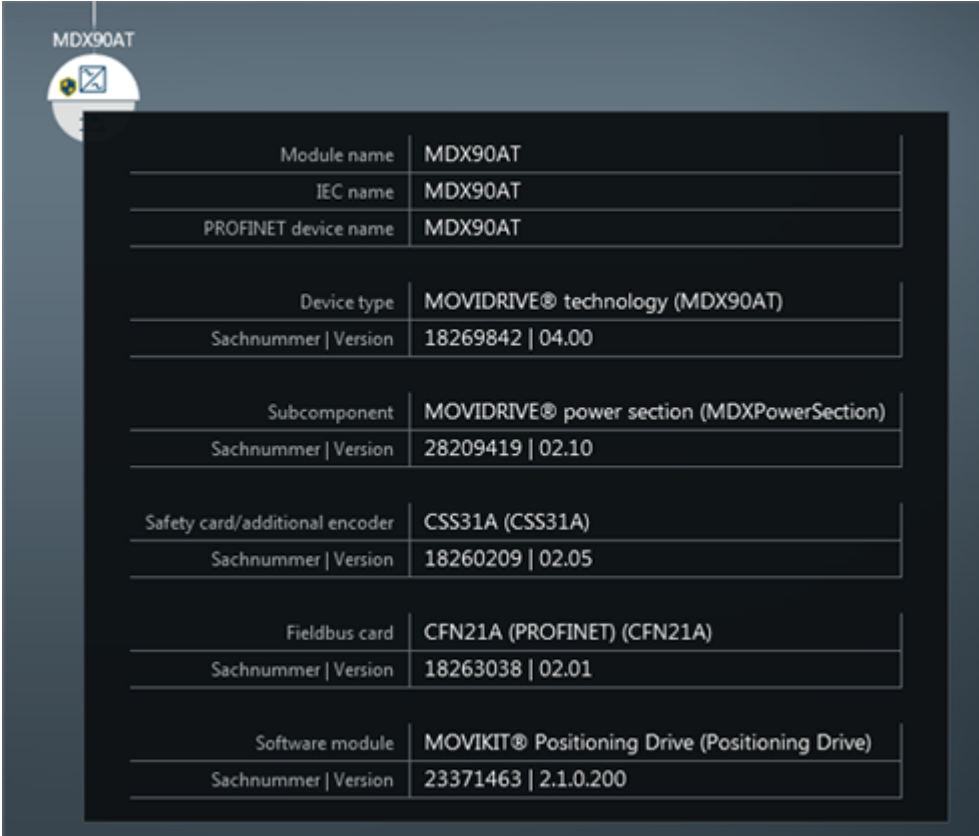
⇒ The "Adjust version and device" window opens.



30331188875

3. Change the type and/or the version of the software module.

4. Click [Apply].
 - ⇒ The changes are saved.
5. To check the current firmware version of main components and subcomponents as well as the software version of software modules, position the mouse pointer over the device whose version you want to have displayed.
 - ⇒ The current versions are displayed in a tooltip.



Module name	MDX90AT
IEC name	MDX90AT
PROFINET device name	MDX90AT
Device type	MOVIDRIVE® technology (MDX90AT)
Sachnummer Version	18269842 04.00
Subcomponent	MOVIDRIVE® power section (MDXPowerSection)
Sachnummer Version	28209419 02.10
Safety card/additional encoder	CSS31A (CSS31A)
Sachnummer Version	18260209 02.05
Fieldbus card	CFN21A (PROFINET) (CFN21A)
Sachnummer Version	18263038 02.01
Software module	MOVIKIT® Positioning Drive (Positioning Drive)
Sachnummer Version	23371463 2.1.0.200

30331186443

6 Overview of version numbers

Refer to the following table to assign a hardware component and software component to a MOVISUITE® version. Only the latest version numbers of software and hardware are listed. Information: A total of 5 module update packages is available for MOVISUITE® version 2.2.12.0. The overview shows only the latest package (V2.2.11.5).

Engineering software	Series versions			Module update package	Series version
Component	V2.0 (SP9.1)	V2.1 (SP10)	V2.2	V2.2.11.5	V2.10
MOVISUITE®	V2.0.114.100	V2.1.237.0	V2.2.12.0	V2.2.11.5	V2.10.52.0
IEC Editor	3.5 SP12 patch 3	3.5 SP13 patch 1	3.5 SP14 patch 3	3.5 SP14 patch 3	3.5 SP14 patch 3
SEW profile (IEC)	SEW 3.5.12.3 (V5)	SEW 3.5.13.1 (V6)	SEW 3.5.14.3 (V7)	SEW 3.5.14.3 (V7)	SEW 3.5.14.3 (V7)

IEC libraries	Series versions			Module update package	Series version
Component	V2.0 (SP9.1)	V2.1 (SP10)	V2.2	V2.2.11.5	V2.10
SEW IoDrvEtherCAT	1.3.200.0	1.4.200.0	1.4.200.0	1.4.200.0	1.5.200.0
SEW IoDrvLogicalDevicePool	1.1.200.0	1.3.200.0	1.4.200.0	1.4.200.0	1.5.200.0
SEW Common Fieldbus Slave Ext.	1.3.200.0	1.4.200.0	1.4.200.0	1.4.200.0	1.5.200.0
SEW DeviceHandler	1.1.200.1	1.3.200.0	1.3.200.0	1.3.200.0	1.5.200.1
SEW DeviceHandler Interfaces	–	1.0.100.7	1.0.100.7	1.0.100.7	1.0.100.7
SEW DeviceHandler Interfaces 2	1.1.200.1	1.1.200.1	1.1.200.1	1.1.200.1	1.2.200.1
SEW DeviceHandler Interfaces 3	–	1.3.200.0	1.3.200.0	1.3.200.0	1.4.100.0
SEW PDO Handling	1.0.200.0	1.0.200.0	1.0.200.0	1.0.200.0	1.0.200.0

MOVIKIT® software modules	Series versions			Module update package	Series version
Component	V2.0 (SP9.1)	V2.1 (SP10)	V2.2	V2.2.11.5	V2.10
Velocity Drive	1.1.200.1	2.0.0.200	2.0.0.200	2.0.0.200	3.0.3.200
Positioning Drive	–	2.0.0.200	2.1.0.200	2.1.0.200	3.0.2.200
RapidCreepPositioning Drive	–	–	–	–	3.2.0.200
EncoderInterface	–	–	–	–	1.0.34.200
MOVIRUN® flexible	–	–	–	1.1.15.200	1.2.101.200
MultiMotion	2.0.200.0	2.4.13.200	2.4.18.200	2.4.18.200	2.5.155.200

MOVIKIT® software modules	Series versions			Module update package	Series version
Component	V2.0 (SP9.1)	V2.1 (SP10)	V2.2	V2.2.11.5	V2.10
MultiMotion Camming	2.0.200.0	2.3.28.200	2.3.34.200	2.3.34.201	2.4.169.200
Robotics	2.0.200.0	2.3.21.200	2.3.24.200	2.3.24.200	2.5.56.200
MultiAxis Controller	2.0.200.0	2.6.20.200	2.6.28.200	2.6.28.200	2.7.217.200
MultiMotion Auxiliary Velocity	1.0.200.0	1.4.11.200	1.4.13.200	1.4.13.200	1.5.87.200
MultiMotion Auxiliary Positioning	1.0.200.0	1.4.11.200	1.4.13.200	1.4.13.200	1.5.87.200
Velocity	–	1.3.21.200	1.3.25.200	1.3.25.201	1.5.74.200
Positioning	–	1.3.21.200	1.3.25.200	1.3.25.201	1.4.173.200
Gearing	–	–	–	–	1.0.134.200
StackerCrane	–	–	–	–	1.6.28.200
StackerCrane MultiAxisController	–	–	–	–	1.6.28.200
StackerCrane MultiMotion	–	–	–	–	1.6.28.200
DirectMode	–	–	1.1.45.200	2.0.44.200	2.0.89.201
PowerMode	–	–	1.1.59.200	2.0.49.200	2.0.105.201
EnergyMode	–	–	–	1.0.21.200	1.0.73.201

MOVI-C® CONTROLLER	Series versions			Module update package	Series version
Component	V2.0 (SP9.1)	V2.1 (SP10)	V2.2	V2.2.11.5	V2.10
power (UHX85A)	03.00	04.00	04.02	04.04	05.00
progressive (UHX65A)	02.00	03.00	03.02	03.04	04.00
advanced (UHX45A)	02.00	03.00	03.02	03.04	04.00
standard (UHX25A)	02.00	03.00	03.02	03.04	04.00
FIELDCONTROLLER advanced (FHX45A)	–	–	–	–	04.00
FIELDCONTROLLER standard (FHX25A)	–	–	–	–	04.00

MOVIDRIVE® modular	Series versions			Module update package	Series version
Component	V2.0 (SP9.1)	V2.1 (SP10)	V2.2	V2.2.11.5	V2.10
MDA90A (single-axis module)	03.00	04.00 SN ¹⁾ : 18259774	04.00 SN ¹⁾ : 18259774	05.00 SN ¹⁾ : 18259774	06.00 SN ¹⁾ : 18259774
MDA90A (single-axis module with MOVILINK® DDI)	–	04.00 SN ¹⁾ : 18272576	04.01 SN ¹⁾ : 18272576	05.00 SN ¹⁾ : 18272576	06.00 SN ¹⁾ : 18272576
MDA90A-CIA402 (single-axis module)	03.00	04.00 SN ¹⁾ : 18266320	04.00 SN ¹⁾ : 18266320	05.00 SN ¹⁾ : 18266320	06.00 SN ¹⁾ : 18266320
MDA90A-CIA402 (single-axis module with MOVILINK® DDI)	–	04.00 SN ¹⁾ : 18272592	04.01 SN ¹⁾ : 18272592	05.00 SN ¹⁾ : 18272592	06.00 SN ¹⁾ : 18272592
MDD90A (double-axis module)	03.00	04.00	04.00	05.00	06.00
MDD90-CIA402 (double-axis module)	03.00	04.00	04.00	05.00	06.00
MDD91A (double-axis module with MOVILINK® DDI)	–	–	04.10	05.00	06.00
MDD91A-CIA402 (double-axis module with MOVILINK® DDI)	–	–	04.10	05.00	06.00
MDP92A (power supply module with controlled DC link voltage)	–	–	–	01.04	01.05
MDE90A (DC/DC converter module)	–	–	–	01.03	01.04

1) SN = serial number

MOVIDRIVE® system	Series versions			Module update package	Series version
Component	V2.0 (SP9.1)	V2.1 (SP10)	V2.2	V2.2.11.5	V2.10
MDX	03.00	04.00 SN ¹⁾ : 18259731	04.00 SN ¹⁾ : 18259731	05.00 SN ¹⁾ : 18259731	06.00 SN ¹⁾ : 18259731
MDX (with MOVILINK® DDI)	–	04.00 SN ¹⁾ : 18269842	04.00 SN ¹⁾ : 18269842	05.00 SN ¹⁾ : 18269842	06.00 SN ¹⁾ : 18269842
MDX-CIA402	03.00	04.00 SN ¹⁾ : 18267572	04.00 SN ¹⁾ : 18267572	05.00 SN ¹⁾ : 18267572	06.00 SN ¹⁾ : 18267572

MOVIDRIVE® system	Series versions			Module update package	Series version
Component	V2.0 (SP9.1)	V2.1 (SP10)	V2.2	V2.2.11.5	V2.10
MDX-CiA402 (with MOVILINK® DDI)	–	04.00 SN ¹⁾ : 18269877	04.00 SN ¹⁾ : 18269877	05.00 SN ¹⁾ : 18269877	06.00 SN ¹⁾ : 18269877

1) SN = serial number

MOVIDRIVE® technology	Series versions			Module update package	Series version
Component	V2.0 (SP9.1)	V2.1 (SP10)	V2.2	V2.2.11.5	V2.10
MDX_T	–	04.00	04.00	05.00	06.00

MOVI-C® decentralized drive electronics	Series versions			Module update package	Series version
Component	V2.0 (SP9.1)	V2.1 (SP10)	V2.2	V2.2.11.5	V2.10
DFC	03.10	04.00	04.00	05.10	06.00
DFC-CiA402	03.10	04.00	04.00	05.10	06.00
DSI	03.10	04.00	04.00	05.10	06.00
MOVISAFE® CSB51A safety card	–	02.05	02.05	02.05	02.05
DAC	–	–	–	05.10	06.00
DBC	–	–	–	05.10	06.00
DSI-CiA402	–	–	–	05.10	06.00

MOVISAFE® safety cards	Series versions			Module update package	Series version
Component	V2.0 (SP9.1)	V2.1 (SP10)	V2.2	V2.2.11.5	V2.10
CSS21A	01.05	02.05	02.05	02.05	02.05
CSB21A	01.05	02.05	02.05	02.05	02.05
CSS31A	01.05	02.05	02.05	02.05	02.05
CSB31A	01.05	02.05	02.05	02.05	02.05

Index

A

Axis module	
Firmware update required	7

C

Content of the documentation	6
Copyright notice	4

D

Decimal separator	4
-------------------------	---

F

Firewall	16
Firewall, installation problems	13

H

Hardware requirements	11
-----------------------------	----

I

Install	13
Failed	13
Installation	7
Installation files	12
Installation requirements	11
Administrator rights	11
Hardware requirements	11
Requirements on the operating system	11

M

MOVISUITE®	
No project update required	7

Project update required	7
MOVISUITE®, number of installed versions	11

P

Product names	4
---------------------	---

R

Requirements on the operating system	11
--	----

S

Safety notes	
Bus systems	5
Preliminary information	5
Short designation in the documentation	6
Silent installation	14
Examples	14
Return codes	15
Transfer parameters	14
Startup phase	
Changing hardware component	20
Changing software module	20
Changing subcomponent	20

T

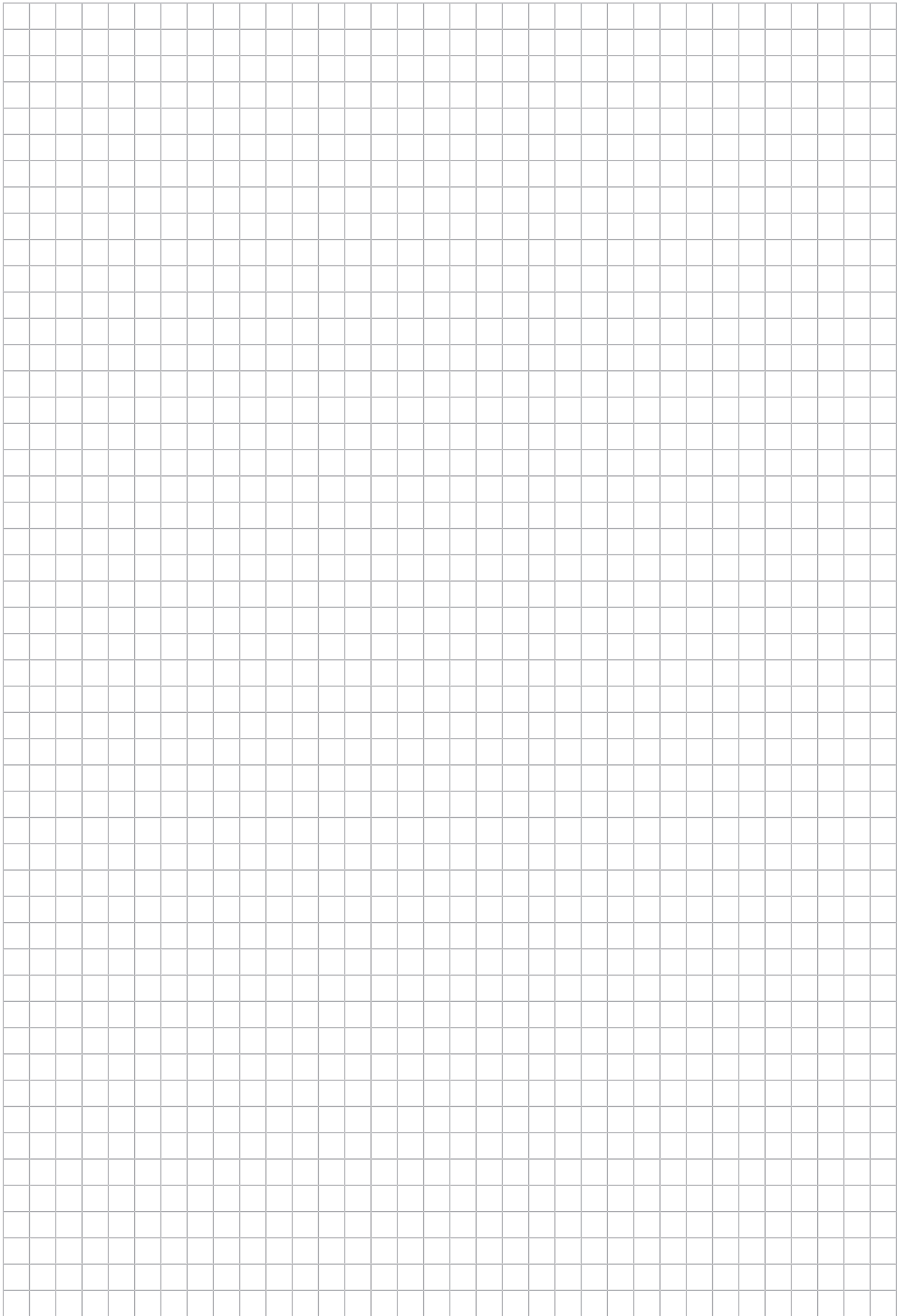
Target group	5
Trademarks	4

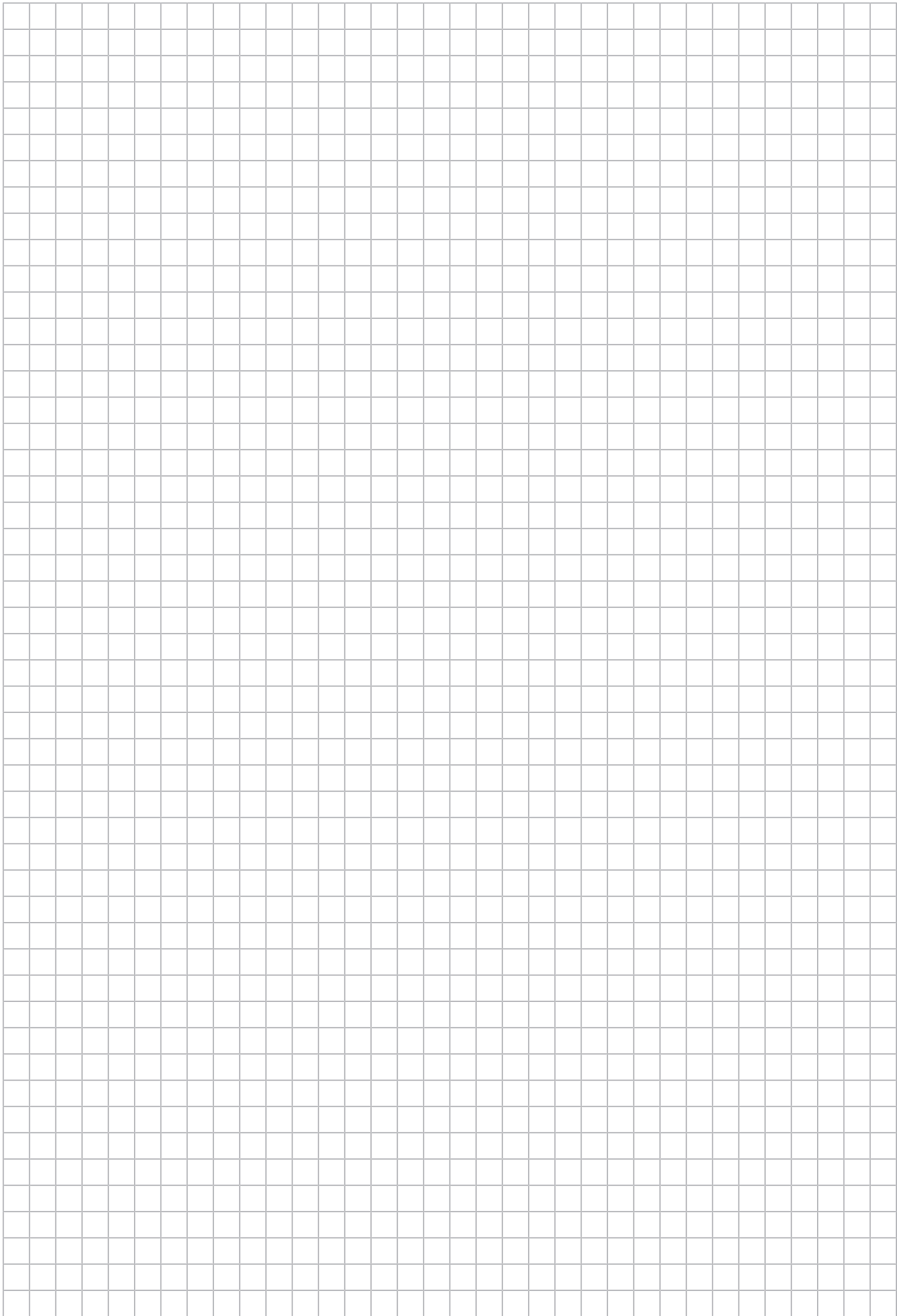
U

Use, designated	5
-----------------------	---

V

Virus scanner, installation problems	13
--	----











SEW-EURODRIVE
Driving the world

SEW
EURODRIVE

SEW-EURODRIVE GmbH & Co KG
Ernst-Blickle-Str. 42
76646 BRUCHSAL
GERMANY
Tel. +49 7251 75-0
Fax +49 7251 75-1970
sew@sew-eurodrive.com
→ www.sew-eurodrive.com