



Installation Instructions



MOVISUITE® standard Installation and Project Adjustment



Table of contents

1	General information.....	4
1.1	About this documentation	4
1.2	Content of the documentation.....	4
1.3	Right to claim under warranty	4
1.4	Product names and trademarks.....	4
1.5	Copyright notice.....	4
2	Safety notes	5
2.1	Preliminary information	5
2.2	Target group	5
2.3	Designated use	5
2.4	Network security and access protection	5
3	Introduction.....	6
3.1	Short designation in the documentation.....	6
3.2	Content of this documentation	6
4	Installation.....	7
4.1	Before updating to MOVISUITE® SP9 service pack 1	7
4.1.1	Update to MOVISUITE® SP9 service pack 1 required	7
4.1.2	No update to MOVISUITE® SP9 service pack 1 required	9
4.1.3	Integrating axis modules	9
4.2	Requirements.....	10
4.2.1	Installation requirements	10
4.2.2	Hardware requirements.....	10
4.2.3	Requirements on the operating system	10
4.3	Installing the software	11
4.3.1	Preparing the installation.....	11
4.3.2	Performing the installation.....	12
4.3.3	Installation failed	12
5	Adjusting an existing MOVISUITE® project.....	13
5.1	Importing a project into MOVISUITE® SP9 service pack 1	14
5.2	Copying axis modules with MOVIKIT® software modules	16
5.3	Updating MOVI-C® devices with identical serial numbers	18
5.4	Updating MOVI-C® devices with different serial numbers	20
5.5	Setting user units	21
5.6	Restoring configuration data of MOVIKIT® software modules	22
5.7	Updating the IEC project.....	25
5.8	Completing the update of the MOVISUITE® SP8 project	29
5.9	Incompatible constellations.....	31
6	Appendix	32
6.1	Overview of components for MOVISUITE® SP8	32
6.2	Overview of components of MOVISUITE® SP9 service pack 1	34
	Index	36

1 General information

1.1 About this documentation

The documentation is part of the product and contains important information. The documentation is for everyone who works with this product.

The documentation must be accessible and legible. Make sure that persons responsible for the system and its operation as well as persons who work independently with the software and the connected units of SEW-EURODRIVE have read through the manual carefully and understood it. If you are unclear about any of the information in this documentation or if you require further information, please contact SEW-EURODRIVE.

1.2 Content of the documentation

The descriptions in this documentation apply to the current software/firmware version at the time of publication. When new versions of software/firmware are installed, the descriptions may differ. In this case, contact SEW-EURODRIVE.

1.3 Rights to claim under warranty

A requirement of fault-free operation and fulfillment of any rights to claim under limited warranty is that you adhere to the information in the documentation at hand. Therefore, read the documentation before you start working with the software and the connected devices from SEW-EURODRIVE.

Make sure that the documentation is available to persons responsible for the machinery and its operation as well as to persons who work independently on the units. Also ensure that the documentation is legible.

1.4 Product names and trademarks

The brands and product names in this documentation are trademarks or registered trademarks of their respective titleholders.

1.5 Copyright notice

© 2018 SEW-EURODRIVE. All rights reserved. Unauthorized reproduction, modification, distribution or any other use of the whole or any part of this documentation is strictly prohibited.

2 Safety notes

2.1 Preliminary information

The following general safety notes serve the purpose of preventing injury to persons and damage to property. They primarily apply to the use of products described in this documentation. If you use additional components, also observe the relevant warning and safety notes.

2.2 Target group

Any work with the software may only be performed by a specialist with a suitable education. A specialist in this context is someone who has the following qualifications:

- Appropriate instruction
- Knowledge of this documentation and other applicable documentation.
- SEW-EURODRIVE recommends additional training for products that are operated using this software.

2.3 Designated use

The MOVISUITE® engineering software is the operating platform for all MOVI-C® hardware and software components.

2.4 Network security and access protection

A bus system makes it possible to adapt electronic drive technology components to the particulars of the machinery within wide limits. There is a risk that a change of parameters that cannot be detected externally may result in unexpected but not uncontrolled system behavior and may have a negative impact on operational safety, system availability, or data security.

Ensure that unauthorized access is prevented, especially with respect to Ethernet-based networked systems and engineering interfaces.

Use IT-specific safety standards to increase access protection to the ports. For a port overview, refer to the respective technical data of the device in use.

3 Introduction

3.1 Short designation in the documentation

The following short designations are used in this documentation:

Type designation	Short designation
MOVISUITE® standard	MOVISUITE®
MOVISUITE® version V1.2.1253.0	MOVISUITE® SP8
MOVISUITE® version V2.0.114.100	MOVISUITE® SP9 service pack 1
MOVI-C® CONTROLLER power UHX85A or MOVI-C® CONTROLLER advanced UHX45A or MOVI-C® CONTROLLER standard UHX25A	MOVI-C® CONTROLLER
MOVI-C® CONTROLLER power UHX85A	MOVI-C® CONTROLLER power UHX85A

3.2 Content of this documentation

The documentation in hand enables you to install the engineering software correctly and to adjust existing projects to the latest version of MOVISUITE®.

4 Installation

4.1 Before updating to MOVISUITE® SP9 service pack 1

INFORMATION



When you update to MOVISUITE® SP9 service pack 1, an existing IEC project can only be used with MOVI-C® CONTROLLERS that have a firmware version which is compatible with MOVISUITE® SP9 service pack 1.

INFORMATION



Changes to MOVI-C® devices may only be made with the matching MOVISUITE® version.

For an overview of versions of MOVI-C® devices for MOVISUITE® SP8 and SP9 service pack 1, refer to the "Appendix" (→ 32).

INFORMATION



If you are already using MOVISUITE® SP9, SEW-EURODRIVE recommends that you update to MOVISUITE® SP9 service pack 1. Bugs in MOVISUITE® SP9 have been eliminated in MOVISUITE® SP9 service pack 1.

4.1.1 Update to MOVISUITE® SP9 service pack 1 required

An update to MOVISUITE® SP9 service pack 1 is required in the following cases:

- You want to use MOVI-C® CONTROLLERS that have been delivered by SEW-EURODRIVE between calendar week 32 and 52, 2018. The firmware state of these devices must be taken into operation using MOVISUITE® SP9 service pack 1.
- You want to use MOVIDRIVE® modular/system with device profile CiA402.
- You want to use the decentralized MOVI-C® device MOVIGEAR® performance (DFC, DFC-CiA402 or DSI) with the MOVIKIT® software module MOVIKIT® Velocity.
- You want to use one of the following features of the new version:
 - MOVISUITE® user interface in one of the following languages: Russian, Chinese (Mandarin), Spanish or Brazilian Portuguese
 - Comparison function of drive parameters
 - Automatic replacement function of MOVI-C® CONTROLLERS
 - Explicit device identification with station alias or "EC ID" DIP switch with "Optional EtherCAT® slaves" (Optional EtherCAT®slaves might not be present when starting up the system.)
 - Adjustable EtherCAT® cycle time
 - Software platform CODESYS V3.5 SP12 Patch3 used as development environment of the IEC Editor tool
 - MOVIKIT® software modules for MOVI-C® CONTROLLERS: MOVIKIT® Robotics, MOVIKIT® MultiAxisController, MOVIKIT® MultiMotion Auxiliary Velocity, and MOVIKIT® MultiMotion Auxiliary Positioning
 - Updated CAM Editor tool

- Two different settings for configuring the axis replacement function in order to restore axis data: "Device replacement" or "parameter set difference" detection
- Breadcrumb navigation

4.1.2 No update to MOVISUITE® SP9 service pack 1 required

An update to MOVISUITE® SP9 service pack 1 is **not** mandatory in the following cases:

- None of the cases described in chapter "Update to MOVISUITE® SP9 service pack 1 required" (→ 7) apply to you.
- You use MOVI-C® CONTROLLERS that were delivered by SEW-EURODRIVE before calendar week 32, 2018.
- There are axis modules in already existing systems that have been taken into operation with a MOVISUITE® version V1.1.xxxx.x or V1.2.xxxx.x. Axis modules that were delivered by SEW-EURODRIVE after calendar week 32, 2018 can be used without having to adjust their firmware (downward compatibility). However, you can only use features for your axis modules that are supported by the firmware version of the already existing system.

4.1.3 Integrating axis modules

Axis modules can only be operated on a MOVI-C® CONTROLLER with the same firmware version. If the firmware of the axis modules is older than the MOVI-C® CONTROLLER, you will have to update the firmware of the axis modules.

For support in updating the firmware, contact SEW-EURODRIVE Service.

4.2 Requirements

4.2.1 Installation requirements

Before installing MOVISUITE®, observe the following requirements:

- You must have administrator rights for your PC.
- You can install only **one** MOVISUITE® version on your PC.

Before changing to the latest MOVISUITE® version, read the instructions in chapter "Before updating to MOVISUITE® SP9 service pack 1" (→ 7).

- If a MOVISUITE® version up to V1.1.xxxx.x is installed on your PC, uninstall it. From version V1.1.xxxx.x, the predecessor version is uninstalled automatically when installing MOVISUITE®.

4.2.2 Hardware requirements

Processor	1 GHz 32-bit processor (x86) or 64-bit processor
RAM	At least 4 GB RAM, recommended are 8 GB RAM
Hard disk	7 GB of free memory in total, 4 GB of that on the operating system hard disk for complete installation of MOVISUITE®
Graphics card	2 GB graphics memory
Resolution	The default resolution is full HD resolution. A resolution of 1280 x 800 is appropriate.

4.2.3 Requirements on the operating system

Operating system	<p>MOVISUITE® is a 32-bit application.</p> <p>The following operating system variants are permitted:</p> <ul style="list-style-type: none"> • Windows 7 at least SP1 32-bit/64-bit • Windows 8.1 32-bit/64-bit • Windows 10 32-bit/64-bit
Redistributables	<p>The following Microsoft components must also be installed:</p> <ul style="list-style-type: none"> • Microsoft Windows Installer 3.1 or higher • Microsoft.NET Framework 4.6

4.3 Installing the software

INFORMATION



The installation will only be performed if the IEC Editor version of the installation package (version V3.5.12.3) is **not** installed on your PC.

INFORMATION



If you have already installed a MOVISUITE® software on your PC and you have worked with MOVISUITE® or the IEC Editor after having started you PC last time, then start your PC again before installing a new MOVISUITE® version.

MOVISUITE® is installed in several steps:

- "Preparing the installation" (→ 11)
- "Performing the installation" (→ 12)

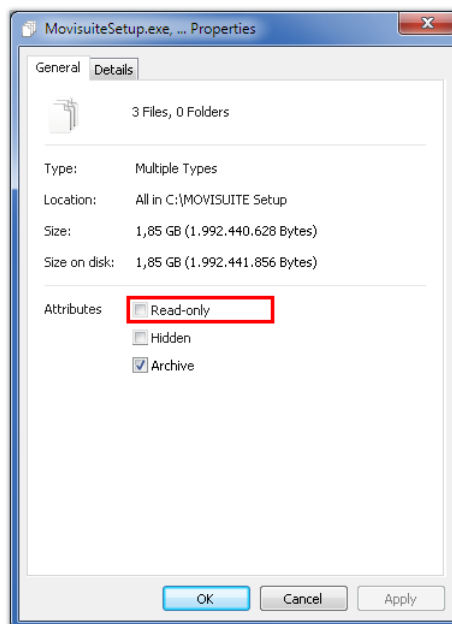
4.3.1 Preparing the installation

Proceed as follows:

1. Copy the following installation files to the hard disk of your PC:

- ⇒ movisuite.syspkg
- ⇒ MOVISUITE-Licence.txt
- ⇒ MovisuiteSetup.exe

2. If the installation files are available on a write protected medium (e.g. from a DVD), then remove the write protection from all 3 installation files. To do so, open the context menu with a right mouse-click and open the properties of the files.
3. On the "General" tab, disable the "Read only" check box.

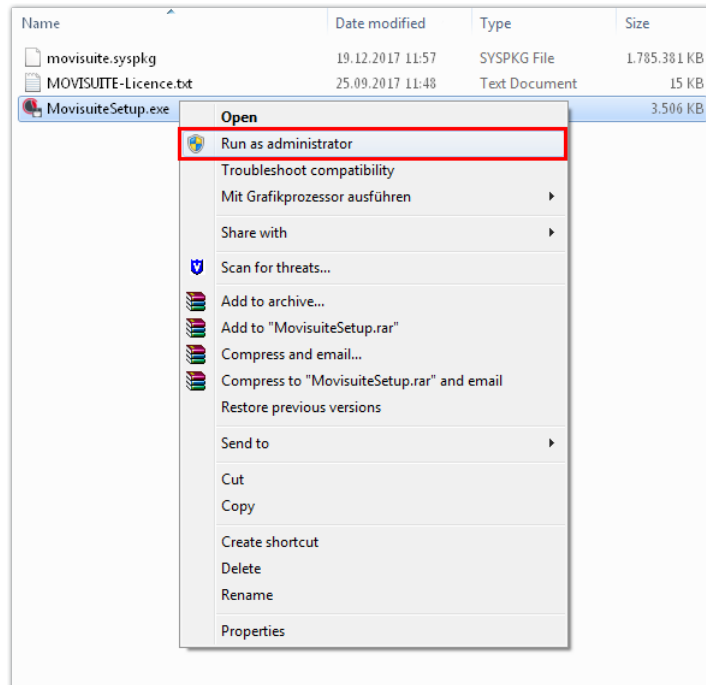


9007222764487051

4.3.2 Performing the installation

Proceed as follows:

1. Run the `MovisuiteSetup.exe` installation file with administrator rights. To do so, right-click the file to open the context menu and select [Run as administrator].



23510526475

- ⇒ The software is installed using a wizard.
2. If you are requested to reboot your PC when installing the IEC Editor, it is important that you follow this instruction.

INFORMATION



If you do not reboot your PC, an error will occur when installing the IEC packages. This error can only be eliminated by restarting the PC and installing MOVISUITE® again.

⇒ After PC reboot, the wizard continues installing MOVISUITE®.

4.3.3 Installation failed

In rare cases, virus scanners or firewalls can cause problems when installing MOVISUITE®. In this case, refer to the log files of the virus scanner or the firewall for information on possible problems.

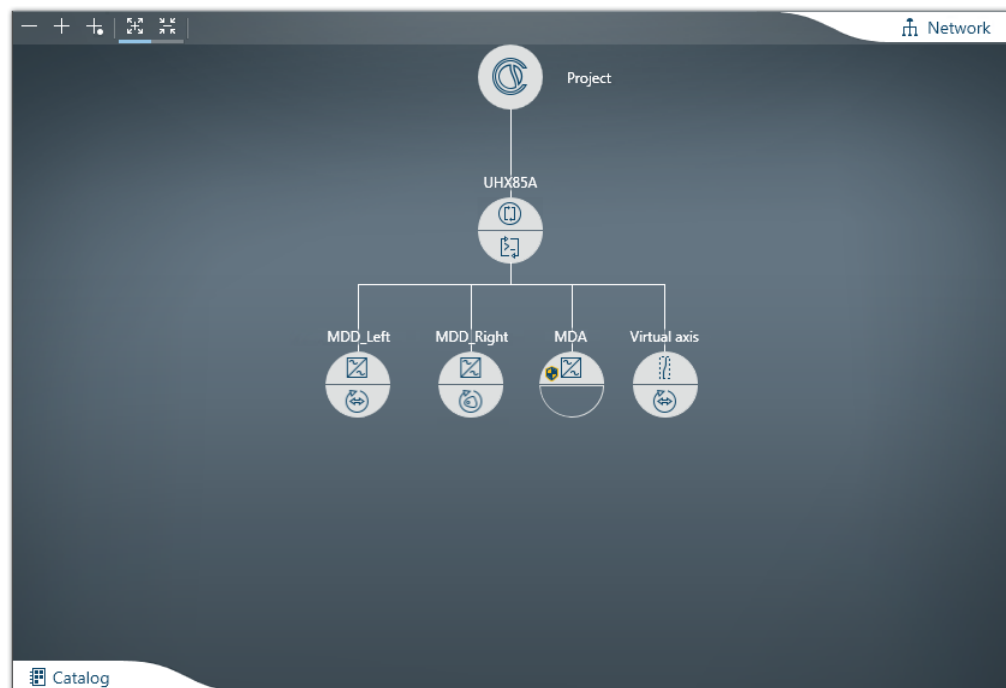
5 Adjusting an existing MOVISUITE® project

How to convert an existing MOVISUITE® SP8 project to a project in MOVISUITE® SP9 service pack 1 is described in more detail by way of an example. The following device topology is used in the example:

- MOVI-C® CONTROLLER power UHX85A
- MOVIDRIVE® modular application inverter, MDD90A double-axis module with a MOVIKIT® software module assigned each.
- MOVIDRIVE® modular application inverter, MDA90A single-axis module with MOVISAFE® CSB21A safety card
- Virtual axis with assigned MOVIKIT® software module

An IEC project already exists.

The following figure shows the device topology in MOVISUITE®.

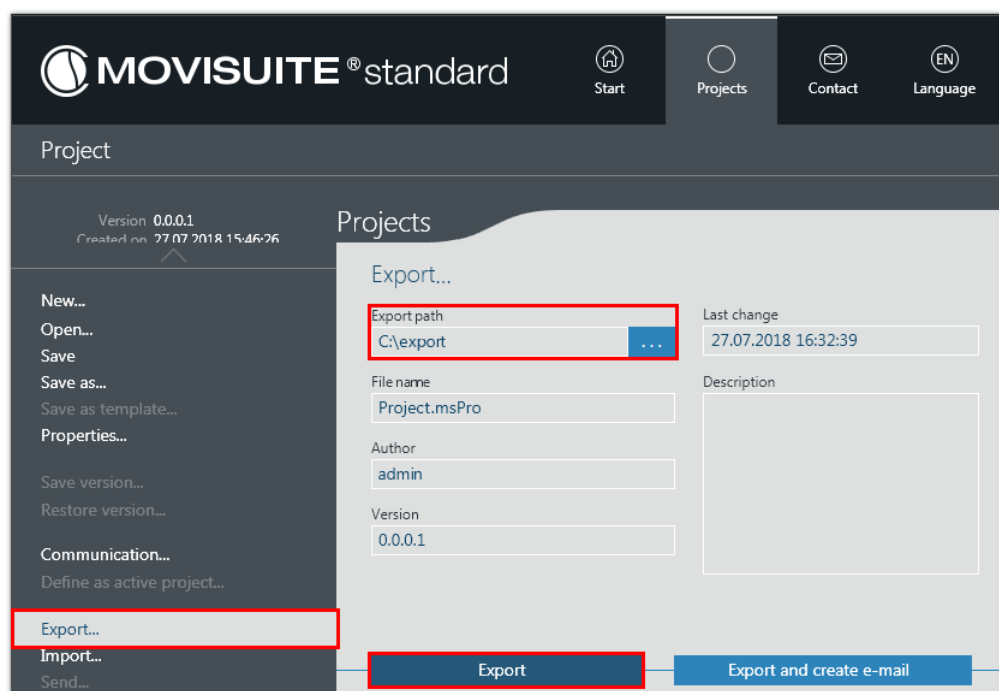


25255879947

5.1 Importing a project into MOVISUITE® SP9 service pack 1

Proceed as follows:

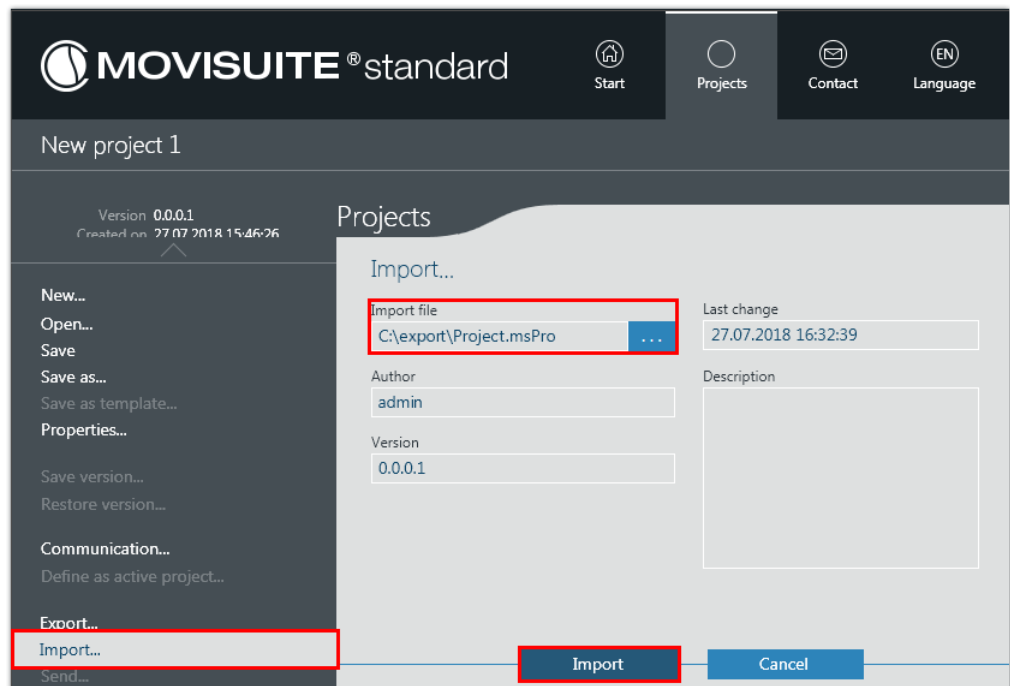
- ✓ The firmware of MOVISUITE® SP9 service pack 1 is installed on the MOVI-C® CONTROLLER power UHX85A and on the lower-level axis modules. For an overview of versions of MOVI-C® devices for the two MOVISUITE® versions, refer to the "Appendix" (→ 32). To update the device firmware, contact SEW-EURODRIVE Service.
1. Open MOVISUITE® SP8.
 2. Open the projects to be converted to MOVISUITE® SP9 service pack 1 one after the other, and export them.



25263748235

3. Check to see that all relevant MOVISUITE® projects have been exported.
4. Install MOVISUITE® SP9 service pack 1 on the engineering PC.
 - ⇒ MOVISUITE® SP8 will then be uninstalled automatically.

5. Open MOVISUITE® SP9 service pack 1.
6. Import the previously exported MOVISUITE® SP8 project into MOVISUITE® SP9 service pack 1.



9007224518543371

5.2 Copying axis modules with MOVIKIT® software modules

To restore the configuration data of the MOVIKIT® software modules, you have to create a copy of all real axis modules that have assigned a MOVIKIT® software module. Virtual axes are not affected by this process.

Proceed as follows:

- ✓ You have imported the MOVISUITE® SP8 project into MOVISUITE® SP9 service pack 1.
- 1. Go to the "Startup" work phase.
- 2. Right-click to open the context menu of the project and add a structure node.
 - ⇒ The structure node is used as a buffer for the configuration data of the MOVIKIT® software modules.



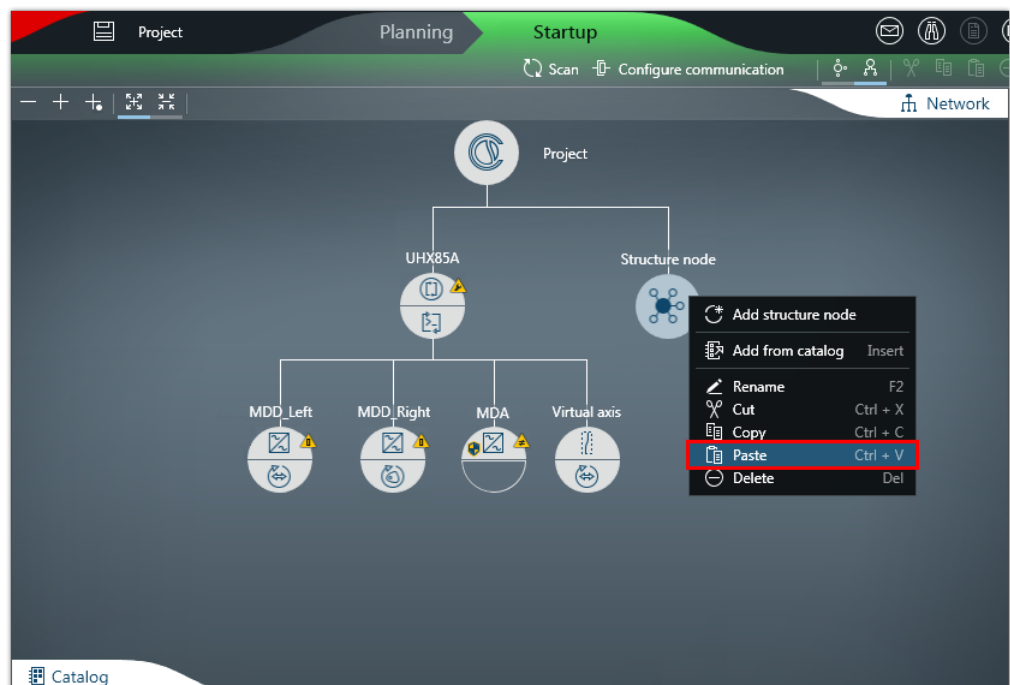
25266585227

3. Insert a copy of all real axis modules that have assigned a MOVIKIT® software module under the structure node. To do so, hold down the <CTRL> key and click to select all affected axis modules. Open the context menu with a right mouse click and copy the axis modules.



25295239563

4. Next, right-click to open the context menu of the structure node and insert the copy of the axis modules.



25300521483

- ⇒ In the example, the copies of the double-axis modules were added under the structure node.



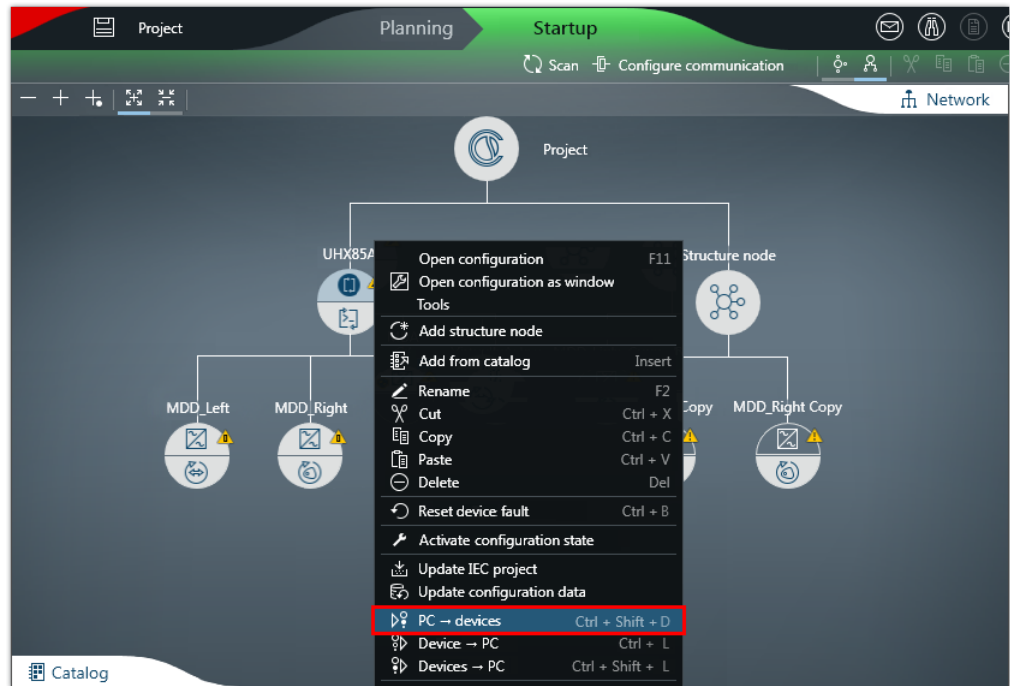
25269271179

5.3 Updating MOVI-C® devices with identical serial numbers

If you use exactly the same MOVI-C® devices with identical serial numbers in a MOVISUITE® SP9 service pack 1 project (which means you have updated the firmware of the devices), then you can transfer the saved data sets directly to the MOVI-C® CONTROLLER and the lower-level axis modules.

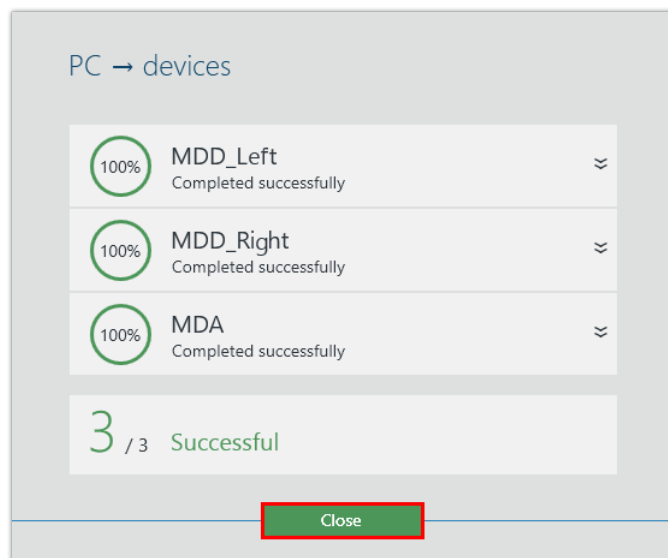
Proceed as follows:

1. Right-click to open the context menu of the MOVI-C® CONTROLLER power UHX85A and transfer the data sets from the PC to the device.



25337261579

2. Confirm the safety prompt for data transfer.
 - ⇒ Successful transfer will be indicated by a notification.



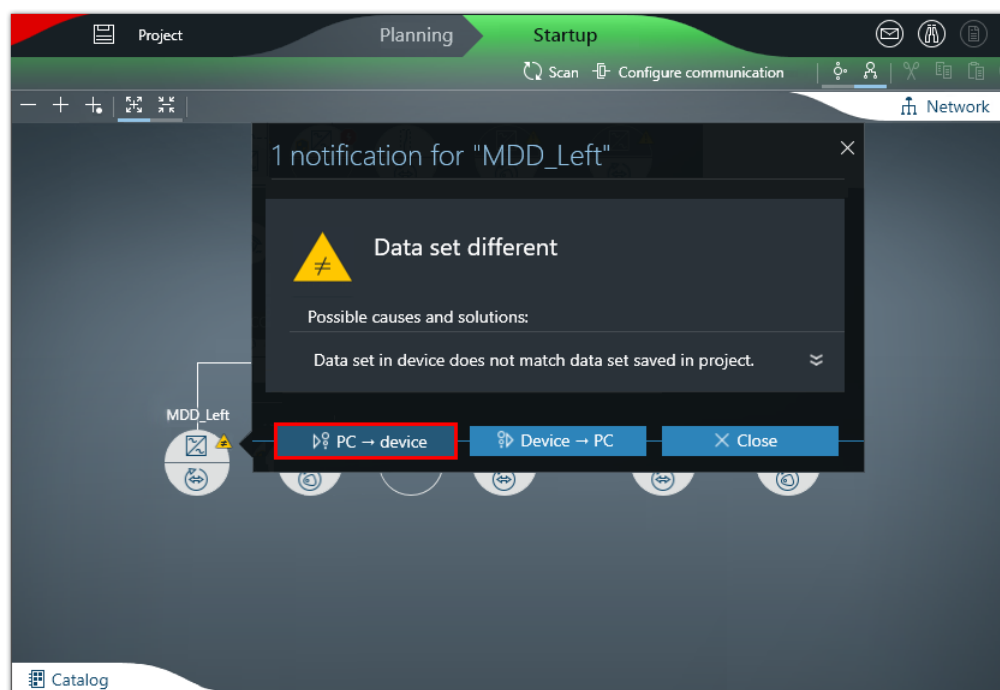
9007224592008331

5.4 Updating MOVI-C® devices with different serial numbers

If you use MOVI-C® devices of the same design but not exactly the same motors in a MOVISUITE® SP9 service pack 1 project (for example new devices of the same design), then you have to transfer the saved data sets individually to each MOVI-C® device.

Proceed as follows:

1. Click on the notification symbol for each MOVI-C® device.
 - ⇒ A notification window is displayed with device-specific error messages.
2. Click the error message "Device replacement detected".
3. Transfer the data sets from the PC to the device.



9007224592013835

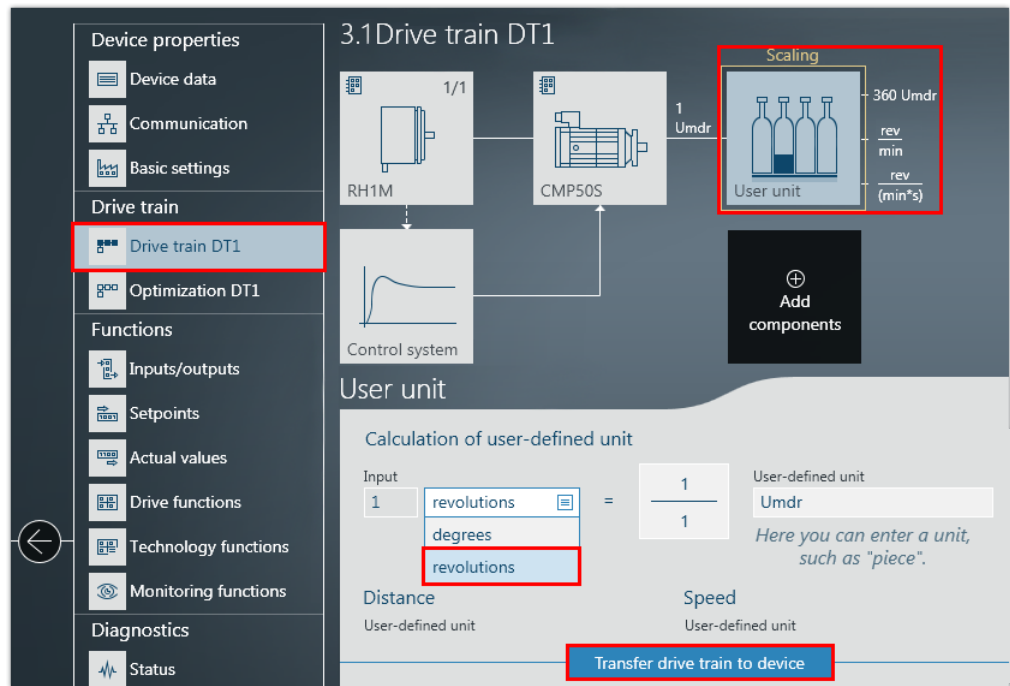
4. Confirm the safety prompt for data transfer.
5. Repeat this process for all MOVI-C® devices (all MOVI-C® CONTROLLERS and all axis modules). None of the MOVI-C® devices may report the fault "Device replacement detected".

5.5 Setting user units

The user units for axis modules with assigned MOVIKIT® software modules or drive trains with user units in the MOVISUITE® SP9 service pack 1 project must be the same as those in the MOVISUITE® SP8 project.

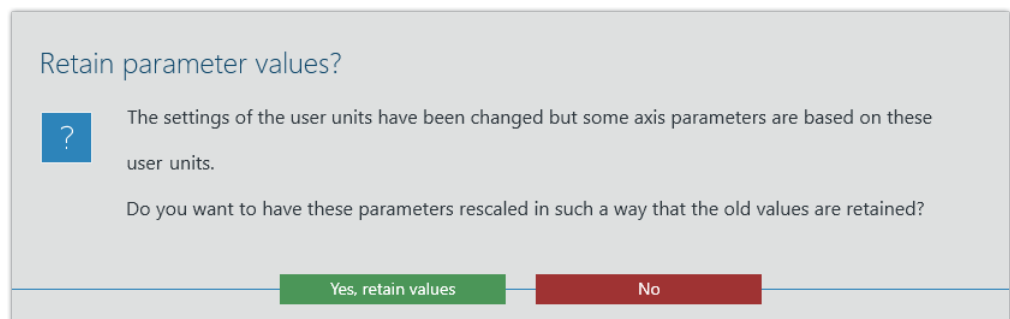
Proceed as follows:

- ✓ You have transferred the data sets from the MOVISUITE® SP8 project to the MOVI-C® devices.
- 1. Open the configuration of the respective axis module and the set the user unit.



9007224595385995

- ⇒ In the example, the user unit "revolutions" is used as it is already used in the MOVISUITE® SP8 project.
- 2. Click the "Transfer drive train to device" button.
- 3. Keep or discard the parameter values of the parameters based on the user units as required.



9007224607524235

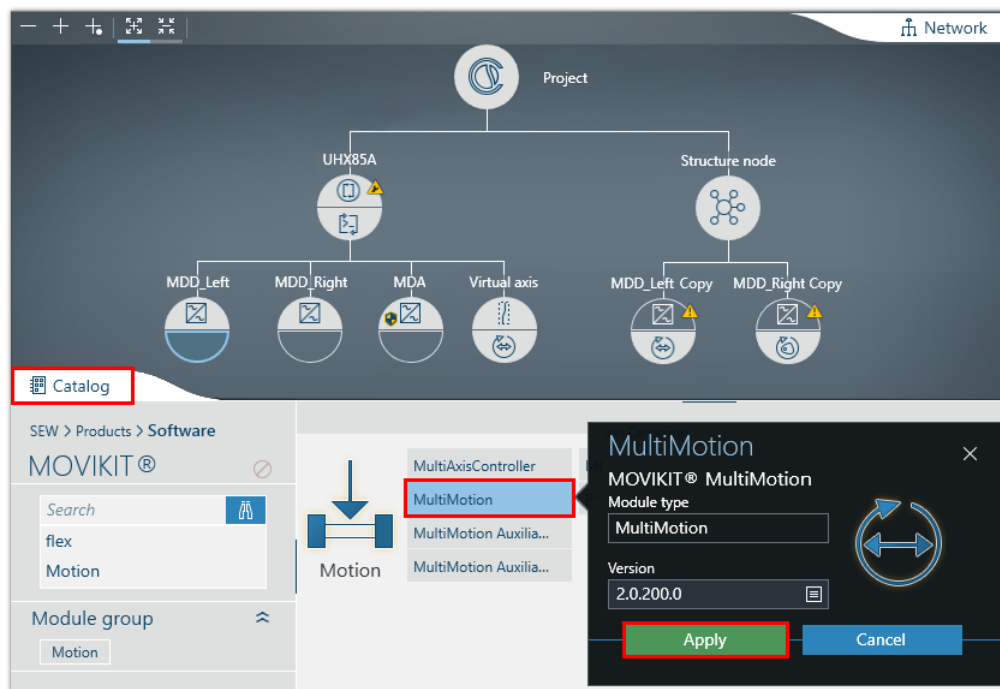
- 4. Repeat the process for each affected axis module.

5.6 Restoring configuration data of MOVIKIT® software modules

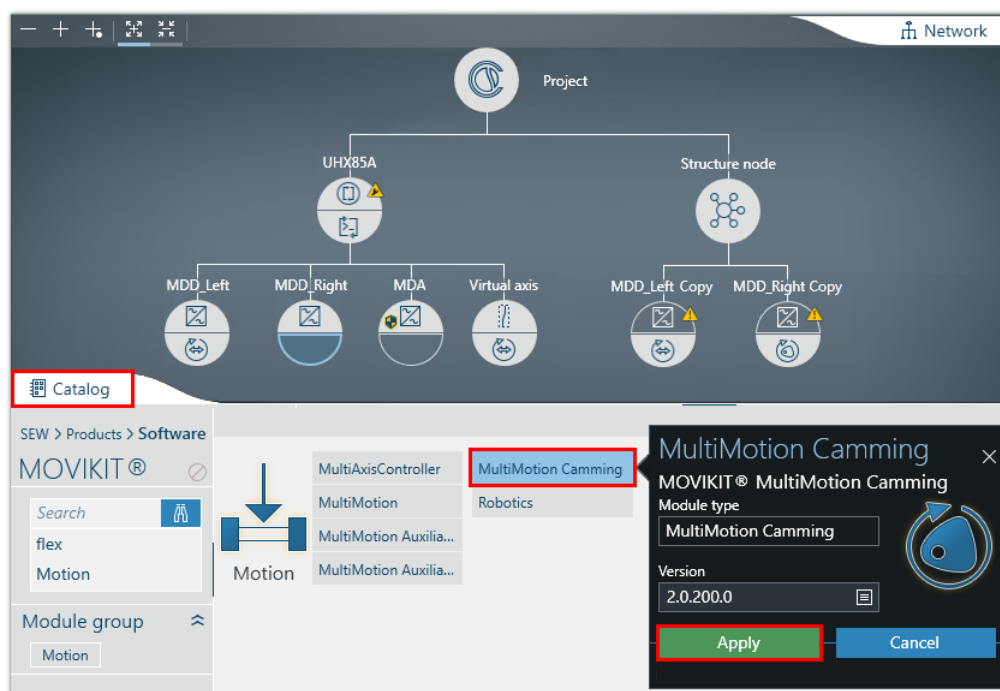
MOVIKIT® software modules must be assigned again to the real axis modules. Next, the configuration data have to be transferred from the MOVISUITE® SP8 project.

Proceed as follows:

- ✓ You have inserted a copy of the real axis module with an assigned MOVIKIT® software module into the MOVISUITE® SP9 service pack 1 project.
1. Add the required MOVIKIT® software modules from the catalog and insert them into the real axis modules in the MOVISUITE® SP9 service pack 1 project.



25345187467



25345192203

28505875/EN – 10/2018

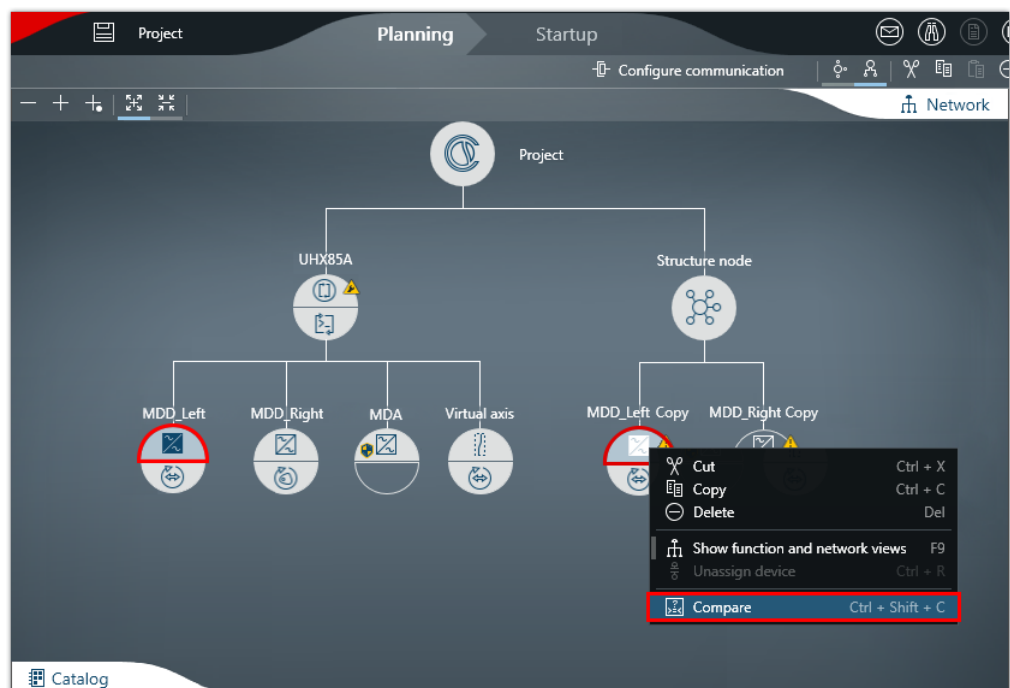
- ⇒ In the example, the MOVIKIT® MultiMotion software module is assigned to the one axis module, and the MOVIKIT® MultiMotion Camming software module to the other axis module.

INFORMATION



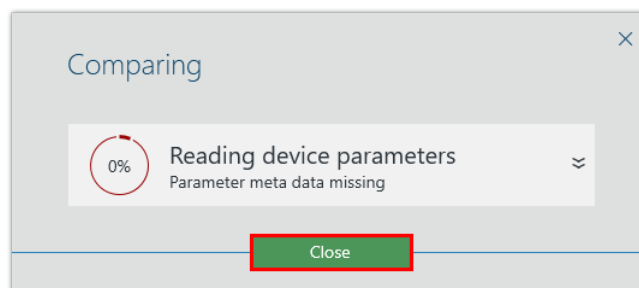
If an error is reported when inserting the MOVIKIT® software module, then the user unit set for the axis module is not correct (see "Setting user units" (→ 21)).

2. Save the project.
3. Switch to the "Planning" work phase.
4. Keep the <CTRL> pressed down and select a real axis module and the corresponding copied axis module. Right-click to open the context menu of the axis modules and start a parameter set comparison.



25346606091

5. Close the error message that might occur to indicate that parameter meta data are missing. You can ignore this error message.



9007224607518987

- ⇒ A comparison table with the different parameter sets opens in the configuration.

INFORMATION



The following parameter sets of MOVIKIT® software modules may be taken over from one axis module to the other axis module: "Controller functions" and "Additional functions".

Other parameter sets may not be taken over.

- In the first row of the comparison table, right-click to open the context menu of the copied axis module and apply the column values to the real axis module.

Name	MDD_Left	MDD_LeftCopy
Selection of the master source		<div> <div>Apply data set for...</div> <div>Apply subtree for...</div> </div>
Value		
Master source	User program	Configured axis
Master axis name	No master	MDD_Right
Gear ratio		
Value		
Numerator	1	11
Denominator	1	22

9007224601355787

- ⇒ In the example, only the parameter sets of the "Controller functions" are different in the two axis modules.
- Confirm the message stating that the parameter sets have been successfully transferred.
 - ⇒ The configuration data of the MOVIKIT® software module have now been transferred to the real axis module.
 - Repeat the copy operation for each real/copied axis module pair with assigned MOVIKIT® software module.
 - Save the project.

5.7 Updating the IEC project

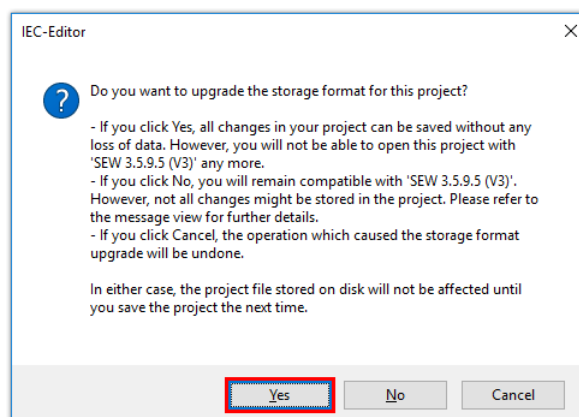
Proceed as follows:

1. Go to the "Startup" work phase.
2. Right-click to open the context menu of MOVI-C® CONTROLLER power UHX85A and startup updating the IEC project.



25300516619

3. Confirm the message about configuration data download and the message about errors loading the libraries in the project.
4. On the message indicating the compiler version used, click [Cancel]. The current compiler version can be maintained because conversion to the latest compiler version is performed automatically when compiling the IEC program.
5. Confirm the message about memory format update of the project.



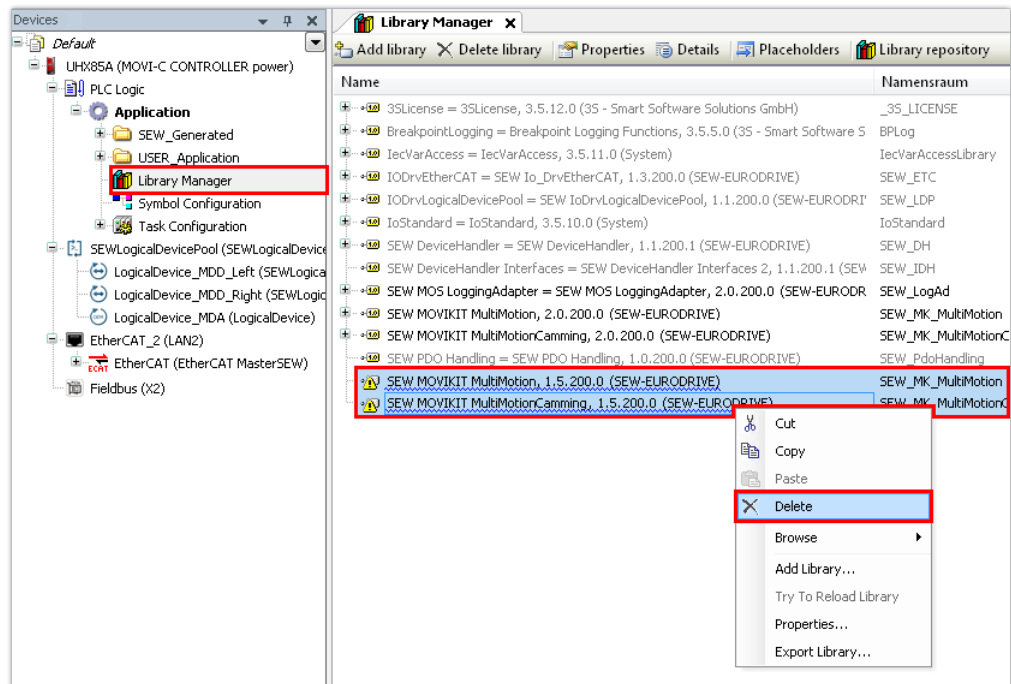
9007224595393163

- ⇒ The IEC Editor project is now being updated. The device topology is shown in the device tree.

5 Adjusting an existing MOVISUITE® project

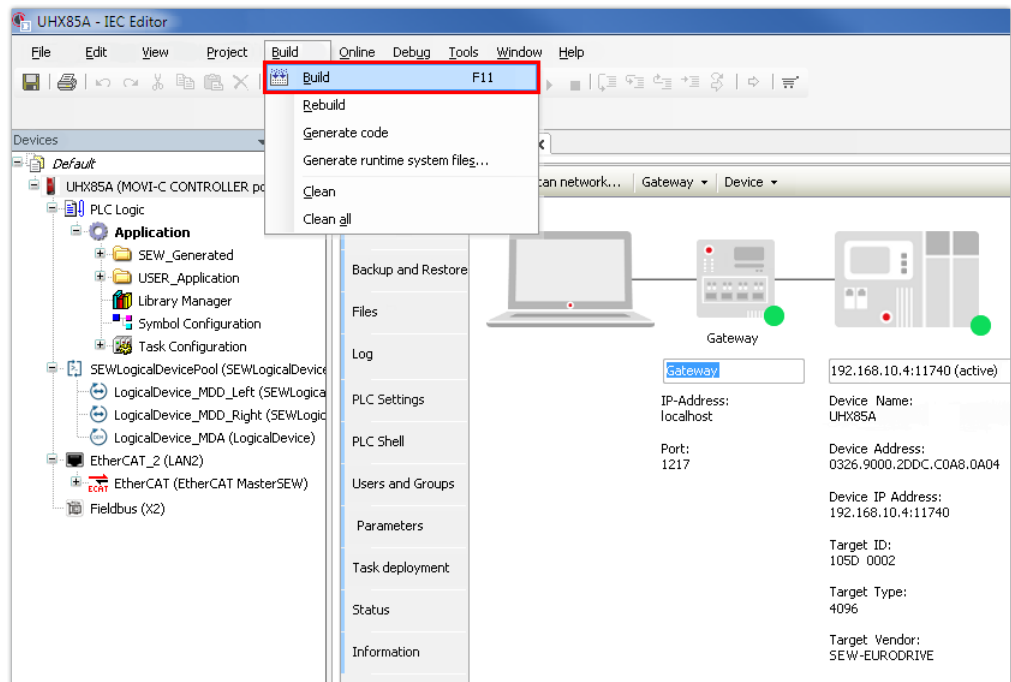
Updating the IEC project

6. In the device tree, double-click the library manager and delete old libraries. Old libraries are underscored in blue and have a warning symbol.



25300509835

7. Compile the IEC program into the machine code of the MOVI-C® CONTROLLER power UHX85A.



25276676363

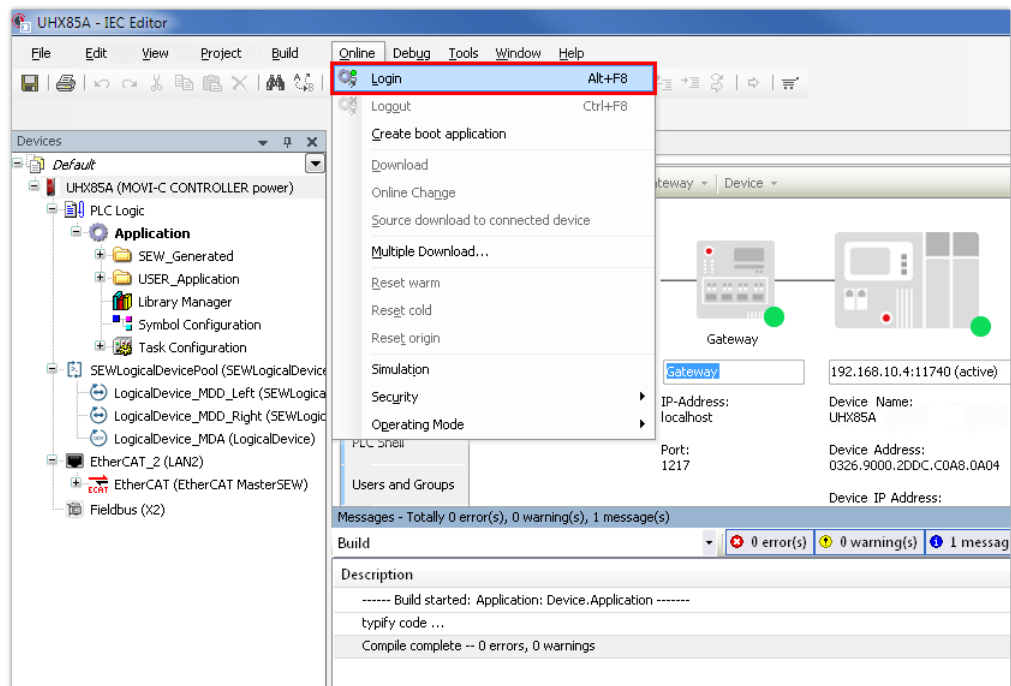
INFORMATION



If errors are reported while compiling the IEC program (e.g. because of new variable names or object names of MOVISUITE® SP9 service pack 1), contact SEW-EURODRIVE Service.

28505875/EN – 10/2018

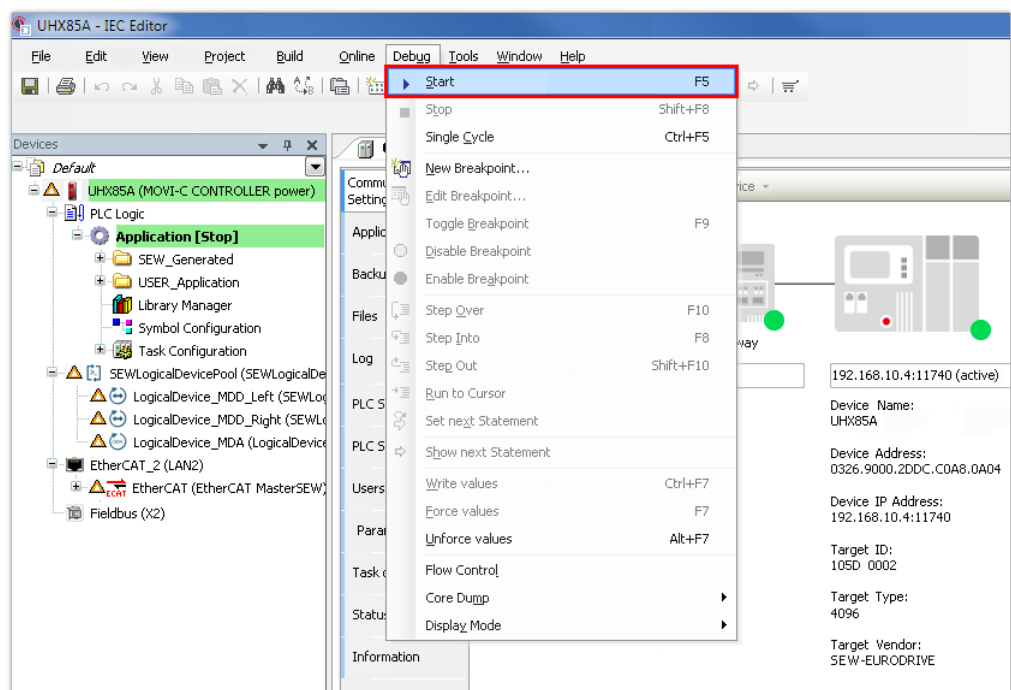
8. After successful compilation of the IEC program, the program can be transferred to the MOVI-C® CONTROLLER power UHX85A. For this purpose, log on to the network.



25276682763

⇒ A message is displayed that the IEC program (application) from the IEC Editor program has been created and loaded to the MOVI-C® CONTROLLER power UHX85A.

9. Confirm the message.
10. Start the IEC program.

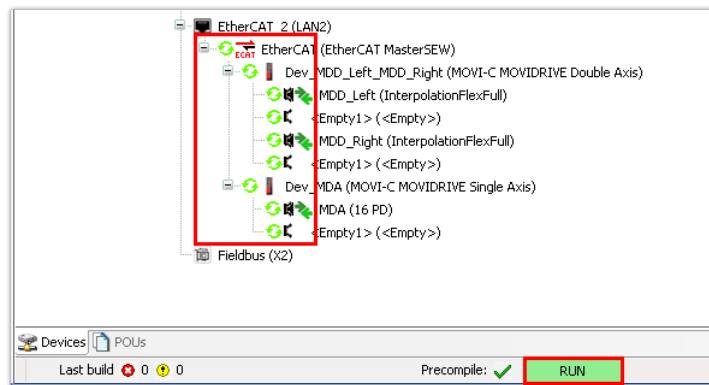


25276687627

5 Adjusting an existing MOVISUITE® project

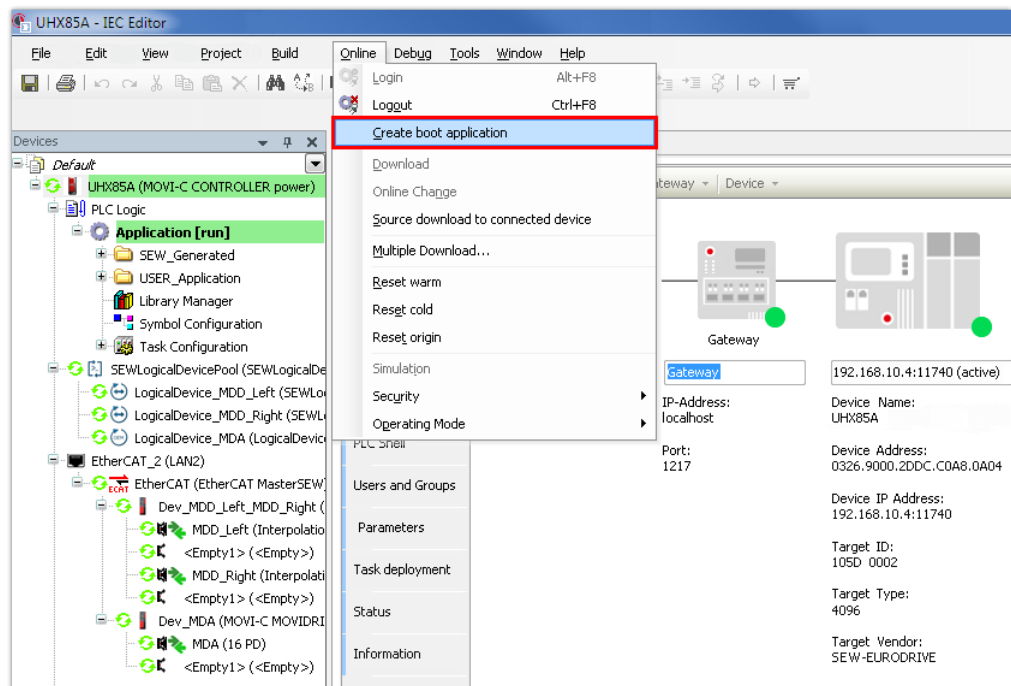
Updating the IEC project

- ⇒ The MOVI-C® CONTROLLER starts. The message "RUN" is displayed in the status bar of the IEC editor. The devices in the device tree are marked by a green circle.



25282183691

11. Create a boot project. This way, the IEC Editor project is saved on the CFast memory card of the MOVI-C® CONTROLLER power UHX85A and is still available after restart of the MOVI-C® CONTROLLER power UHX85A.



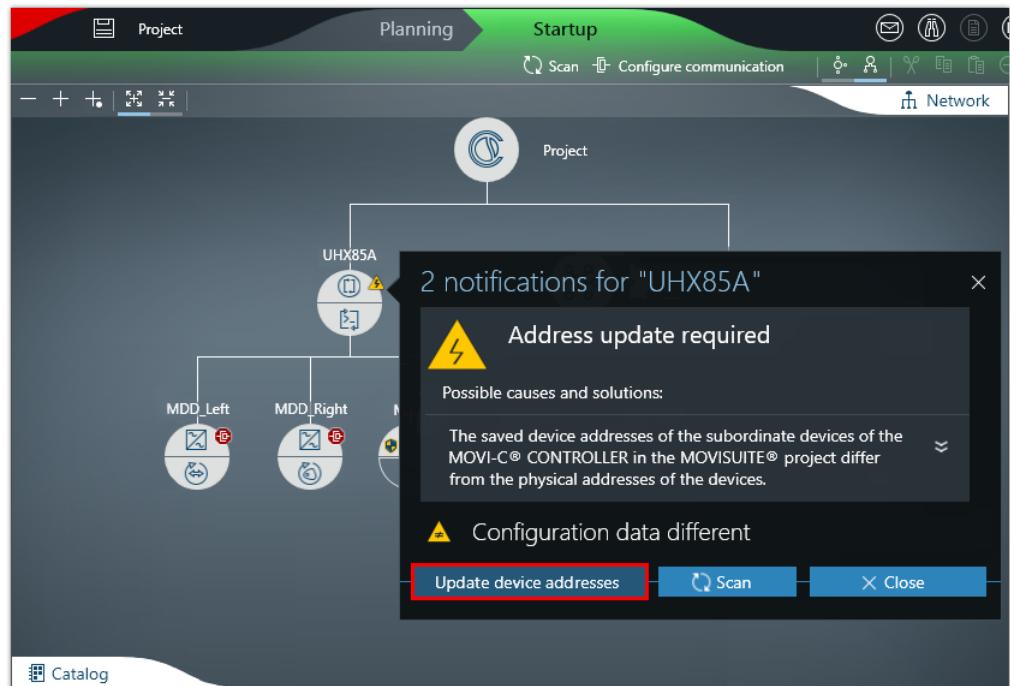
25292740619

12. Close the IEC Editor.

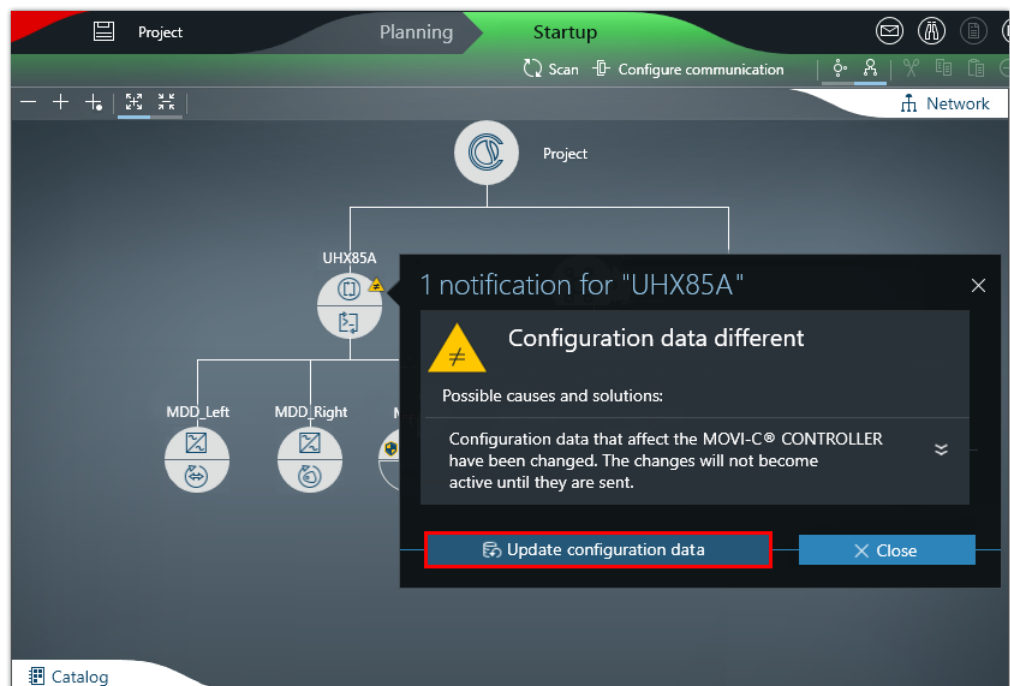
5.8 Completing the update of the MOVISUITE® SP8 project

Proceed as follows:

- ✓ You have restored the configuration data of the MOVIKIT® software modules and updated the IEC project.
- 1. Update the device address and the configuration data of MOVI-C® CONTROLLER power UHX85A. To do so, open the notification widow of the error message of the MOVI-C® CONTROLLER power UHX85A and perform the updates one after the other.



9007224613221131



9007224652561931

5 Adjusting an existing MOVISUITE® project

Completing the update of the MOVISUITE® SP8 project

2. Confirm the message about successful download of the configuration files.
3. When the temporarily stored parameter sets of the MOVIKIT® software modules is no longer required, you can delete the structure node from the MOVISUITE® SP9 service pack 1 project. To do so, right-click the structure node to open the context menu and choose the "Delete" function.



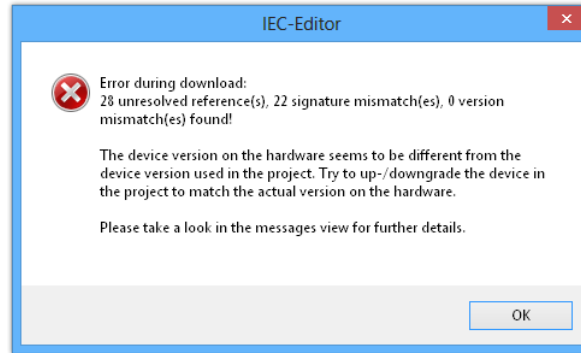
25397827339

4. Save the project in MOVISUITE® SP9 service pack 1.

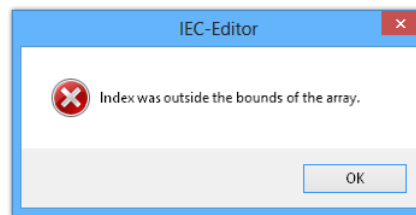
5.9 Incompatible constellations

A connection with the MOVI-C® CONTROLLER can only be established successfully in the IEC Editor when the firmware of the MOVI-C® CONTROLLER and the version of the MOVISUITE® in use match.

If you attempt, for example, to use an IEC project created with MOVISUITE® SP8 with a MOVI-C® CONTROLLER power UHX85A with firmware version 3.00, then the following error messages appear when trying to establish a connection:



23541613451



23541618571

MOVISUITE® SP9 service pack 1 would be compatible with MOVI-C® CONTROLLER power UHX85A with firmware version 3.00 (see "Appendix" (→ 32)).

You can rectify this error by converting the IEC project to MOVISUITE® SP9 service pack 1 (see chapter "Adjusting an existing MOVISUITE® project" (→ 13)).

6 Appendix

6.1 Overview of components for MOVISUITE® SP8

Software component		Version	
IEC Editor		3.5 SP9 patch 5	
SEW profile (IEC)		SEW 3.5.9.50 (V3)	
MOVIKIT® software modules:			
MOVIKIT® MultiMotion		1.5.200.0	
MOVIKIT® MultiMotion Camming		1.5.200.0	
IEC Editor libraries:			
SEW IoDrvEtherCAT library		1.1.200.0	
SEW IoDrvLogicalDevicePool library		1.0.200.0	
SEW Common Fieldbus Slave Extern library		1.2.200.0	
SEW DeviceHandler Library		1.0.202.0	
SEW DeviceHandler Interfaces Library		1.0.100.7	
SEW PDO Handling Library		1.0.200.0	

MOVI-C® devices	Part number	Version	Release
MOVI-C® CONTROLLER power UHX85A	System package: 18261531	02.01	System package: 2017121400
	HAL package: 18261523		HAL package: 2017120700
	OS package: 18261515		OS package: 2017101200
MOVI-C® CONTROLLER advanced UHX45A	System package: 18261353	01.00	System package: 2017110800
	HAL package: 18261345		HAL package: 2017110800
	OS package: 18261337		OS package: 2017110800
MOVI-C® CONTROLLER standard UHX25A	System package: 18261264	01.00	System package: 2017110800
	HAL package: 18261256		HAL package: 2017110800
	OS package: 18261248		OS package: 2017110800
MOVIDRIVE® modular single-axis module MDA	18259774	02.10	201712183
MOVIDRIVE® modular double-axis module MDD	18259804	02.10	201712183
MOVIDRIVE® system MDX	18259731	02.10	201712183
MOVISAFE® safety card CSS21A	18260209	01.05	2017121303
MOVISAFE® safety card CSB21A	18260209	01.05	2017121303
MOVISAFE® safety card CSS31A	18260209	01.05	2017121303

MOVI-C® devices	Part number	Version	Release
MOVISAFE® safety card CSB31A	18260209	01.05	2017121303

6.2 Overview of components of MOVISUITE® SP9 service pack 1

Software component	Version
IEC Editor	3.5 SP12 Patch 3
SEW profile (IEC)	SEW 3.5.12.3 (V5)
MOVIKIT® software modules:	
MOVIKIT® Velocity Drive	1.1.200.1
MOVIKIT® MultiMotion	2.0.200.0
MOVIKIT® MultiMotion Camming	2.0.200.0
MOVIKIT® Robotics	2.0.200.0
MOVIKIT® MultiAxisController	2.0.200.0
MOVIKIT® MultiMotion Auxiliary Velocity	1.0.200.0
MOVIKIT® MultiMotion Auxiliary Positioning	1.0.200.0
MOVIRUN® flexible	1.0.200.0
IEC Editor libraries:	
SEW IoDrvEtherCAT library	1.3.200.0
SEW IoDrvLogicalDevicePool library	1.1.200.0
SEW Common Fieldbus Slave Extern library	1.3.200.0
SEW DeviceHandler Library	1.1.200.1
SEW DeviceHandler Interfaces Library	1.1.200.1
SEW DeviceHandler Interfaces 2 Library	1.1.200.1
SEW PDO Handling Library	1.0.200.0

MOVI-C® devices	Part number	Version	Release
MOVI-C® CONTROLLER power UHX85A	System package: 18261531 HAL package: 18261523 OS package: 18261515	03.00	System package: 2018070900 HAL package: 2018052300 OS package: 2018052300
MOVI-C® CONTROLLER progressive UHX65A	System package: 18263941 HAL package: 18263933 OS package: 18263925	02.00	System package: 2018070900 HAL package: 2018052300 OS package: 2018052300
MOVI-C® CONTROLLER advanced UHX45A	System package: 18261353 HAL package: 18261345 OS package: 18261337	02.00	System package: 2018071900 HAL package: 2018071900 OS package: 2018071900
MOVI-C® CONTROLLER standard UHX25A	System package: 18261264 HAL package: 18261256 OS package: 18261248	02.00	System package: 2018071900 HAL package: 2018071900 OS package: 2018071900

MOVI-C® devices	Part number	Version	Release
MOVIDRIVE® modular MDA single-axis module	18259774	03.00	201807201
MOVIDRIVE® modular MDA-CiA402 single-axis module	18266320	03.00	201807201
MOVIDRIVE® modular MDD double-axis module	18259804	03.00	201807201
MOVIDRIVE® modular MDD-CiA402 double-axis module	18266304	03.00	201807201
MOVIDRIVE® system MDX	18259731	03.00	201807201
MOVIDRIVE® system MDX-CiA402	18267572	03.00	201807201
MOVI-C® decentralized electronics DFC	18269958	03.10	201809203
MOVI-C® decentralized electronics DFC-CiA402	18269982	03.10	201809203
MOVI-C® decentralized electronics DSI	18269958	03.10	201809203
MOVISAFE® CSS21A safety card	18260209	01.05	2017121303
MOVISAFE® CSB21A safety card	18260209	01.05	2017121303
MOVISAFE® CSS31A safety card	18260209	01.05	2017121303
MOVISAFE® CSB31A safety card	18260209	01.05	2017121303

Index

A

Administrator rights	12
Axis module	
Comparing parameter sets	22
Firmware update required	7
Setting user units	21
Store temporarily in structure node	16
Transferring data sets to the device	18, 20
Updating device address	29

C

Content of the documentation	6
Copyright notice	4

D

Data sets	
Transfer from devices with different serial numbers	20
Transfer from devices with identical serial numbers	18
Device replacement detected	20

E

Error messages indicating incompatible constellations	31
Example project, adjustment to MOVISUITE® SP9 service pack 1	13

F

Firewall, installation problems	12
---------------------------------------	----

H

Hardware requirements	10
-----------------------------	----

I

IEC project	
Error messages	31
Incompatible constellations	31
Update	25
Importing a MOVISUITE® SP8 project into MOVISUITE® SP9 service pack 1	
Export	14
Install	
As administrator	12
Failed	12
IEC Editor	12

Installation files	11
Installation requirements	10
Administrator rights	10
Hardware requirements	10
Requirements on the operating system	10
Installing the IEC Editor	12

L

Liability	4
Liability for defects	4

M

MOVI-C® CONTROLLER	
Incompatible constellations	31
Transferring data sets from the project	18, 20
Update configuration data	29
MOVI-C® device	
Update with different serial numbers	20
Update with identical serial numbers	18
MOVIKIT® software module	
Add from catalog	22
Copying axis module	16
Storing axis module temporarily in structure node	16
Transferring configuration data	22
MOVISUITE® SP8	
Associated MOVI-C® devices	32
Export project	14
Importing a project into MOVISUITE® SP9 service pack 1	14
No project update required	7
Project update required	7
Software components	32
MOVISUITE® version V1.2.1253.0	
Associated MOVI-C® devices	32
Software components	32
MOVISUITE® version V2.0.114.100	
Associated MOVI-C® devices	34
Software components	34
MOVISUITE® SP8 project	14
Completing update	29
Transferring data sets to the device	18, 20
MOVISUITE® SP9 service pack 1	
Adjusting an existing MOVISUITE® SP8 project	13

Associated MOVI-C® devices	34	Preliminary information.....	5
Importing a MOVISUITE® SP8 project	14	Setting user units.....	21
Incompatible constellations	31	Short designation in the documentation	6
Software components.....	34	Structure node	
MOVISUITE®, number of installed versions	10	Delete	29
P		Insert	16
Product names	4	T	
R		Trademarks	4
Requirements on the operating system.....	10	V	
S		Virus scanner, installation problems.....	12
Safety notes			
Bus systems	5		







SEW-EURODRIVE
Driving the world

SEW
EURODRIVE

SEW-EURODRIVE GmbH & Co KG
Ernst-Blickle-Str. 42
76646 BRUCHSAL
GERMANY
Tel. +49 7251 75-0
Fax +49 7251 75-1970
sew@sew-eurodrive.com
→ www.sew-eurodrive.com