



Installation Instructions



MOVISUITE® standard Installation and Project Adjustment



Table of contents

1	General information.....	4
1.1	About this documentation	4
1.2	Content of the documentation.....	4
1.3	Right to claim under warranty	4
1.4	Product names and trademarks.....	4
1.5	Copyright notice.....	4
2	Safety notes	5
2.1	Preliminary information	5
2.2	Target group	5
2.3	Designated use	5
2.4	Bus systems.....	5
3	Introduction.....	6
3.1	Short designation in the documentation.....	6
3.2	Content of this documentation	6
4	Installation.....	7
4.1	Before updating to MOVISUITE® version V1.2.1253.0	7
4.1.1	Update to MOVISUITE® version V1.2.1253.0 required	7
4.1.2	No update to MOVISUITE® version V1.2.1253.0 required	8
4.1.3	Integrating axis modules	8
4.2	Requirements.....	9
4.2.1	Installation requirements	9
4.2.2	Hardware requirements.....	9
4.2.3	Requirements on the operating system	9
4.3	Installing the software	10
4.3.1	Preparing the installation.....	10
4.3.2	Performing the installation.....	11
4.3.3	Installation failed	11
5	Adjusting an existing MOVISUITE® project.....	12
5.1	Displaying the firmware of a MOVI-C® CONTROLLER power UHX85A	12
5.2	Converting an IEC project into MOVISUITE® version V1.2.1253.0	13
5.2.1	Converting an IEC project automatically	14
5.2.2	Converting an IEC project manually.....	17
5.3	Opening the IEC project.....	22
5.4	Incompatible constellations.....	24
6	Appendix	25
6.1	Overview of components of MOVISUITE® version V1.1.1180.0	25
6.2	Overview of components of MOVISUITE® version V1.2.1253.0	26
	Index	27

1 General information

1.1 About this documentation

The documentation is part of the product and contains important information. The documentation is for everyone who works with this product.

The documentation must be accessible and legible. Make sure that persons responsible for the system and its operation as well as persons who work independently with the software and the connected units of SEW-EURODRIVE have read through the manual carefully and understood it. If you are unclear about any of the information in this documentation or if you require further information, please contact SEW-EURODRIVE.

1.2 Content of the documentation

The descriptions in this documentation apply to the current software/firmware at the time of printing. When new versions of software/firmware are installed, the descriptions may differ. In this case, contact SEW-EURODRIVE.

1.3 Right to claim under warranty

A requirement of fault-free operation and fulfillment of any rights to claim under limited warranty is that you adhere to the information in the documentation at hand. Therefore, read the documentation before you start working with the software and the connected devices from SEW-EURODRIVE.

Make sure that the documentation is available to persons responsible for the machinery and its operation as well as to persons who work independently on the devices. You must also ensure that the documentation is legible.

1.4 Product names and trademarks

The brands and product names in this documentation are trademarks or registered trademarks of their respective titleholders.

1.5 Copyright notice

© 2018 SEW-EURODRIVE. All rights reserved. Unauthorized reproduction, modification, distribution or any other use of the whole or any part of this documentation is strictly prohibited.

2 Safety notes

2.1 Preliminary information

The following general safety notes have the purpose to avoid injury and damage to property. They primarily apply to the use of products described in this documentation. If you use additional components also observe the relevant warning and safety notes.

2.2 Target group

Any work with the software may only be performed by a specialist with a suitable education. A specialist in this context is someone who has the following qualifications:

- Appropriate instruction
- Knowledge of this documentation and other applicable documentation.
- SEW-EURODRIVE recommends additional training for products that are operated using this software.

2.3 Designated use

The MOVISUITE® engineering software is the operating platform for all MOVI-C® hardware and software components.

2.4 Bus systems

A bus system makes it possible to adapt electronic drive components to the particulars of the machinery within wide limits. There is a risk that a change of parameters that cannot be detected externally may result in unexpected (but not uncontrolled) system behavior and may have a negative impact on operational safety, system availability, or data security.

Especially in Ethernet-based networked systems and with engineering interfaces, make sure that unauthorized access is prevented.

Use IT-specific safety standards to increase access protection to the ports. For a port overview, refer to the respective technical data of the device in use.

3 Introduction

3.1 Short designation in the documentation

The following short designations are used in this documentation:

Type designation	Short designation
MOVISUITE® standard	MOVISUITE®
MOVI-C® CONTROLLER power UHX85A or MOVI-C® CONTROLLER advanced UHX45A or MOVI-C® CONTROLLER standard UHX25A	MOVI-C® CONTROLLER
MOVI-C® CONTROLLER power UHX85A	MOVI-C® CONTROLLER power UHX85A

3.2 Content of this documentation

The documentation in hand enables you to install the engineering software correctly and to adjust existing projects to the latest version of MOVISUITE®.

4 Installation

4.1 Before updating to MOVISUITE® version V1.2.1253.0

INFORMATION



When you update to MOVISUITE® version V1.2.1253.0, an existing IEC project can only be used with MOVI-C® CONTROLLERS that have a firmware version which is compatible with MOVISUITE® version V1.2.1253.0.

INFORMATION



Changes to MOVI-C® devices may only be made with the matching MOVISUITE® version.

For an overview of versions of MOVI-C® devices for MOVISUITE® versions V1.1.1180.0 and V1.2.1253.0, refer to the "Appendix" (→ 25).


4.1.1 Update to MOVISUITE® version V1.2.1253.0 required

An update to MOVISUITE® version V1.2.1253.0 is required in the following cases:

- You want to use MOVI-C® CONTROLLER advanced UHX45A or MOVI-C® CONTROLLER standard UHX25A that was delivered by SEW-EURODRIVE between January and July 2018. These devices will not be supported by MOVISUITE® up to version V1.1.1180.0.
- You want to use MOVI-C® CONTROLLER power UHX85A that was delivered by SEW-EURODRIVE between January and July 2018. The firmware state of these devices must be taken into operation with MOVISUITE® version V1.2.1253.0.
- You want to use a MOVISAFE® safety card CSS21A, CSB21A, CSS31A or CSB31A. These safety cards are not supported by MOVISUITE® up to version V1.1.1180.0.
- You want to use one of the following features of the new version:
 - Deactivating the axis replacement function
 - Deactivating the software module update in the IEC project
 - Engineering via fieldbus
 - Extended EtherCAT®/SBus^{PLUS} diagnostics
 - Reducing the runtime of cyclic tasks by moving the mapping calls from the cyclic tasks to the free-running tasks

4.1.2 No update to MOVISUITE® version V1.2.1253.0 required

An update to MOVISUITE® version V1.2.1253.0 is **not** necessarily needed in the following cases:

- None of the cases described in chapter "Update to MOVISUITE® version V1.2.1253.0 required" (→  7) apply to you.
- You use MOVI-C® CONTROLLERS that were delivered by SEW-EURODRIVE before January 2018.
- There are axis modules in already existing systems that have been taken into operation with a MOVISUITE® version V1.1.xxxx.x. Axis modules that were delivered by SEW-EURODRIVE after January 2018 can be used without having to adjust their firmware (downward compatibility). However, you can only use features for your axis modules that is supported by the firmware version of the already existing system.

4.1.3 Integrating axis modules

Axis modules can only be operated on a MOVI-C® CONTROLLER with the same firmware version. If the firmware of the axis modules is older than the MOVI-C® CONTROLLER, you will have to update the firmware of the axis modules.

For support in updating the firmware, contact SEW-EURODRIVE Service.

4.2 Requirements

4.2.1 Installation requirements

Before installing MOVISUITE®, observe the following requirements:

- You must have administrator rights for your PC.
- You can install only **one** MOVISUITE® version on your PC.

Before changing to the latest MOVISUITE® version, read the instructions in chapter "Before updating to MOVISUITE® version V1.2.1253.0" (→ 7).

- If a MOVISUITE® version up to V1.1.xxxx.x is installed on your PC, uninstall it. From version V1.1.xxxx.x, the predecessor version is uninstalled automatically when installing MOVISUITE®.

4.2.2 Hardware requirements

Processor	1 GHz 32-bit processor (x86) or 64-bit processor
RAM	4 GB (recommended)
Hard disk	6 GB of free memory in total, 4 GB of that on the operating system hard disk for complete installation of MOVISUITE®
Graphics card	2 GB graphics memory
Resolution	The default resolution is full HD resolution. A resolution of 1280 x 800 is appropriate.

4.2.3 Requirements on the operating system

Operating system	<p>MOVISUITE® is a 32-bit application.</p> <p>The following operating system variants are permitted:</p> <ul style="list-style-type: none"> • Windows 7 at least SP1 32-bit/64-bit • Windows 8.1 32-bit/64-bit • Windows 10 32-bit/64-bit
Redistributables	<p>The following Microsoft components must also be installed:</p> <ul style="list-style-type: none"> • Microsoft Windows Installer 3.1 or higher • Microsoft.NET Framework 4.5

4.3 Installing the software

INFORMATION



The installation will only be performed if the IEC Editor version of the installation package (version V3.5.9.50) is **not** installed on your PC.

INFORMATION



If you have already installed a MOVISUITE® software on your PC and you have worked with MOVISUITE® or the IEC Editor after having started your PC last time, then start your PC again before installing a new MOVISUITE® version.

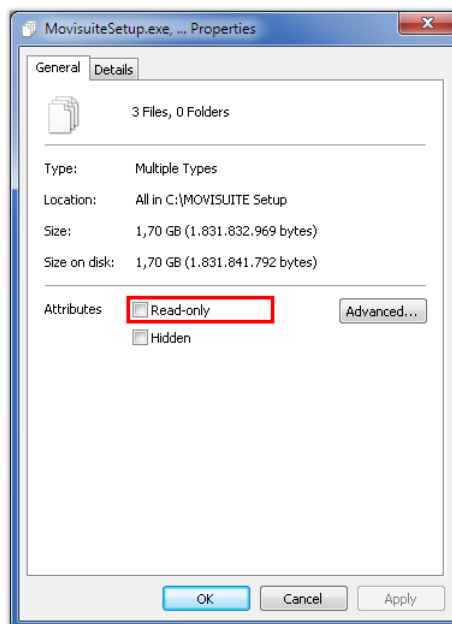
MOVISUITE® is installed in several steps:

- "Preparing the installation" (→ 10)
- "Performing the installation" (→ 11)

4.3.1 Preparing the installation

Proceed as follows:

1. Copy the following installation files to the hard disk of your PC:
 - ⇒ movisuite.syspkg
 - ⇒ MOVISUITE-Licence.txt
 - ⇒ MovisuiteSetup.exe
2. If the installation files are available on a write-protected medium (for example a DVD), remove the write protection from all three installation files. To do so, open the context menu with a right mouse-click and open the properties of the files.
3. On the "General" tab, disable the "Read only" check box.

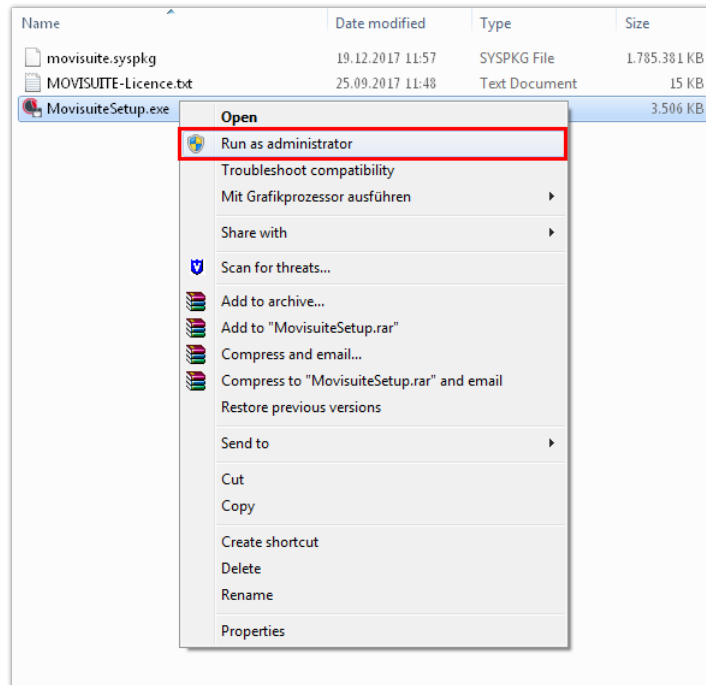


23509746059

4.3.2 Performing the installation

Proceed as follows:

1. Run the MovisuiteSetup.exe installation file with administrator rights. To do so, right-click the file to open the context menu and select [Run as administrator].



23510526475

⇒ The software is installed using a wizard.

2. If you are requested to reboot your PC when installing the IEC Editor, it is important that you follow this instruction.

INFORMATION



If you do not reboot your PC, an error will occur when installing the IEC packages. This error can only be eliminated by restarting the PC and installing MOVISUITE® again.

⇒ After PC reboot, the wizard continues installing MOVISUITE®.

4.3.3 Installation failed

In rare cases, virus scanners or firewalls can cause problems when installing MOVISUITE®. In this case, refer to the log files of the virus scanner or the firewall for information on possible problems.

5 Adjusting an existing MOVISUITE® project

How to adjust an existing MOVISUITE® project to MOVISUITE® version V1.2.1253.0 is described in detail by way of an example. In this example, a device topology is used with a MOVI-C® CONTROLLER power UHX85A and lower-level axis modules.

5.1 Displaying the firmware of a MOVI-C® CONTROLLER power UHX85A

The following table gives an overview of the versions of MOVI-C® CONTROLLER power UHX85A and the associated software versions:

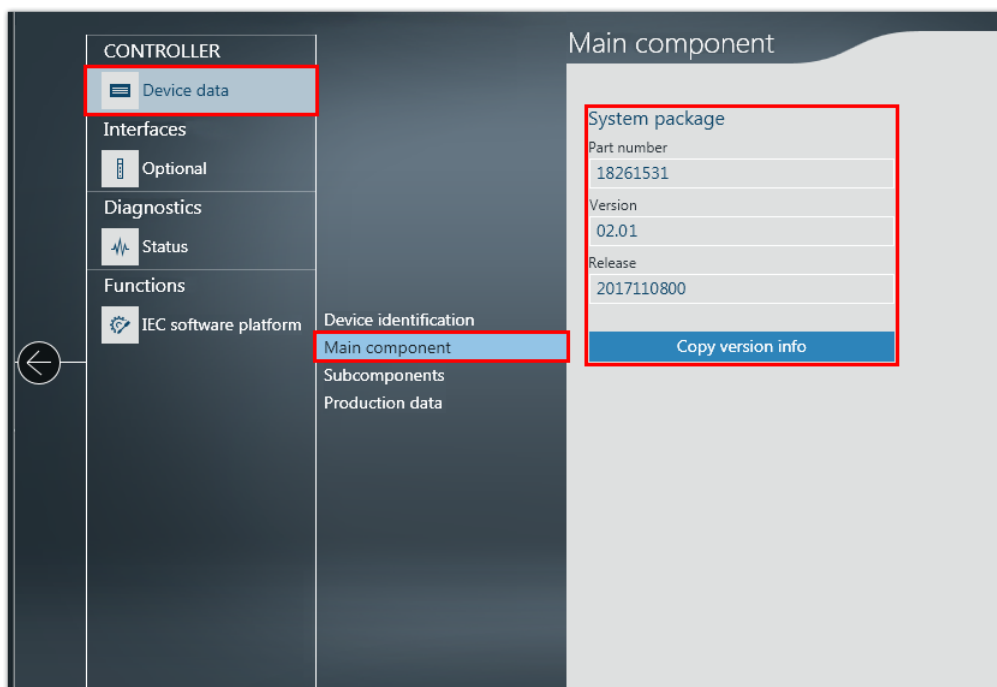
MOVI-C® CONTROLLER power UHX85A firmware version	MOVISUITE® version	IEC Editor version	EtherCAT MasterSEW version (in the IEC Editor)
Part number: 18261531 Version: 02.00 Release: 2017032400	1.1.1180.0	3.5.9.54	1.0.200.0
Part number: 18261531 Version: 02.01 Release: 2017121400	1.2.1253.0	3.5.9.61	1.1.200.0

The firmware version of the MOVI-C® CONTROLLER power UHX85A is displayed in MOVISUITE®.

Proceed as follows:

- ✓ The connection between the engineering PC and MOVI-C® CONTROLLER power UHX85A is established.

1. Start MOVISUITE®.
2. Open the configuration of the MOVI-C® CONTROLLER power UHX85A and check the firmware version.



23369691403

INFORMATION



For an overview of versions of MOVI-C® devices for MOVISUITE® versions V1.1.1180.0 and V1.2.1253.0, refer to the "Appendix" (→ 25).

5.2 Converting an IEC project into MOVISUITE® version V1.2.1253.0

Signature conflicts can occur if the firmware version of the MOVI-C® CONTROLLER power UHX85A differs from the firmware version of the device in the IEC project. The firmware version of the MOVI-C® CONTROLLER power UHX85A in the IEC project must be updated. The axis modules can have more recent firmware versions (see chapter "Integrating axis modules" (→ 8)).

INFORMATION



Use only copies of the original project to prevent the original project from being changed accidentally.

Do the following to convert an IEC project created with a predecessor version of MOVISUITE® into a MOVISUITE® project version V1.2.1253.0:

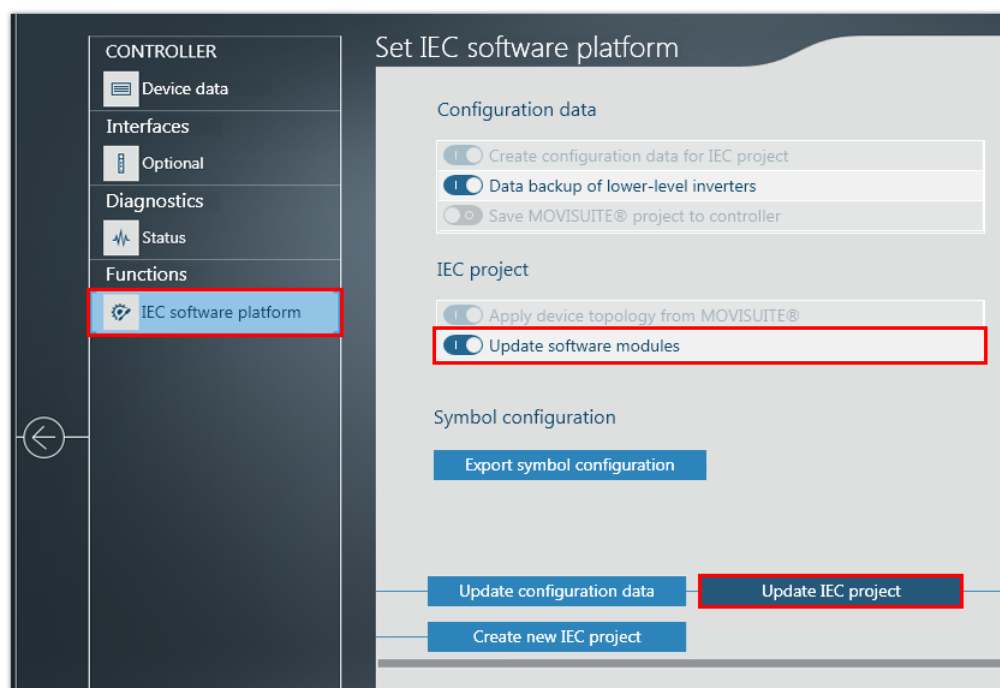
- "Converting an IEC project automatically" (→ 14)
- "Converting an IEC project manually" (→ 17)

5.2.1 Converting an IEC project automatically

Proceed as follows:

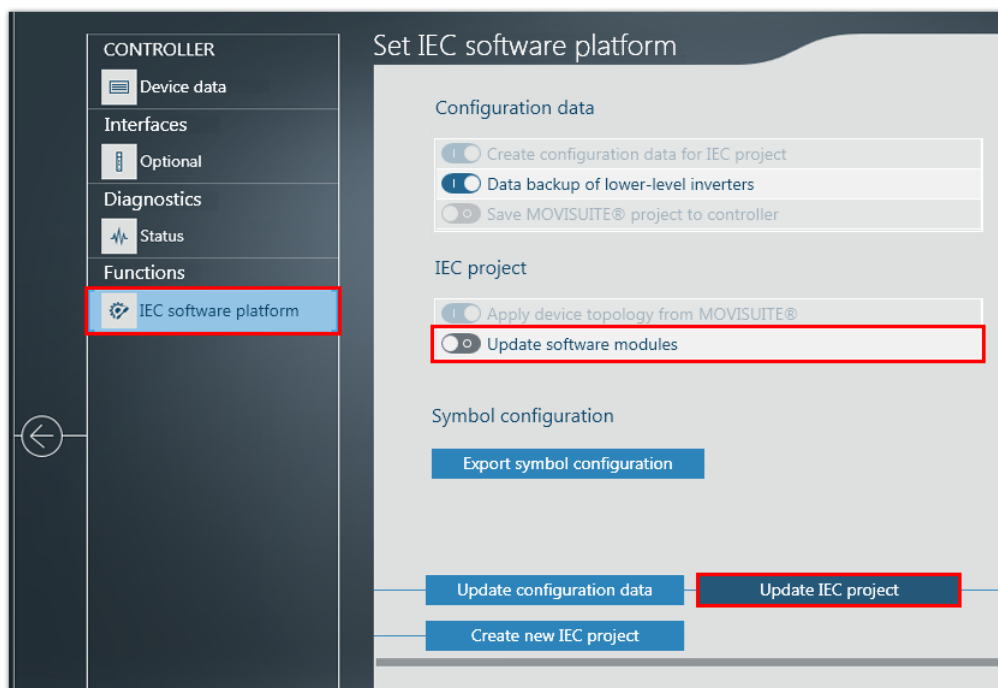
- ✓ The firmware of MOVISUITE® version V1.2.1253.0 is installed on the MOVI-C® CONTROLLER power UHX85A and on the axis modules. The firmware versions of the axis modules can be more up to date. For an overview of versions of MOVI-C® devices for MOVISUITE® version V1.2.1253.0, refer to chapter "Overview of components of MOVISUITE® version V1.2.1253.0" (→ 26).

1. Start MOVISUITE®.
2. Open the configuration of MOVI-C® CONTROLLER power UHX85A.
3. Perform one of the following actions depending on whether you want to update the IEC software modules or not:
 - ⇒ If you want to update all IEC objects, activate the "Update software modules" toggle button. Devices, instances, and IEC software modules will be generated anew.



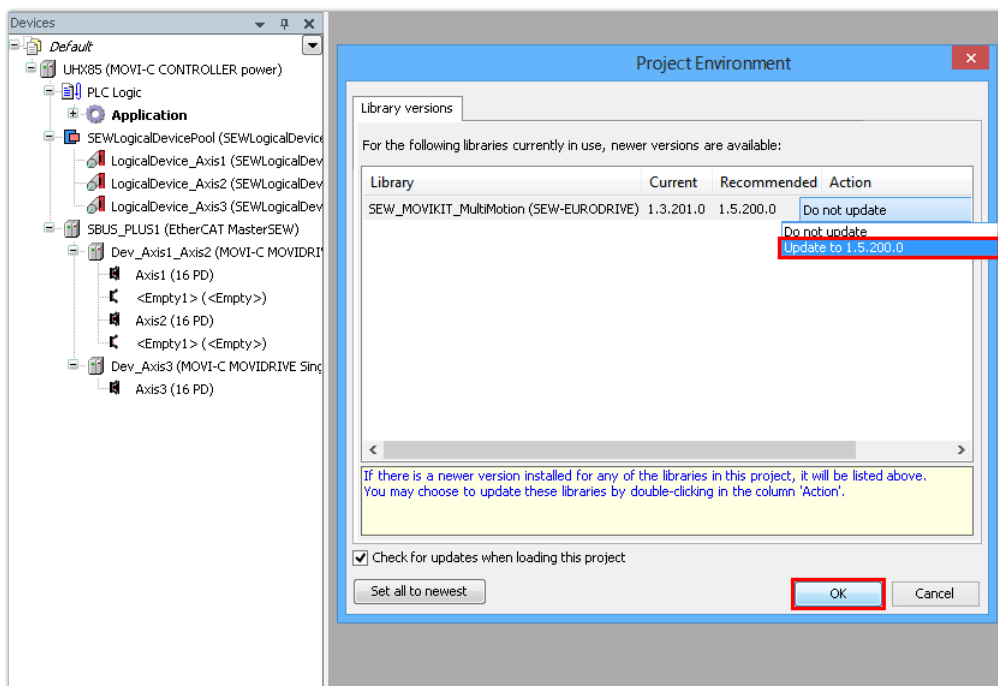
23512020363

- ⇒ If you only want to update the devices, disable the "Update software modules" toggle button. Instances and the IEC software modules will not be changed.



23512025995

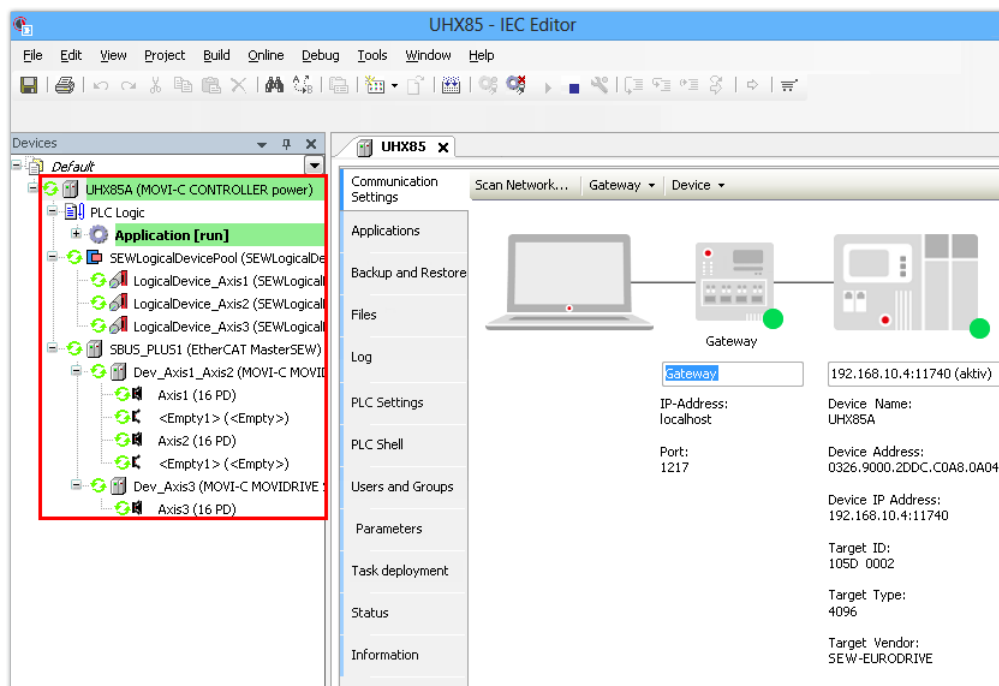
4. Click [Update IEC project].
 - ⇒ The IEC Editor starts. Depending on the setting, either the codes of all IEC objects are generated anew or only the codes of the devices. Generating the code results in a version adjustment of IEC objects/devices to MOVISUITE® version V1.2.1253.0
 - ⇒ A message appears that shows the library versions in use.
5. Perform the action "Update to 1.5.200.0".



23517301771

6. Compile the IEC program into the machine code of the MOVI-C® CONTROLLER power UHX85A.

7. After successful compilation of the IEC program, the program can be transferred to the MOVI-C® CONTROLLER power UHX85A. For this purpose, log on to the network.
 - ⇒ A message appears on the MOVI-C® CONTROLLER power UHX85A to inform about the loading of the IEC program of the IEC project.
8. Confirm the message.
9. Start the IEC program.
 - ⇒ The MOVI-C® CONTROLLER power UHX85A starts. The devices in the device tree are marked by a green circle.



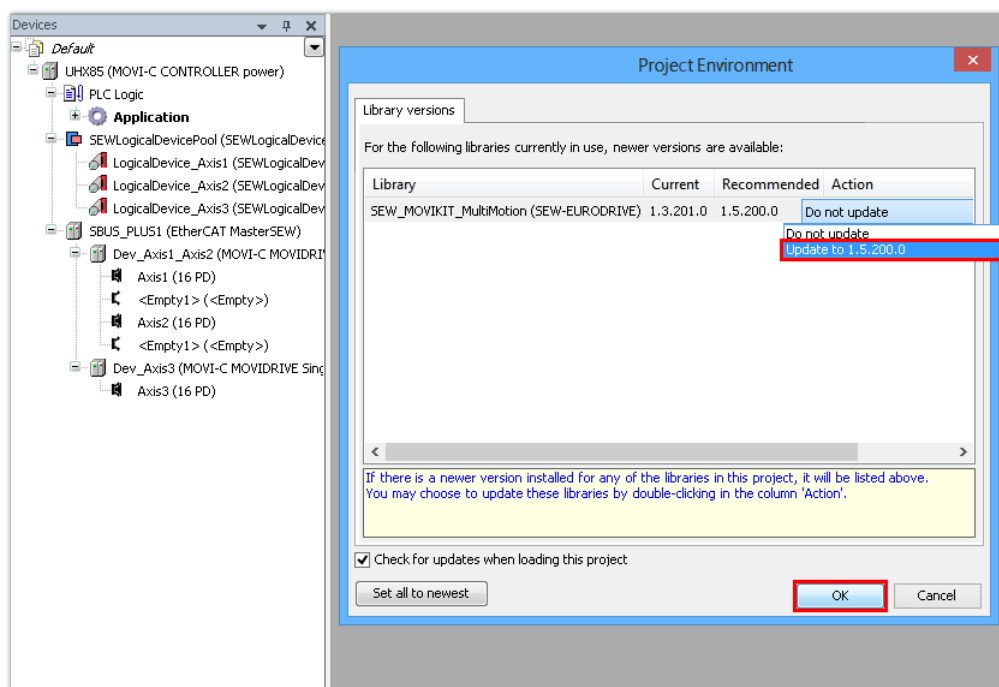
23527560587

10. Create a boot project. This way, the IEC project is saved on the CFast memory card of the MOVI-C® CONTROLLER power UHX85A and is still available after re-start of the MOVI-C® CONTROLLER power UHX85A.

5.2.2 Converting an IEC project manually

Proceed as follows:

- ✓ The firmware of MOVISUITE® version V1.2.1253.0 is installed on the MOVI-C® CONTROLLER power UHX85A and on the axis modules. The firmware versions of the axis modules can be more up to date. For an overview of versions of MOVI-C® devices for MOVISUITE® version V1.2.1253.0, refer to chapter "Overview of components of MOVISUITE® version V1.2.1253.0" (→ 26).
- 1. Start MOVISUITE®.
- 2. Open the IEC Editor. If you have opened tree view in MOVISUITE®, select [Tools] > [IEC Editor] from the context menu of the MOVI-C® CONTROLLER power UHX85A. In circle view of the MOVI-C® CONTROLLER power UHX85A, select the menu item [IEC Editor] via "Tools".
 - ⇒ The IEC Editor starts. A message appears that shows the library versions in use.
- 3. Perform the action "Update to 1.5.200.0".

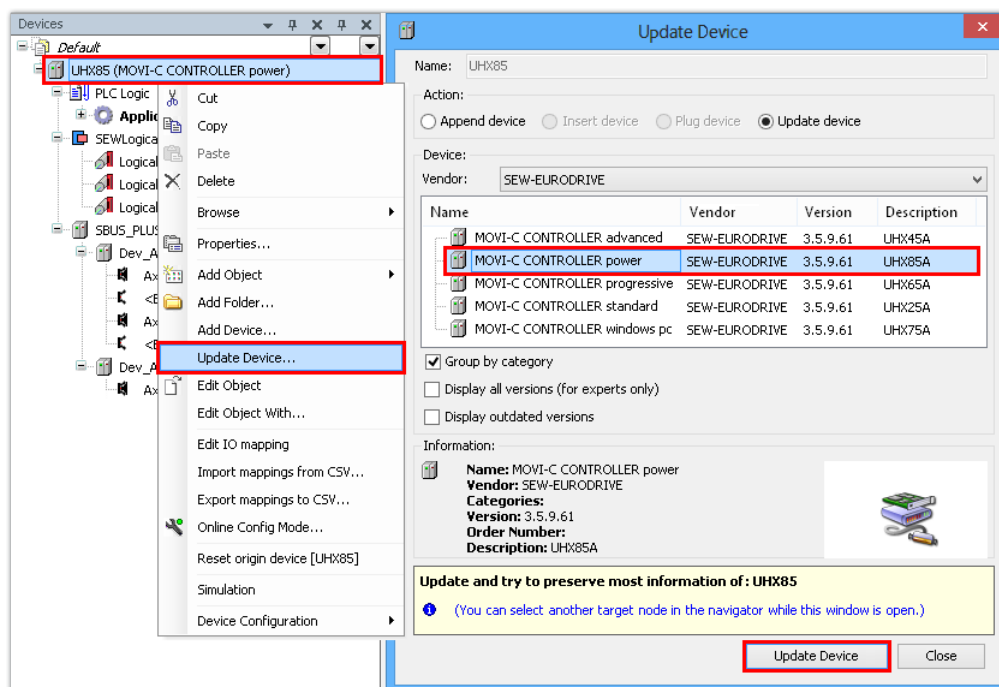


23517301771

5 Adjusting an existing MOVISUITE® project

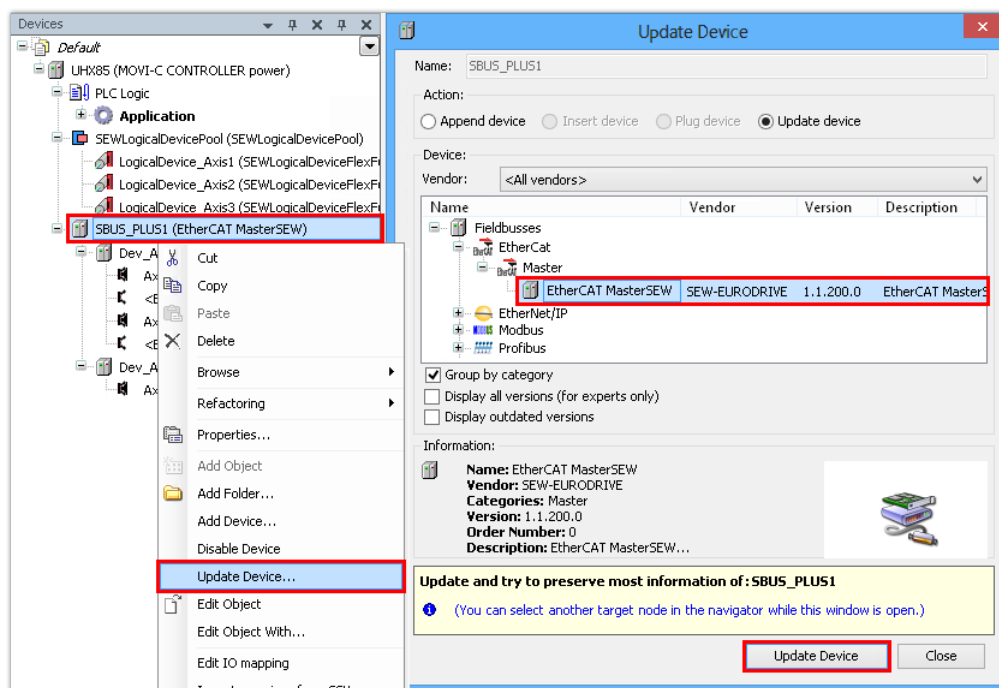
Converting an IEC project into MOVISUITE® version V1.2.1253.0

- Right click to open the context menu of the MOVI-C® CONTROLLER power UHX85A and select the required device from the device list in the "Update Device" window. To reduce the number of devices in the device list, select the entry "SEW-EURODRIVE" from the "Vendor" drop-down list.



23520399371

- Next, click [Close].
- Right click to open the context menu of the EtherCAT®/SBus^{PLUS} master and select the required device from the device list of the "Update Device" window.

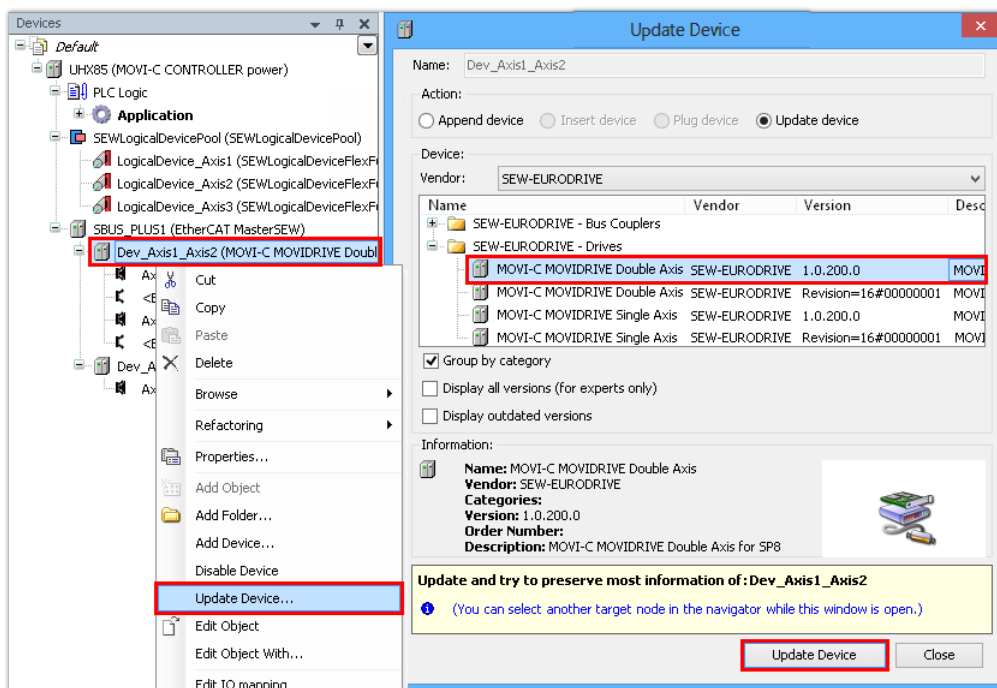


23520407051

- Next, click [Close].

24819735/EN – 03/2018

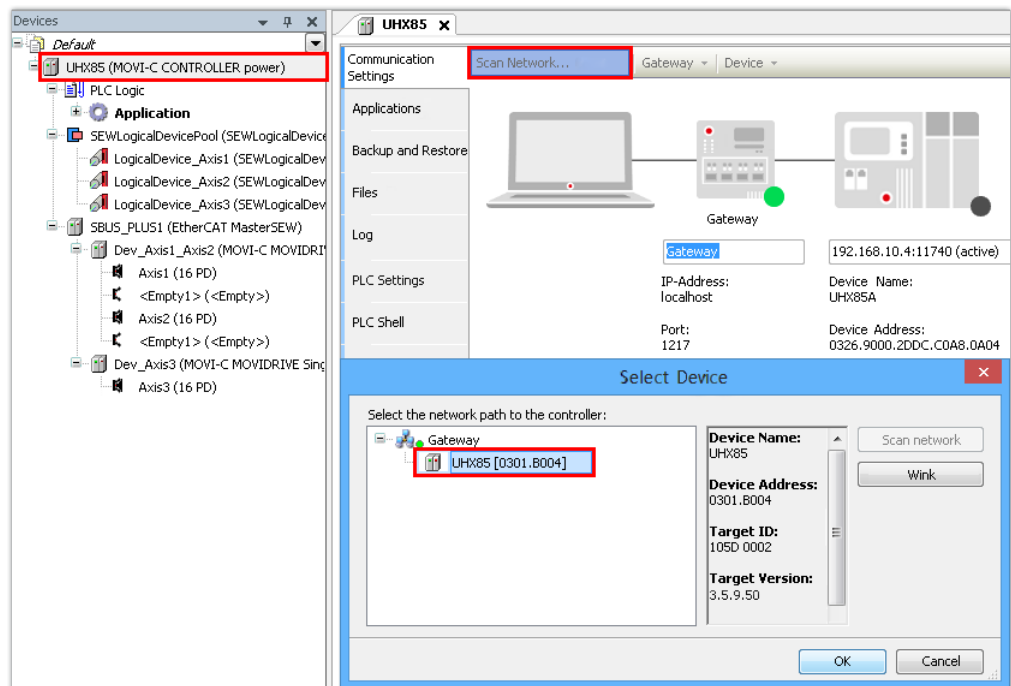
8. The axis modules are assigned to the lower level of the EtherCAT®/SBus^{PLUS} master (MOVI-C® CONTROLLER power UHX85A). You have to update these axes individually. How to update the axes is explained by taking a double axis as example:
 - ⇒ Right click to open the context menu of the double axis and select the required version from the device list of the "Update Device" window. To reduce the number of devices in the device list, select the entry "SEW-EURODRIVE" from the "Vendor" drop-down list.



23526352139

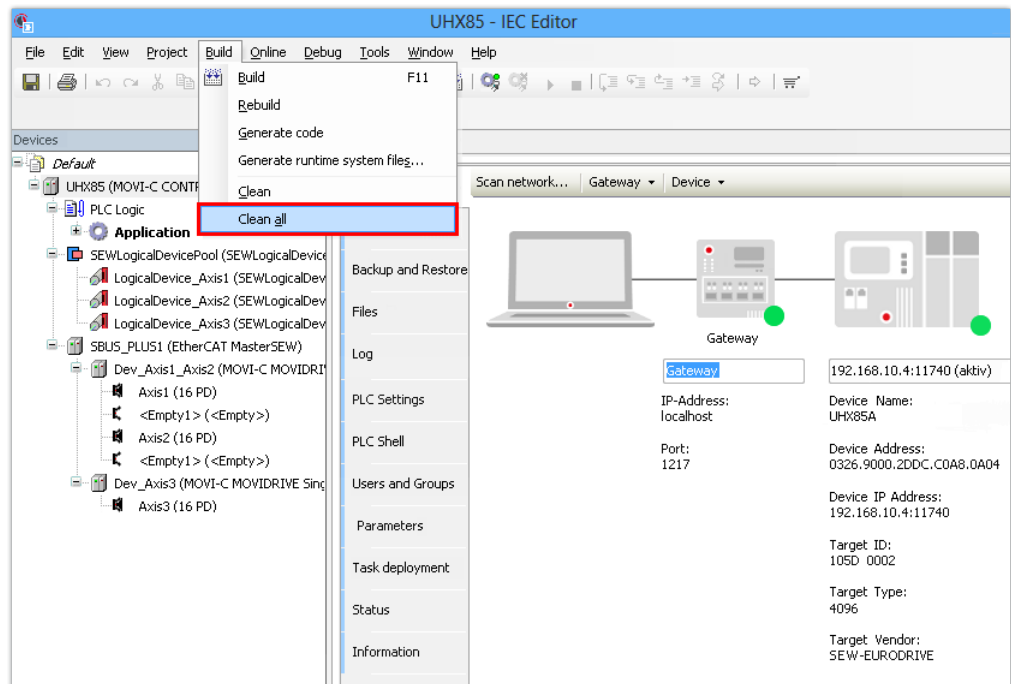
9. Next, click [Close].
10. If you use further fieldbus systems, update them in the same way as the EtherCAT®/SBus^{PLUS} master.

11. To establish a connection from the IEC project to the MOVI-C® CONTROLLER power UHX85A, double-click on MOVI-C® CONTROLLER power UHX85A in the device tree and scan the network. Add the found device.



23526359179

12. Compile the IEC program into the machine code of the MOVI-C® CONTROLLER power UHX85A.
13. If an error message appears while generating the code, perform a cleaning operation.

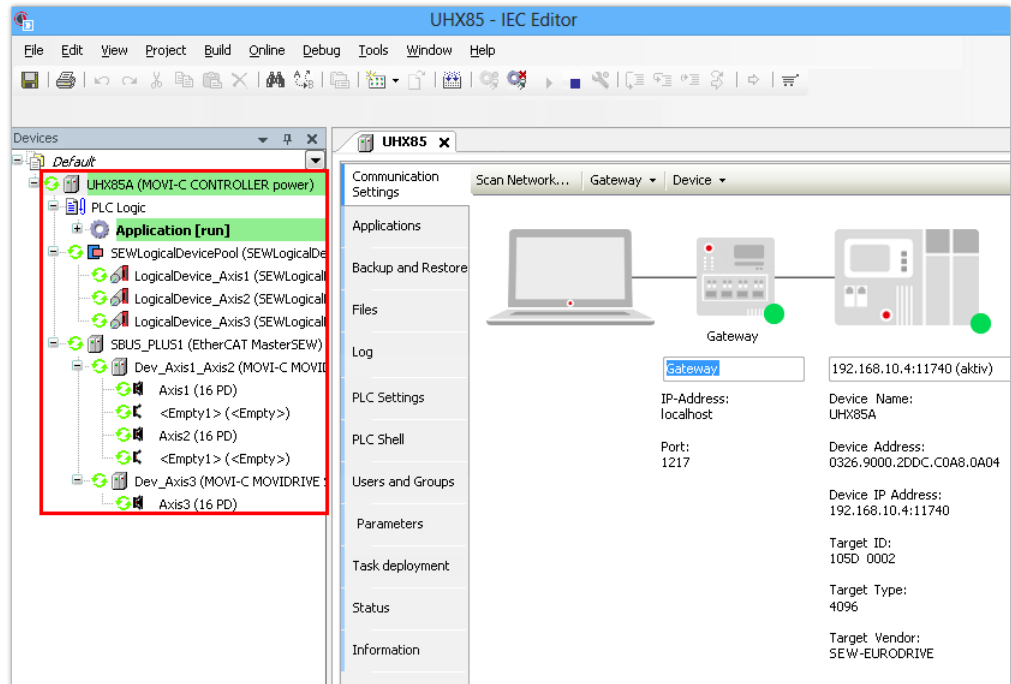


23527554955

⇒ A message opens to show the result of the cleaning operation.

14. Confirm the message.

15. Start again to compile the IEC program. After successful compilation, the program can be transferred to the MOVI-C® CONTROLLER power UHX85A. For this purpose, log on to the network.
 - ⇒ A message appears on the MOVI-C® CONTROLLER power UHX85A to inform about the loading of the IEC program of the IEC project.
16. Confirm the message.
17. Start the IEC program.
 - ⇒ The MOVI-C® CONTROLLER power UHX85A starts. The devices in the device tree are marked by a green circle.



23527560587

18. Create a boot project. This way, the IEC project is saved on the CFast memory card of the MOVI-C® CONTROLLER power UHX85A and is still available after re-start of the MOVI-C® CONTROLLER power UHX85A.

5.3 Opening the IEC project

An IEC project created with MOVISUITE® version V1.1.1180.0 can be opened with MOVISUITE® version V1.2.1253.0, for example to read program code or perform troubleshooting. However, all changes to the IEC project, such as project compilation, must be made with MOVISUITE® version V1.1.1180.0.

INFORMATION



Use only copies of the original project to prevent the original project from being changed accidentally.

INFORMATION

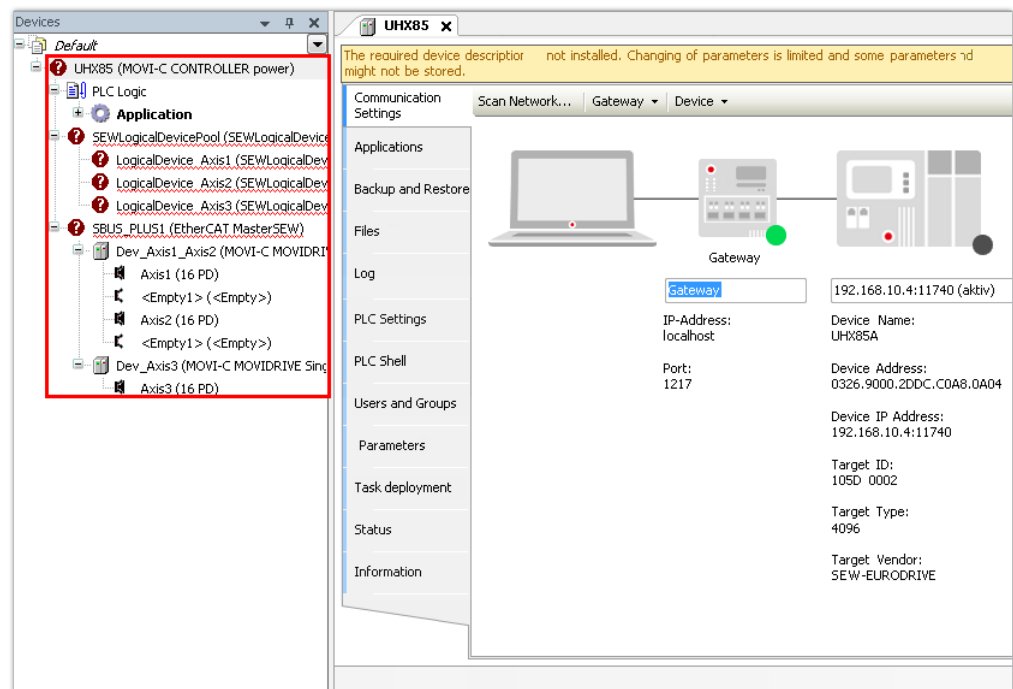


Do **not** try to open an IEC project, which has been created with MOVISUITE® version V1.2.1253.0, in MOVISUITE® version V1.1.1180.0.

The parts of the IEC project are changed to the latest MOVISUITE® version.

Proceed as follows:

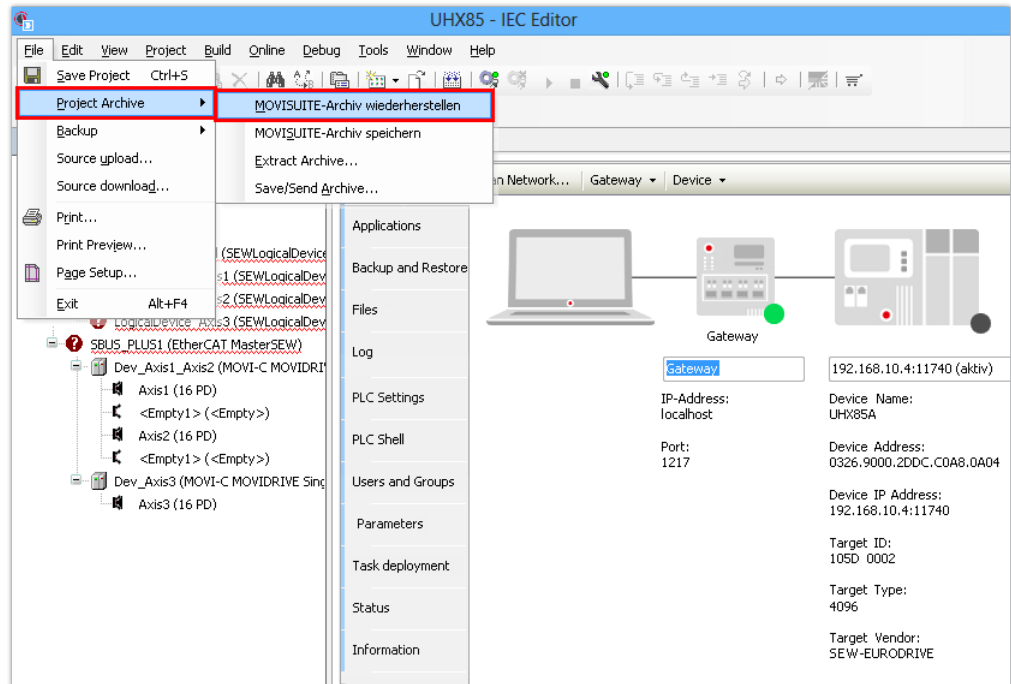
1. Start MOVISUITE®.
2. Open the IEC Editor. If you have opened tree view in MOVISUITE®, select [Tools] > [IEC Editor] from the context menu of the MOVI-C® CONTROLLER power UHX85A. In circle view of the MOVI-C® CONTROLLER power UHX85A, select the menu item [IEC Editor] via "Tools".
 - ⇒ The IEC Editor starts.
 - ⇒ If you work on a PC on which MOVISUITE® version V1.1.1180.0 has not been installed, the devices will be marked by a red "?" symbol. The reason is that the repositories of MOVISUITE® version V1.1.1180.0 do not exist.



23534824331

- ⇒ If version V1.1.1180.0 was installed before MOVISUITE® version V1.2.1253.0, then the repositories of V1.1.1180.0 are already available. A message appears that shows the library versions in use. In this case continue with step 4.

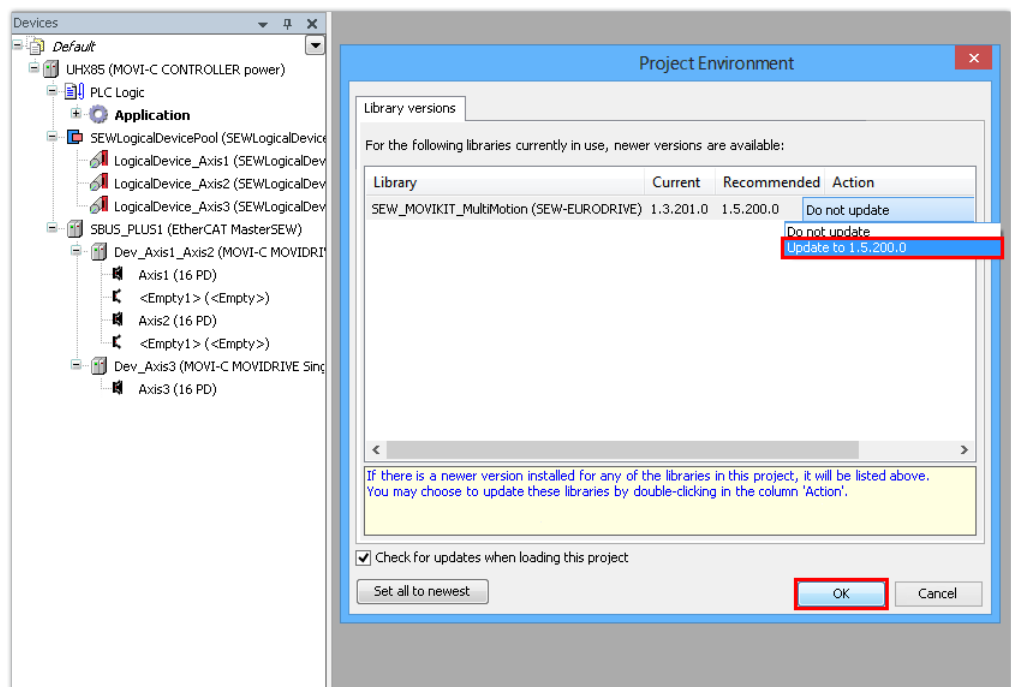
- If the repositories of MOVISUITE® version V1.1.1180.0 are missing, restore the MOVISUITE® archive.



23539683339

⇒ A message appears that shows the library versions in use.

- If you want to use the new version of the MOVIKIT® software module, perform the action "Update to 1.5.200.0". The "Monitor" tool needs the latest version of the software module to display and control all variables correctly. If you do not update the software module, an error message will appear when opening the "Monitor" tool.

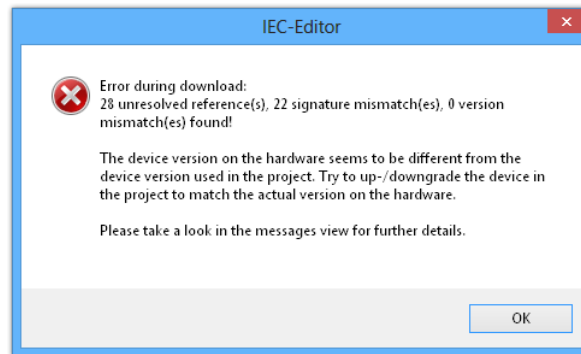


23517301771

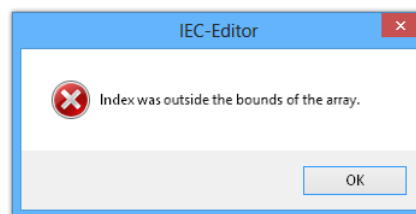
5.4 Incompatible constellations

A connection with the MOVI-C® CONTROLLER can only be established successfully in the IEC Editor when the firmware of the MOVI-C® CONTROLLER and the version of the MOVISUITE® in use match.

If you attempt, for example, to use an IEC project created with MOVISUITE® version V1.1.1180.0 with a MOVI-C® CONTROLLER power UHX85A with firmware version 2.01, then the following error messages appear when trying to establish a connection:



23541613451



23541618571

MOVISUITE® version V1.2.1253.0 would be compatible with the MOVI-C® CONTROLLER power UHX85A with firmware version 2.01 (see "Appendix" (→ 25)).

You can rectify this error by converting the IEC project to MOVISUITE® version V1.2.1253.0 (see chapter "Adjusting an existing MOVISUITE® project" (→ 12)).

6 Appendix

6.1 Overview of components of MOVISUITE® version V1.1.1180.0

Software component	Version
IEC Editor	3.5 SP9 patch 5
SEW profile (IEC)	SEW 3.5.9.50 (V2)
MOVIKIT® software modules:	
MOVIKIT® MultiMotion	1.3.201.0
MOVIKIT® MultiMotion Camming	1.3.201.0
IEC Editor libraries:	
SEW IoDrvEtherCAT Library	1.0.200.0
SEW IoDrvLogicalDevicePool Library	1.0.200.0
SEW Common Fieldbus Slave External Library	1.0 – 200.0
SEW DeviceHandler Library	1.0.200.0
SEW DeviceHandler Interfaces Library	1.0.100.7
SEW PDO Handling Library	1.0.100.7

MOVI-C® devices	Part number	Version	Release
MOVI-C® CONTROLLER power UHX85A	System package: 18261531 HAL package: 18261523 OS package: 18261515	02.00	System package: 2017032400 HAL package: 2017031600 OS package: 2017031000
MOVIDRIVE® modular single-axis module MDA	18259774	02.03	201703161
MOVIDRIVE® modular double-axis module MDD	18259804	02.03	201703161
MOVIDRIVE® system MDX	18259731	02.03	201703161

6.2 Overview of components of MOVISUITE® version V1.2.1253.0

Software component	Version
IEC Editor	3.5 SP9 patch 5
SEW profile (IEC)	SEW 3.5.9.50 (V3)
MOVIKIT® software modules:	
MOVIKIT® MultiMotion	1.5.200.0
MOVIKIT® MultiMotion Camming	1.5.200.0
IEC Editor libraries:	
SEW IoDrvEtherCAT Library	1.1.200.0
SEW IoDrvLogicalDevicePool Library	1.0.200.0
SEW Common Fieldbus Slave External Library	1.2.200.0
SEW DeviceHandler Library	1.0.202.0
SEW DeviceHandler Interfaces Library	1.0.100.7
SEW PDO Handling Library	1.0.200.0

MOVI-C® devices	Part number	Version	Release
MOVI-C® CONTROLLER power UHX85A	System package: 18261531 HAL package: 18261523 OS package: 18261515	02.01	System package: 2017121400 HAL package: 2017120700 OS package: 2017101200
MOVI-C® CONTROLLER advanced UHX45A	System package: 18261353 HAL package: 18261345 OS package: 18261337	01.00	System package: 2017110800 HAL package: 2017110800 OS package: 2017110800
MOVI-C® CONTROLLER standard UHX25A	System package: 18261264 HAL package: 18261256 OS package: 18261248	01.00	System package: 2017110800 HAL package: 2017110800 OS package: 2017110800
MOVIDRIVE® modular single-axis module MDA	18259774	02.10	201712183
MOVIDRIVE® modular double-axis module MDD	18259804	02.10	201712183
MOVIDRIVE® system MDX	18259731	02.10	201712183
MOVISAFE® safety card CSS21A	18260209	01.05	2017121303
MOVISAFE® safety card CSB21A	18260209	01.05	2017121303
MOVISAFE® safety card CSS31A	18260209	01.05	2017121303
MOVISAFE® safety card CSB31A	18260209	01.05	2017121303

Index

A

Administrator rights	11
Axis modules, firmware update required	7

C

Content of the documentation	6
Copyright notice	4

E

Error messages due to incompatible constellations	24
Example project, adjustment to MOVISUITE® version V1.2.1253.0	12

F

Firewall, installation problems	11
---------------------------------------	----

H

Hardware requirements	9
-----------------------------	---

I

IEC project	
Automatic conversion to MOVISUITE® version V1.2.1253.0	14
Error messages	24
Incompatible constellations	24
Manual conversion to MOVISUITE® version V1.2.1253.0	17
Open in MOVISUITE® version V1.2.1253.0 ...	22

Install

As administrator	11
Failed	11
IEC Editor	11
Installation files	10
Installation requirements	9
Administrator rights	9
Hardware requirements	9
Requirements on the operating system	9
Installing the IEC Editor	11

L

Liability	4
-----------------	---

Liability for defects	4
-----------------------------	---

M

MOVI-C® CONTROLLER power UHX85A	
Associated software modules	12
Converting an IEC project automatically	14
Converting an IEC project manually	17
Display firmware version	12
Incompatible constellations	24
Open the IEC project	22

MOVISUITE® version V1.1.1180.0

Associated MOVI-C® devices	25
Software components	25

MOVISUITE® version V1.2.1253.0

Adjusting an existing project	12
Associated MOVI-C® devices	26
Converting an IEC project automatically	14
Converting an IEC project manually	17
Incompatible constellations	24
No update required	7
Open the IEC project	22
Software components	26
Update required	7

MOVISUITE®, number of installed versions	9
--	---

P

Product names	4
---------------------	---

R

Requirements on the operating system	9
--	---

S

Safety notes	
Bus systems	5
Preliminary information	5
Short designation in the documentation	6

T

Trademarks	4
------------------	---

V

Virus scanner, installation problems	11
--	----











SEW-EURODRIVE
Driving the world

SEW
EURODRIVE

SEW-EURODRIVE GmbH & Co KG
Ernst-Blickle-Str. 42
76646 BRUCHSAL
GERMANY
Tel. +49 7251 75-0
Fax +49 7251 75-1970
sew@sew-eurodrive.com
→ www.sew-eurodrive.com