



Manual



CBG Firmware-Loader



Table of contents

1	General information.....	4
1.1	About this documentation	4
1.2	Content of the documentation.....	4
1.3	Product names and trademarks.....	4
1.4	Copyright notice	4
2	Safety notes	5
2.1	Preliminary information	5
2.2	Target group	5
3	Preparation.....	6
3.1	Range of functions	6
3.2	Obtaining and installing the software	6
3.3	Saving data (CBG21A only).....	7
4	Using software	8
4.1	Normal mode	8
4.2	Advanced mode.....	10
4.3	Setting the user interface language	12
4.4	Displaying program information	13

1 General information

1.1 About this documentation

This documentation is an integral part of the product. The documentation is intended for all employees who perform work on the product.

Make sure this documentation is accessible and legible. Ensure that persons responsible for the systems and their operation as well as persons who work with the product independently have read through the documentation carefully and understood it. If you are unclear about any of the information in this documentation, or if you require further information, contact SEW-EURODRIVE.

1.2 Content of the documentation

The descriptions in this documentation apply to the software and firmware versions applicable at the time of publication. These descriptions might differ if you install later software or firmware versions. In this case, contact SEW-EURODRIVE.

1.3 Product names and trademarks

The brands and product names in this documentation are trademarks or registered trademarks of their respective titleholders.

1.4 Copyright notice

© 2020 SEW-EURODRIVE. All rights reserved. Unauthorized reproduction, modification, distribution or any other use of the whole or any part of this documentation is strictly prohibited.

2 Safety notes

2.1 Preliminary information

The following general safety notes serve the purpose of preventing injury to persons and damage to property. They primarily apply to the use of products described in this documentation. If you use additional components, also observe the relevant warning and safety notes.

2.2 Target group

Software specialist Any work with the software may only be performed by a specialist with suitable training. A specialist in this context is someone who has the following qualifications:

- Appropriate training
- Knowledge of this documentation and other applicable documentation
- SEW-EURODRIVE recommends additional training for products that are operated using this software.

3 Preparation

3.1 Range of functions


CBG Firmware-Loader is a software that can be used to update the firmware of keypads of the following series:

- CBG11A
- CBG21A

3.2 Obtaining and installing the software

The current version of the software as a ZIP archive and the system requirements are available for download from <http://www.sew-eurodrive.de>.

The latest available firmware version depends on the installed version of the software. Install always the latest version.

If the software is already installed, you can check the version as described in the chapter "Displaying program information" (→  13).

3.2.1 New installation

If the software was not previously installed on the computer, do the following:

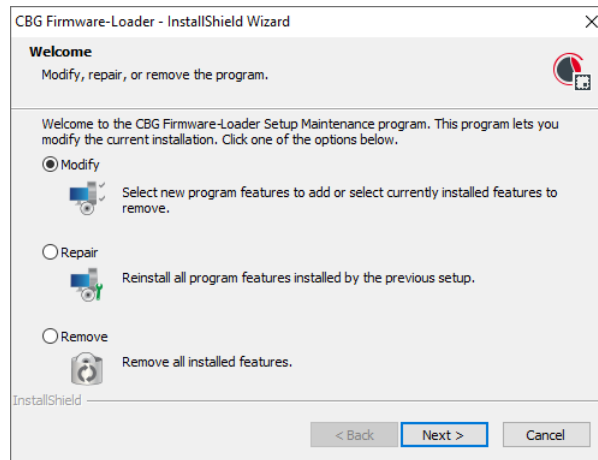
1. Download the software.
 2. Unpack the ZIP archive.
 3. Run the downloaded "CBGFirmwareLoaderSetup.exe" installation file.
 4. Follow the instructions on the screen.
- ⇒ The software is being installed. Once the installation is complete, you will find a shortcut under [Start] > [SEW] > [CBG Firmware-Loader].

3.2.2 Updating an existing installation

To update an already installed version of the software, do the following:

1. Download the software.
2. Unpack the ZIP archive.

3. Run the downloaded "CBGFirmwareLoaderSetup.exe" installation file.
⇒ The following window opens:



33423792267

4. Activate the "Modify" radio button.
5. Click the [Next] button.
6. Follow the instructions on the screen.
⇒ The software is updated.

3.3 Saving data (CBG21A only)

The keypad has additional USB memory on which files can be stored by the user, for example data sets from inverters. An update of the firmware may result in data loss. Therefore, make a data backup before updating the firmware.

INFORMATION



Save all data that is stored in your device before you update the firmware. Should there be a loss of data, you can transfer the saved data back to the keypad after the firmware update.

Do the following:

- ✓ Use a USB cable USB A with USB mini-B. You can obtain a suitable cable from SEW-EURODRIVE by quoting part number 25643517.
- 1. Insert the USB mini-B plug into the corresponding socket of the keypad.
- 2. Insert the USB-A plug into a free USB socket of the PC.
⇒ The keypad switches on.
⇒ The USB memory of the keypad is displayed in Windows Explorer as "CBG21A MTP".
- 3. Copy all contents of the USB memory to a local folder on the PC.
⇒ You have completed the data backup.

4 Using software

The software can be run in normal and in advanced mode. In normal mode, the firmware of the keypad is updated. In advanced mode, also older versions of the firmware can be installed.

INFORMATION



If the connection to the keypad cannot be established, check whether the corresponding USB interface can be used. If a "virtual machine" (VM) is used on the PC, it is often necessary to enable the sharing option for the USB interface.

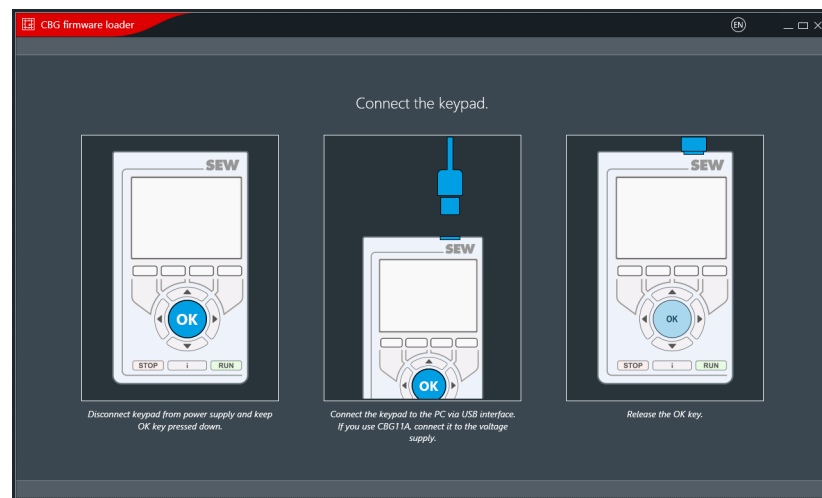
4.1 Normal mode

4.1.1 Establishing a connection

To connect a keypad to a PC for updating the firmware, do the following:

- ✓ Use a USB cable USB A with USB mini-B. You can obtain a suitable cable from SEW-EURODRIVE by quoting part number 25643517.
 - ✓ The keypad is switched on.
1. Start the software.

⇒ The following window opens:



33347695499

2. Insert the USB-A plug into a free USB socket of the PC.
 3. Press and hold down the "OK" key of the keypad.
 4. **CBG11A only:** To supply the keypad with power, connect it to a compatible inverter.
 5. Insert the USB mini-B plug into the corresponding socket of the keypad.
 6. Release the "OK" button on the keypad.
- ⇒ The connection is established and the following window is displayed:



18014431880330635

- [1] Firmware version currently installed on the keypad
- [2] Latest firmware version available for the keypad
- [3] Button for updating the firmware. The button is only active if a newer firmware than the one already installed on the keypad is available.

The software checks the installed firmware version of the keypad and displays the version status.

The latest available firmware version depends on the installed version of the software. Install always the latest version.

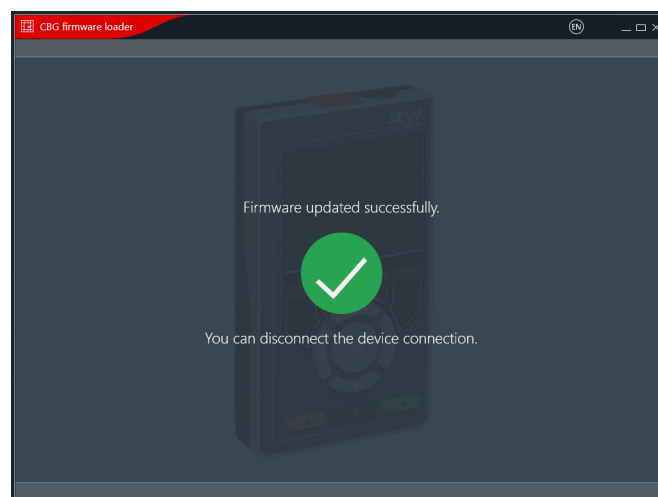
If the keypad already has the latest firmware, no further measures are necessary.

4.1.2 Updating the firmware

1. Click [Load firmware].

⇒ The process is started and the progress is displayed.

After the firmware has been successfully updated, the following window is displayed:



33347693067

INFORMATION



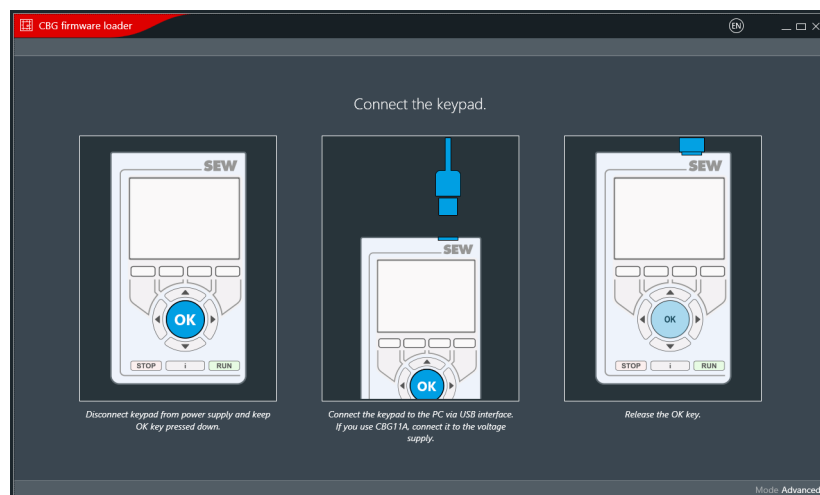
If the transfer process is interrupted, disconnect the keypad from the power supply and start the download again. If the keypad does not start, contact SEW-EURODRIVE Service.

4.2 Advanced mode

4.2.1 Establishing a connection

To connect a keypad to a PC for updating the firmware, do the following:

- ✓ Use a USB cable USB A with USB mini-B. You can obtain a suitable cable from SEW-EURODRIVE by quoting part number 25643517.
 - ✓ The keypad is switched on.
1. Start the Windows command prompt.
 2. Change to the directory "C:\Program Files (x86)\SEW\CBGFirmware-Loader."
 3. Enter the instruction "SEW.CS2.CBGFirmwareLoader.Firmware-Loader.exe -advanced".
 4. Press the Enter key.
- ⇒ The software is started in advanced mode. Now "Mode Advanced" is displayed in the lower right corner of the window. The following window opens:



33350517131

5. Insert the USB-A plug into a free USB socket of the PC.
6. Press and hold down the "OK" key of the keypad.
7. **CBG11A only:** To supply the keypad with power, connect it to a compatible inverter.

8. Insert the USB mini-B plug into the corresponding socket of the keypad.
 9. Release the "OK" button on the keypad.
- ⇒ The connection is established and the following window is displayed:



18014431883052811

- [1] Firmware version currently installed on the keypad
- [2] Button for selecting a firmware version
- [3] Latest firmware version available for the keypad
- [4] Button for updating the firmware. The button is only active if a newer firmware than the one already installed on the keypad is available.
- [5] Indicates that the software was started in advanced mode.

The software checks the installed firmware version of the keypad and displays the version status.

The latest available firmware version depends on the installed version of the software. Install always the latest version.

If the keypad already has the latest firmware, no further measures are necessary.

4.2.2 Selecting the firmware

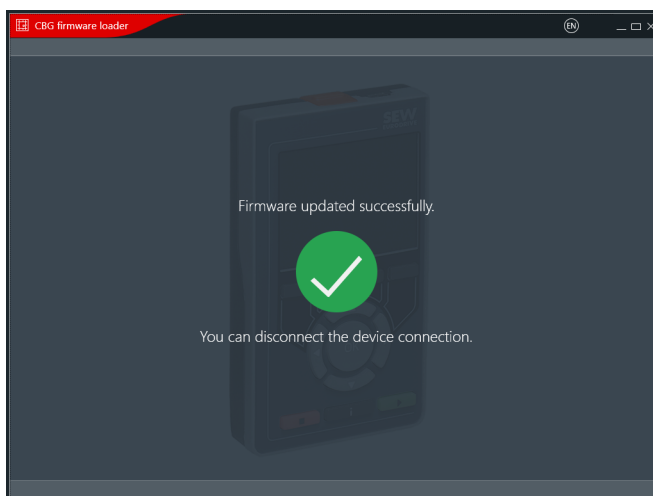
The firmware versions are stored on the PC in the `C:\ProgramData\SEW\CBG-FirmwareLoader\FirmwarePackages` folder. To select a specific firmware version, do the following:

1. Click the [Browse...] button.
 2. Navigate to the folder where the firmware versions are stored.
 3. Click the required file.
 4. Click [OK].
- ⇒ The selected firmware version is displayed in the software as "New firmware version".

4.2.3 Updating the firmware

1. Click [Load firmware].
- ⇒ The process is started and the progress is displayed.

After the firmware has been successfully updated, the following window is displayed:



33347693067

INFORMATION

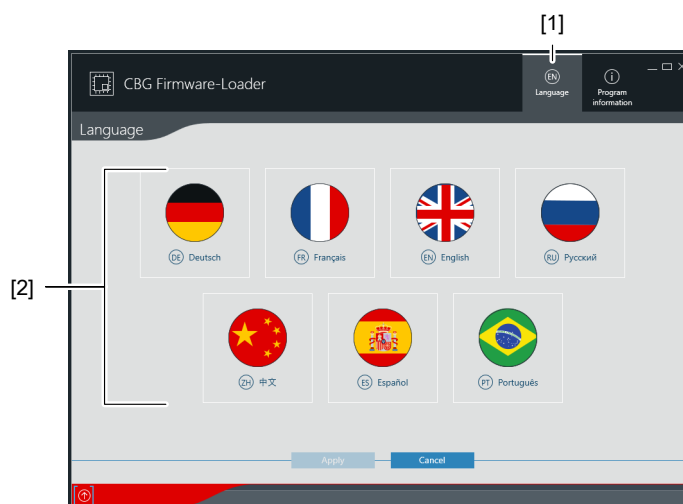


If the transfer process is interrupted, disconnect the keypad from the power supply and start the download again. If the keypad does not start, contact SEW-EURODRIVE Service.

4.3 Setting the user interface language

Do the following:

1. Click the "CBG Firmware-Loader" tab.
 2. Click the [Language] button.
- ⇒ A list of available languages is displayed.



33350597771

- [1] [Language] button
[2] List of available languages

26855046/EN – 09/2020

3. Click on the language you wish to use.
 4. Click [Apply].
- ⇒ The user interface language is changed and the start page of the software is displayed.

4.4 Displaying program information

Do the following:

1. Click the "CBG Firmware-Loader" tab.
 2. Click the [Program information] button.
- ⇒ Information about program version and license is displayed.



33350628235

- [1] [Program information] button
 [2] Program information
 [3] [Close program information] button

3. Click button [3] to close the program information.







SEW-EURODRIVE
Driving the world

SEW
EURODRIVE

SEW-EURODRIVE GmbH & Co KG
Ernst-Blickle-Str. 42
76646 BRUCHSAL
GERMANY
Tel. +49 7251 75-0
Fax +49 7251 75-1970
sew@sew-eurodrive.com
→ www.sew-eurodrive.com