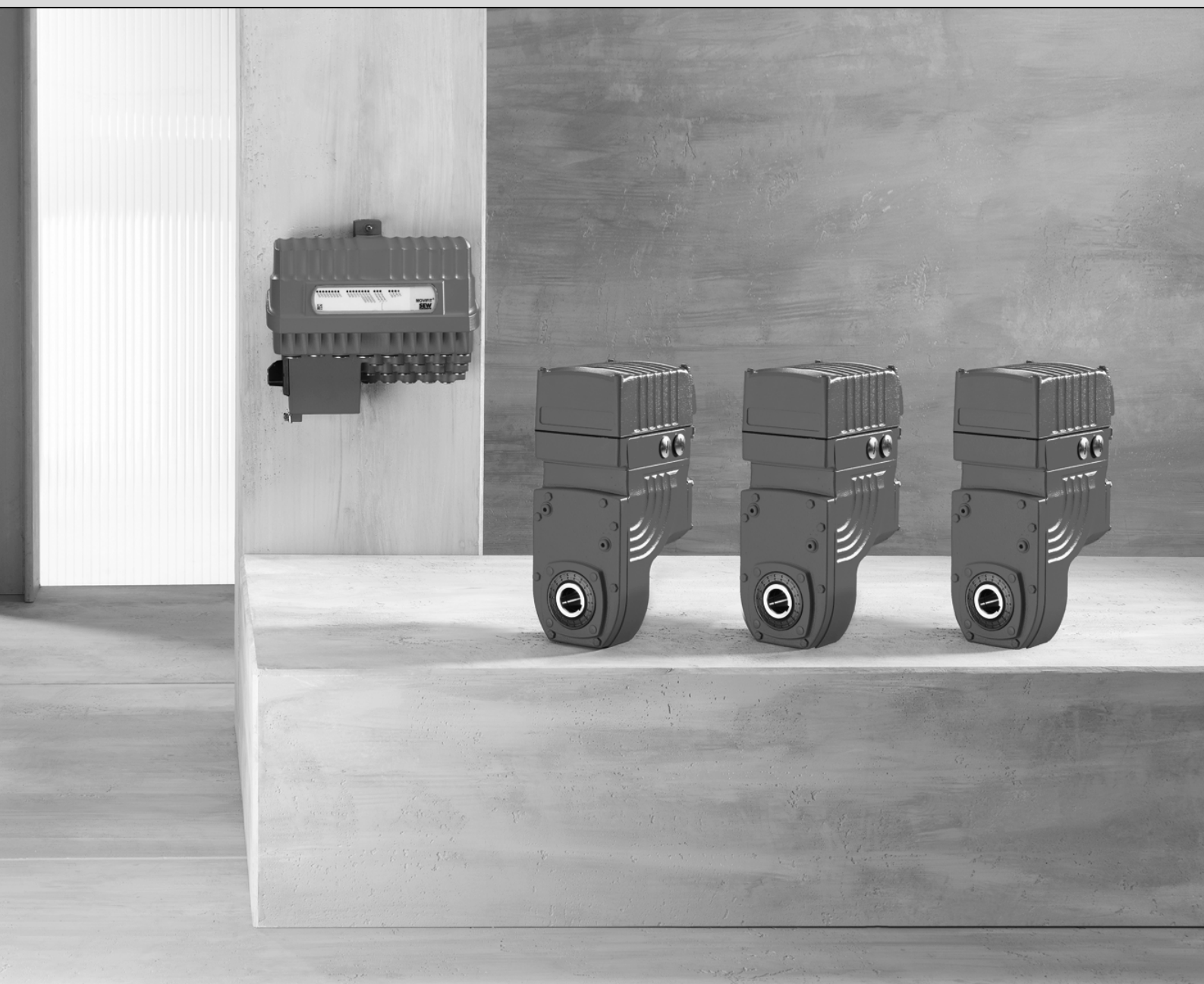




SEW
EURODRIVE



MOVIGEAR[®]-SNI

With Extended Control Range

Edition 01/2009

16768019 / EN

Addendum to the System Manual





Contents

1	Important Information	4
1.1	Structure of the safety notes	4
1.2	Rights to claim under limited warranty	4
1.3	Exclusion of liability	5
1.4	Other applicable documentation	5
1.5	Copyright.....	5
2	MOVIGEAR® SNI with Extended Control Range	6
2.1	Description and order information.....	6
2.2	Selection of MOVIGEAR® SNI with extended control range.....	7
2.3	Dimension drawings of MOVIGEAR® SNI with extended control range	8



Important Information

Structure of the safety notes

1 Important Information

1.1 Structure of the safety notes

The safety notes in this system manual are designed as follows:

Pictogram	! SIGNAL WORD
	Type and source of danger. Possible consequence(s) if the safety notes are disregarded. • Measure(s) to prevent the danger.

Pictogram	Signal word	Meaning	Consequences if disregarded
Example: General danger Specific danger, e.g. electric shock	DANGER WARNING CAUTION	Imminent danger Possible dangerous situation Possible dangerous situation	Severe or fatal injuries Severe or fatal injuries Minor injuries
	STOP	Possible damage to property	Damage to the drive system or its environment
	TIP	Useful information or tip. Simplifies the handling of the drive system.	

1.2 Rights to claim under limited warranty

A requirement of fault-free operation and fulfillment of any rights to claim under limited warranty is that you adhere to the information in the system manual. Therefore, read the system manual before you start operating the unit.

Make sure that the system manual is available to persons responsible for the plant and its operation, as well as to person who work independently on the unit. You must also ensure that the documentation is legible.



1.3 Exclusion of liability

You must comply with the information contained in the system manual to ensure safe operation of MOVIFIT® SNI and MOVIGEAR® SNI and to achieve the specified product characteristics and performance requirements. SEW-EURODRIVE assumes no liability for injury to persons or damage to equipment or property resulting from non-observance of the system manual. In such cases, any liability for defects is excluded.

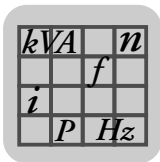
1.4 Other applicable documentation

- This supplementary information does not replace the detailed system manual.
- Installation and startup only by trained personnel observing the relevant accident prevention regulations and the following publication:
 - "MOVIGEAR® SNI" system manual

1.5 Copyright

© 2009 – SEW-EURODRIVE. All rights reserved.

Copyright law prohibits the unauthorized duplication, modification, distribution, and use of this document, in whole or in part.



2 MOVIGEAR® SNI with Extended Control Range

2.1 Description and order information

This design allows for operating MOVIGEAR® SNI drive units with an extended control range (speed range from 1 rpm to 2000 rpm).

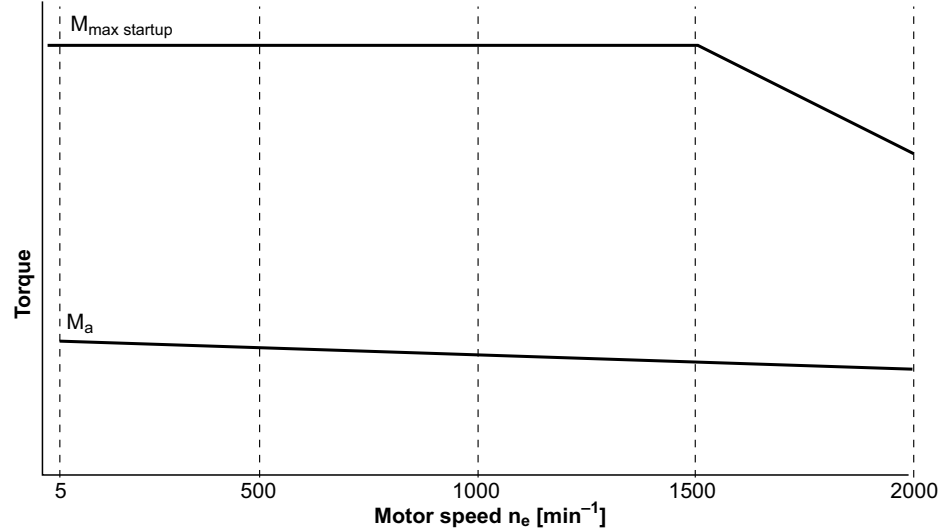
For additional information, refer to section "Selecting MOVIGEAR® SNI with extended control range" (see page 7).

Take into account that with "extended control range", the contour dimensions of the MOVIGEAR® SNI drive units change. For additional information, refer to section "Dimension drawings for MOVIGEAR® SNI with extended control range" (see page 8).

Required order information: Extended control range

2.2 Selection of MOVIGEAR® SNI with extended control range

The following figure shows schematic characteristic curves for the maximum torque ($M_{\max \text{ startup}}$) and the output torque (M_a) in S1 operation. The tables below list the exact values..



1677276299

MGF..2											
	n_a		$M_a^{1)}$					M_{gdf}	$M_{\max \text{ startup}}$	i_{tot}	Weight
	with $n_e = 1$ rpm [rpm]	with $n_e = 2000$ rpm [rpm]	with $n_e = 5$ rpm [Nm]	with $n_e = 500$ rpm [Nm]	with $n_e = 1000$ rpm [Nm]	with $n_e = 1500$ rpm [Nm]	with $n_e = 2000$ rpm [Nm]				
3-stage	0.02	36.2	200	200	200	197	197	200	500 ²⁾	55.25	16.0
	0.03	53.7	147	147	140	133	133	200	500 ²⁾	37.24	
2-stage	0.05	108.0	74	74	71	67	67	192	281 ²⁾	18.52	15.7
	0.10	206.0	39	39	37	35	35	152	147	9.71	
	0.20	400.0	20	20	19	18	18	94	76	5.00	

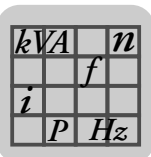
1) For motor speeds $n_e < 5$ rpm, you have to reduce the output torque M_a by factor 0.9.

2) Permitted frequency of occurrence on request.

MGF..4											
	n_a		$M_a^{1)}$					M_{gdf}	$M_{\max \text{ startup}}$	i_{tot}	Weight
	with $n_e = 1$ rpm [rpm]	with $n_e = 2000$ rpm [rpm]	with $n_e = 5$ rpm [Nm]	with $n_e = 500$ rpm [Nm]	with $n_e = 1000$ rpm [Nm]	with $n_e = 1500$ rpm [Nm]	with $n_e = 2000$ rpm [Nm]				
3-stage	0.02	41.7	309	309	309	309	309	388	1000 ²⁾	48.00	24.0
2-stage	0.04	77.8	169	169	169	169	169	400	616 ²⁾	25.72	23.6
	0.08	158.0	83	83	83	83	83	323	303	12.66	
	0.16	315.5	42	42	42	42	42	212	152	6.34	

1) For motor speeds $n_e < 5$ rpm, you have to reduce the output torque M_a by factor 0.9.

2) Permitted frequency of occurrence on request.



MOVIGEAR® SNI with Extended Control Range

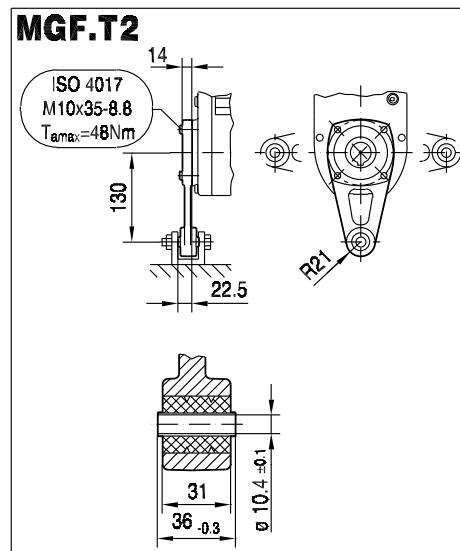
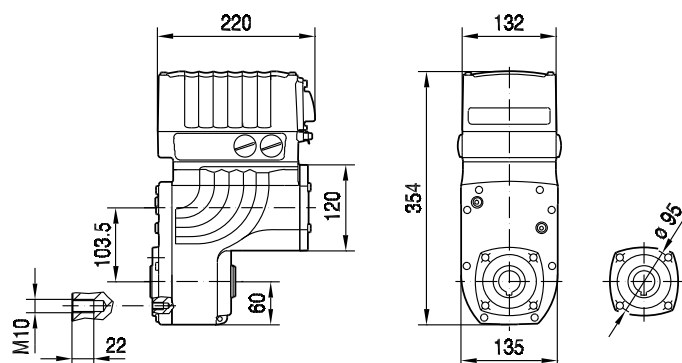
Dimension drawings of MOVIGEAR® SNI with extended control range

2.3 Dimension drawings of MOVIGEAR® SNI with extended control range

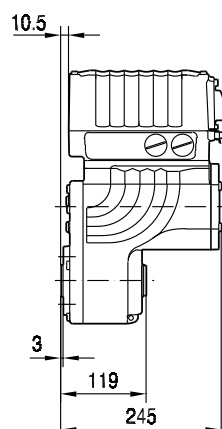
MGFAS2 - DSM - SNI

with extended control range

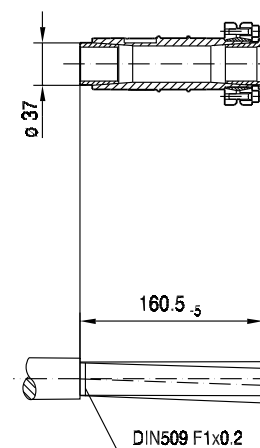
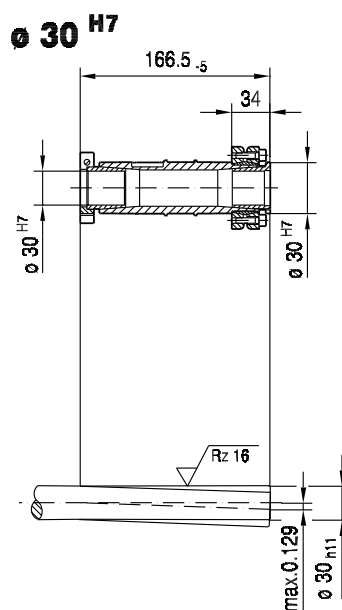
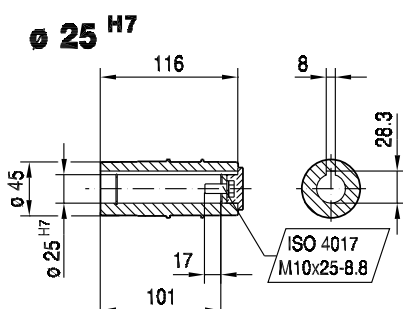
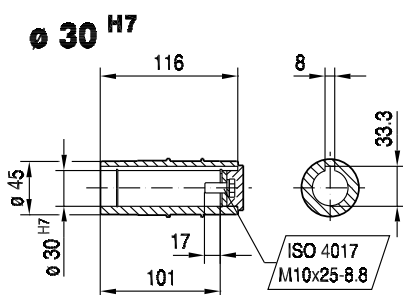
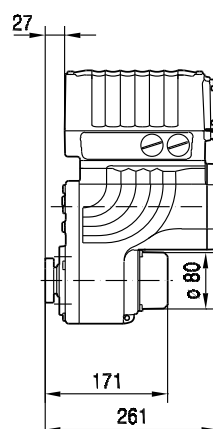
03 006 00 08



MGFAS2 ..



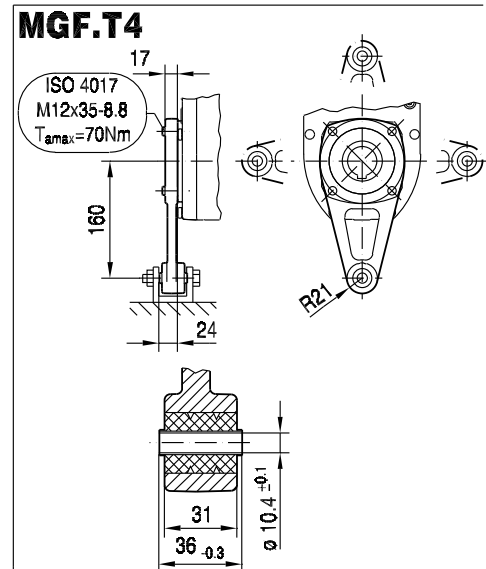
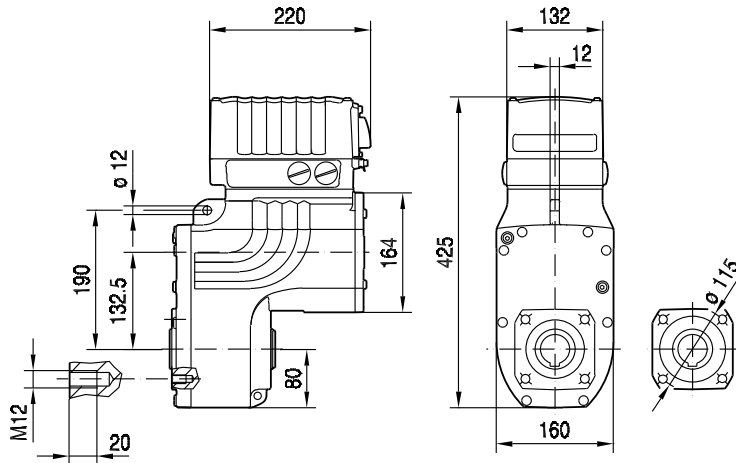
MGFTS2 ..



1678594699

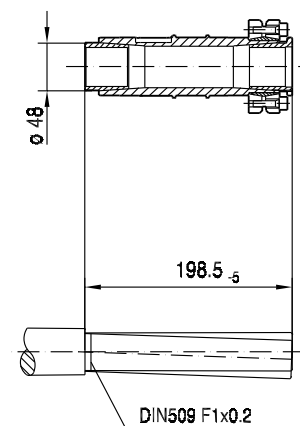
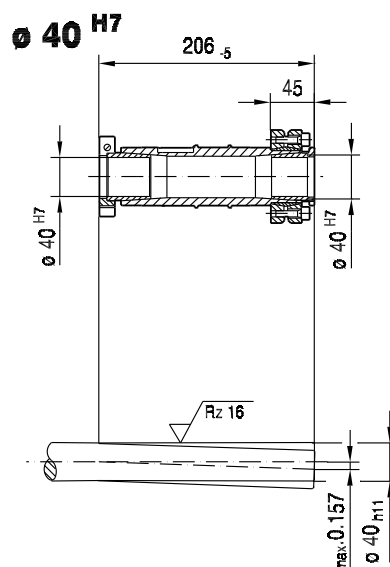
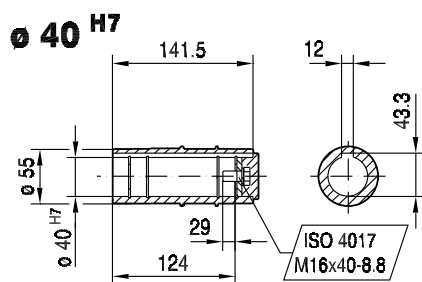
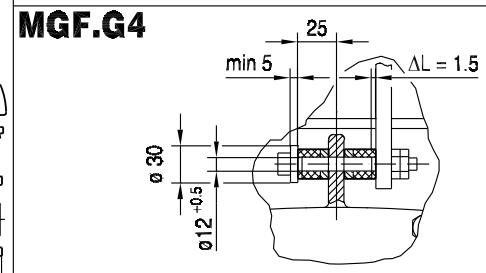
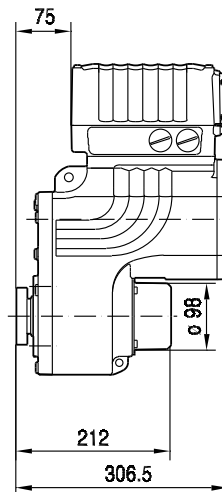
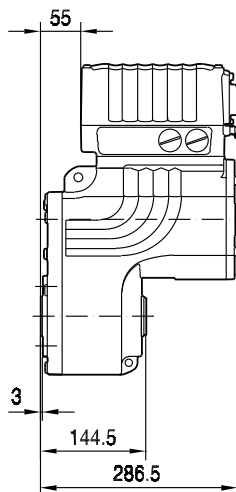
MGFAS4 - DSM - SNI
with extended control range

03 007 00 08

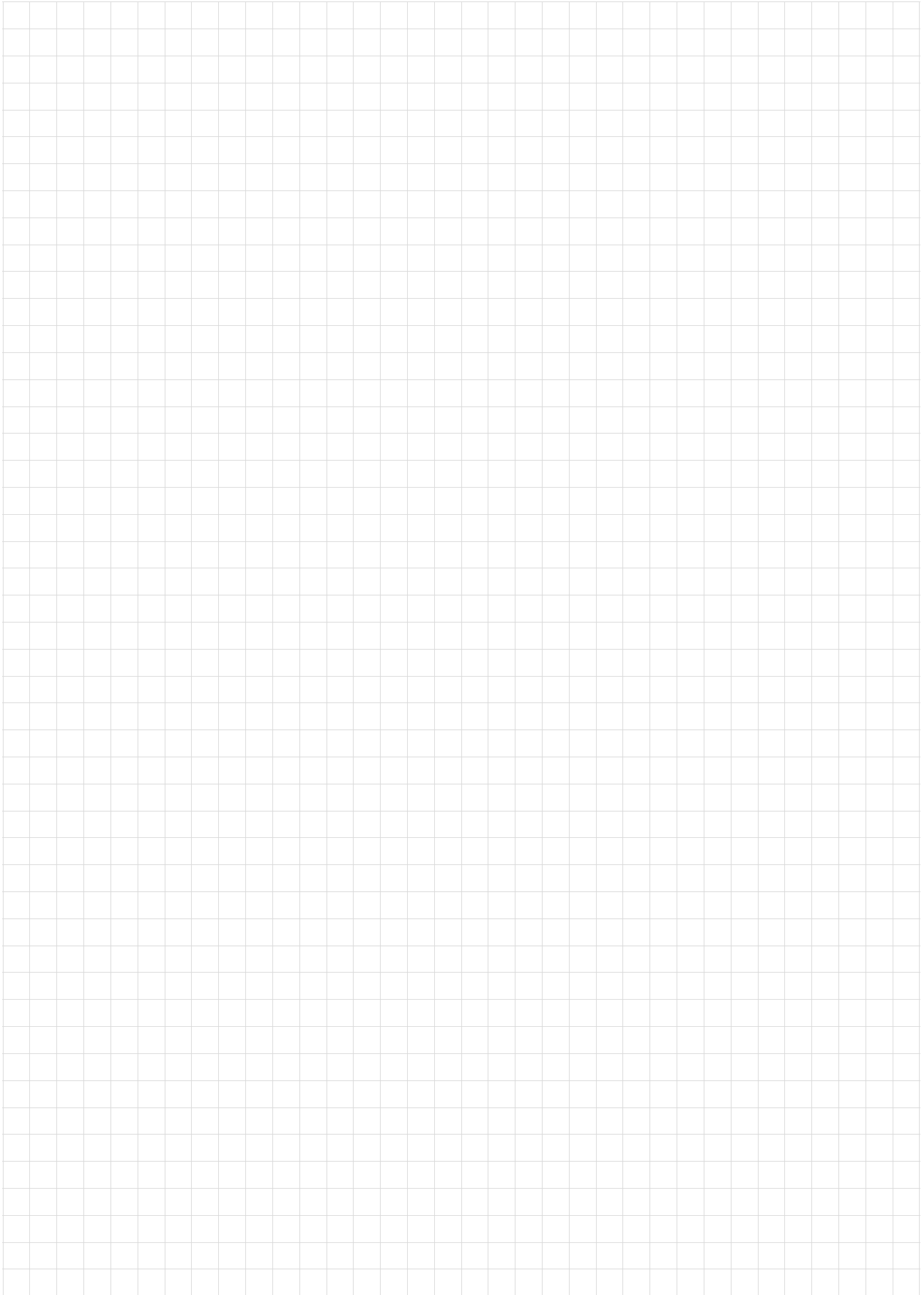


MGFAS4 ..

MGFTS4 ..



1678596619







SEW-EURODRIVE
Driving the world

SEW
EURODRIVE

SEW-EURODRIVE GmbH & Co KG
P.O. Box 3023
D-76642 Bruchsal/Germany
Phone +49 7251 75-0
Fax +49 7251 75-1970
sew@sew-eurodrive.com

→ www.sew-eurodrive.com