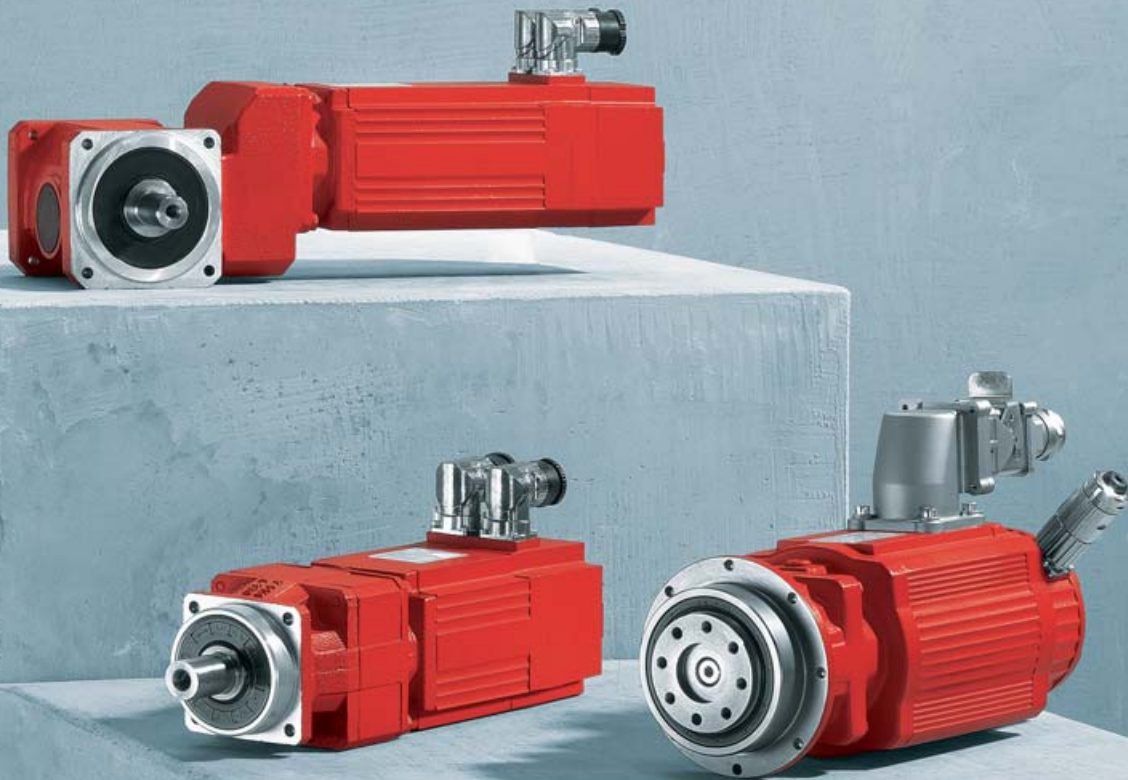


High speeds and high torque ratings  
combined with precision and high economic efficiency

**Low backlash PS.F and PS.C planetary servo  
gear units**

**Low backlash BS.F helical-bevel servo gear units**



## Three series make for thousands of options

The technical trends of today are higher processing speeds, increased precision and greater acceleration. In addition to these already demanding trends, the safety-relevant requirements on electromechanical drives are becoming more and more stringent.

SEW-EURODRIVE meets these new and diverse requirements by offering products that transfer larger torque ratings at high speeds and accept higher radial loads. In conjunction with consistently low circumferential backlash, high stiffness, and a high level of cost efficiency, these highly precise and extremely powerful servo gear units form the basis for a variety of servo gear units:

- The new, exceptionally economical **PS.C** planetary servo gear units
- The improved, low backlash **PS.F** planetary servo gear units
- The versatile, low backlash **BS.F** helical-bevel gear units

## The properties of the servo gear unit series at a glance

- Highest permitted torques
- High operating speeds
- High efficiency levels
- High torsional rigidity
- Finely stepped, integer gear ratios
- Wear-free operating performance of running gears
- Constantly low circumferential backlash
- Low noise generation
- Synthetic lubricants
- Compact, lightweight design
- Extremely high level of reliability, availability and a long service life
- Comprehensive and proven service based on manufacturer's expertise

Driving the world – with innovative drive solutions for all branches of industry and for every application. Products and systems from SEW-EURODRIVE for any application – worldwide. SEW-EURODRIVE products can be found in a variety of industries, e. g. automotive, building materials, food and beverage as well as metal-processing. The decision to use drive technology “made by SEW-EURODRIVE” stands for safety regarding functionality and investment.



## Servo gear units for direct mounting

The modular system allows for directly combining low backlash servo gear units with the dynamic servomotors of the DS, CM and CMP series from SEW-EURODRIVE. The commonly used adapter with clamp coupling is not necessary any longer which means the entire drive forms a form fit connection – from the motor shaft through to the output shaft of the gear unit.

Therefore, SEW-EURODRIVE is setting new standards in the safety of electromechanical drivelines: There is no longer a risk of the frictional connection becoming loose. The trend-setting direct motor mounting results in more major advantages for the entire drive. These are ...

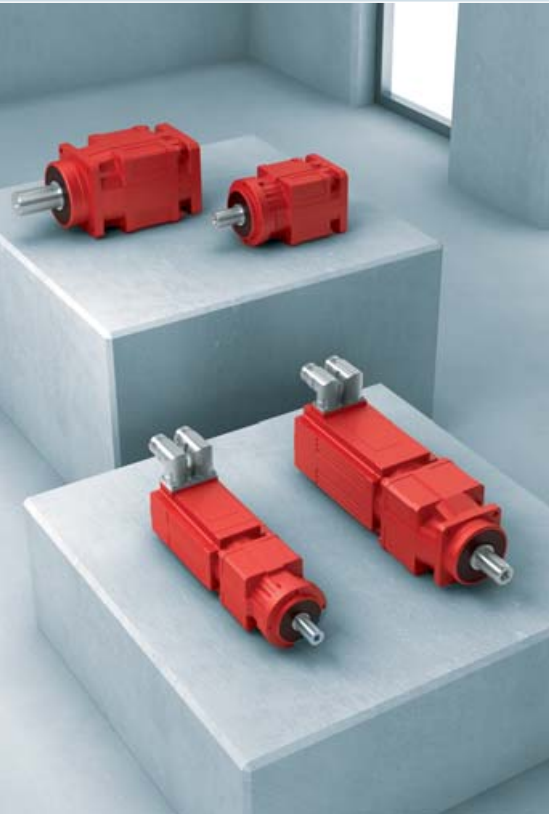
- higher torsional rigidity
- more dynamics
- less mass moment of inertia
- more compact
- more lightweight
- shorter
- completely form fit
- more cost-effective

The project planning data have been verified at SEW-EURODRIVE by diverse measurements and calculations. This provides additional confidence in an enduring and fault-free operation with low follow-up costs.



## Low backlash PS.C planetary servo gear units

### Profitability and flexibility



The low backlash **PS.C planetary servo gear units** are designed for torque classes from 30 to 320 Nm. They were designed to combine greatest possible flexibility with cost-efficiency as not every application demands components with maximum performance. These planetary servo gear units form the basis for versatile, dynamic, and above all cost optimized drive solutions. Additional particular properties:

- Compact, lightweight design
- Highest degree of reliability, availability and long service life
- Any mounting position is possible
- Synthetic lubricants
- Either oil or grease lubrication
- Lifetime lubrication
- Surface protection OS1 to OS4



PSC = B5 output, smooth output shaft  
PSKC = B5 output with keyway



PSCZ = B14 output, smooth output shaft  
PSKCZ = B14 output with keyway

Flexibility in motor mounting:

Apart from direct mounting to the motor, the gear unit can also be mounted using ECH adapters. Due to the modular system from SEW-EURODRIVE also the EPH adapters can be used for this purpose covering almost every motor application.

### Technical data

Size	Torque class [Nm]	Gear ratios	
		1-stage [i]	2-stage [i]
PSC 220	30	3, 5, 7, 10	15, 21, 25, 30, 35, 49, 50, 70, 100
PSC 320	65		
PSC 520	160		
PSC 620	320	5, 7, 10	25, 35, 49, 50, 70, 100

Circumferential backlash for all designs: Max. 10' single-stage, or max. 15' two-stage

## PS.F low backlash planetary servo gear units

### Performance and reliability

The low backlash **PS.F planetary servo gear units** are designed for torque classes from 25 to 3000 Nm. The permitted acceleration torque ratings are significantly higher than these values.

Three output variants are available:

- PSF: Solid shaft
- PSKF: Solid shaft with key
- PSBF: Flange block shaft according to EN ISO 9409



PS.F with solid shaft



PSBF with flange block shaft



### Technical data

Type	Size	Torque class [Nm]	Gear ratios <sup>⑥</sup>		Circumferential backlash [']	
			1-stage [i]	2-stage [i]	1-stage [i]	2-stage [i]
PSF	120	25	3 <sup>1)</sup> , 4 <sup>1)</sup> , 5, 7, 10	15 <sup>2)</sup> , 16 <sup>1)</sup> , 20, 25, 28, 35, 40 <sup>1)</sup> , 49, 70, 100	8, 4, 2	10, 6, 3
PSF / PSBF	220	55			6 <sup>3)</sup> , 3 <sup>4)</sup> , 1 <sup>5)</sup>	8, 4, 2
PSF / PSBF	320	110				
PSF / PSBF	520	300				
PSF / PSBF	620	600				
PSF / PSBF	720	1000				
PSF / PSBF	820	1750				
PSF	920	3000				

<sup>1)</sup> PSF only, <sup>2)</sup> PSBF 322/522 only, <sup>3)</sup> standard, <sup>4)</sup> reduced, <sup>5)</sup> minimized, <sup>6)</sup> other gear ratios on request

## Low backlash BS.F helical-bevel servo gear units

### Wide range of variants and compact design



The low backlash **BS.F helical-bevel servo gear units** are designed for torque classes from 40 to 1500 Nm. The permitted acceleration torque ratings are significantly higher than these values. These right-angle servo gear units are available in five output variants as standard:

- BSF: Solid shaft
- BSKF: Solid shaft with key
- BSBF: Flange block shaft (EN ISO 9409)
- BSHF: Hollow shaft with shrink disc
- BSAF: Hollow shaft with key (shaft mounted gear units)



Variants with hollow shaft are also available as shaft mounted gear units

All variants come equipped with a B5 mounting flange, or with foot mounting and torque arm as option. In this way, the drive units can be optimally integrated into the relevant application. The input stage with helical gearing and a hypoid bevel gear output stage result in gear ratio ranges that cover those of single-stage helical-bevel and hypoid gear units as well as those of single-stage helical-worm gear units with at the same time a high level of transmission quality. The circumferential backlash remains constantly low over the entire gear unit service life.

### Technical data

Size	Torque class [Nm]	Gear ratios 2-stage [i]	Circumferential backlash [']
202	40	3, 4, 6, 8, 10, 15, 20, 25	6 <sup>1)</sup> , 3 <sup>2)</sup>
302	80	3, 4, 6, 8, 10, 15, 20, 25, 30	
402	160		
502	320	3, 4, 6, 8, 10, 12, 15, 20, 25, 30, 35	
602	640	3, 4, 6, 8, 10, 12, 15, 20, 25, 30, 35, 40	
802	1500		

<sup>1)</sup> standard, <sup>2)</sup> reduced

# The fast way to perfect servo application solutions: The servo project planning tool

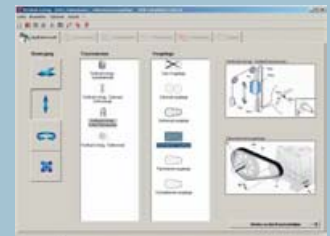
Applications from the servo field of drive engineering not only place high demands on the speed and precision of the drive technology implemented, but the project planning required for the applications is also very time-consuming and labor-intensive. The individual system solution provided by SEW-EURODRIVE not only

offers dynamic and precise drive technology, but also tailor-made software that guides the user quickly and simply to his or her goal: The servo project planning tool for optimum project planning of servo applications as part of the SEW Workbench.

## Overview of features

<b>Comprehensive:</b>	A selection of 90 servo applications and 100 graphics support the project planning process
<b>Structured:</b>	Structured overview with tab pages
<b>Easy to use:</b>	Travel profiles can be defined using the drag & drop function
<b>Automatic:</b>	Optimum gear ratio of the drives can be determined. The drive is checked after each change the user makes
<b>User-friendly:</b>	A number of product combinations can be compared directly with one another and the project planning examples can be archived and sent to other user

### Screenshots



Product	Model	Power	Speed	Acceleration
SEW	SEW	SEW	SEW	SEW
SEW	SEW	SEW	SEW	SEW
SEW	SEW	SEW	SEW	SEW

## How we're driving the world

With people who think fast and develop the future with you.

With a worldwide service network that is always close at hand.

With drives and controls that automatically improve your productivity.

With comprehensive knowledge in virtually every branch of industry today.

With uncompromising quality that reduces the cost and complexity of daily operations.



**SEW-EURODRIVE**  
Driving the world

With a global presence that offers responsive and reliable solutions. Anywhere.

With innovative technology that solves tomorrow's problems today.

With online information and software updates, via the Internet, available around the clock.

## SEW-EURODRIVE is right there for you:

### Argentina

Phone +54 3327 4572-84  
Fax +54 3327 4572-21  
sewar@sew-eurodrive.com.ar

### Australia

Phone +61 3 9933-1000  
Fax +61 3 9933-1003  
enquires@sew-eurodrive.com.au

### Austria

Phone +43 1 617 55 00-0  
Fax +43 1 617 55 00-30  
sew@sew-eurodrive.at

### Belgium

Phone +32 10 231-311  
Fax +32 10 231-336  
info@sew.be

### Brazil

Phone +55 11 6489-9133  
Fax +55 11 6480-3328  
sew@sew.com.br

### Canada

Phone +1 905 791-1553  
Fax +1 905 791-2999  
marketing@sew-eurodrive.ca

### Chile

Phone +56 2 75770-00  
Fax +56 2 75770-01  
ventas@sew-eurodrive.cl

### China

Phone +86 22 25322612  
Fax +86 22 25322611  
gm-tianjin@sew-eurodrive.cn

### Colombia

Phone +57 1 54750-50  
Fax +57 1 54750-44  
sewcol@sew-eurodrive.com.co

### Czech Republic

Phone +420 220121234  
Fax +420 220121237  
sew@sew-eurodrive.cz

### Denmark

Phone +45 43 9585-00  
Fax +45 43 9585-09  
sew@sew-eurodrive.dk

### Finland

Phone +358 201 589 300  
Fax +358 3 7806-211  
sew@sew.fi

### France

Phone +33 3 88 73 67 00  
Fax +33 3 88 73 66 00  
sew@usocome.com

### Great Britain

Phone +44 1924 893-855  
Fax +44 1924 893-702  
info@sew-eurodrive.co.uk

### Hong Kong

Phone +852 2 7960477  
Fax +852 2 7959129  
contact@sew-eurodrive.hk

### Hungary

Phone +36 1 437 06-58  
Fax +36 1 437 06-50  
office@sew-eurodrive.hu

### India

Phone +91 265 2831086  
Fax +91 265 2831087  
mdoffice@seweurodriveindia.com

### Italy

Phone +39 02 96 9801  
Fax +39 02 96 799781  
sewit@sew-eurodrive.it

### Japan

Phone +81 538 373811  
Fax +81 538 373814  
sewjapan@sew-eurodrive.co.jp

### Malaysia

Phone +60 7 3549409  
Fax +60 7 3541404  
sales@sew-eurodrive.com.my

### Mexico

Phone +52 442 1030-300  
Fax +52 442 1030-301  
scmexico@sew-eurodrive.com.mx

### Netherlands

Phone +31 10 4463-700  
Fax +31 10 4155-552  
info@vector.nu

### New Zealand

Phone +64 9 2745627  
Fax +64 9 2740165  
sales@sew-eurodrive.co.nz

### Norway

Phone +47 69 241-020  
Fax +47 69 241-040  
sew@sew-eurodrive.no

### Peru

Phone +51 1 3495280  
Fax +51 1 3493002  
sewperu@sew-eurodrive.com.pe

### Poland

Phone +48 42 67710-90  
Fax +48 42 67710-99  
sew@sew-eurodrive.pl

### Portugal

Phone +351 231 20 9670  
Fax +351 231 20 3685  
infosew@sew-eurodrive.pt

### Russia

Phone +7 812 3332522  
Fax +7 812 3332523  
sew@sew-eurodrive.ru

### Singapore

Phone +65 68621701  
Fax +65 68612827  
sewsingapore@sew-eurodrive.com

### Slovakia

Phone +421 2 49595201  
Fax +421 2 49595200  
sew@sew-eurodrive.sk

### South Africa

Phone +27 11 248-7000  
Fax +27 11 494-3104  
dross@sew.co.za

### South Korea

Phone +82 31 492-8051  
Fax +82 31 492-8056  
master@sew-korea.co.kr

### Spain

Phone +34 94 4318470  
Fax +34 94 4318471  
info@sew-eurodrive.es

### Sweden

Phone +46 36 3442-00  
Fax +46 36 3442-80  
info@sew-eurodrive.se

### Switzerland

Phone +41 61 41717-17  
Fax +41 61 41717-00  
info@imhof-sew.ch

### Thailand

Phone +66 38 454281  
Fax +66 38 454288  
sewthailand@sew-eurodrive.com

### Turkey

Phone +90 216 4419163  
Fax +90 216 3055867  
sew@sew-eurodrive.com.tr

### Ukraine

Phone +380 56 3703211  
Fax +380 56 3722078  
sew@sew-eurodrive.ua

### USA

Phone +1 864 439-7537  
Fax +1 864 439-0566  
cslyman@seweurodrive.com

### Venezuela

Phone +58 241 832-9804  
Fax +58 241 838-6275  
ventas@sew-eurodrive.com.ve

**SEW**  
**EURODRIVE**

SEW-EURODRIVE GmbH & Co KG  
P.O.Box 30 23  
D-76642 Bruchsal/Germany  
Phone +49 7251 75-0  
Fax +49 7251 75-1970  
sew@sew-eurodrive.com

→ [www.sew-eurodrive.com](http://www.sew-eurodrive.com)