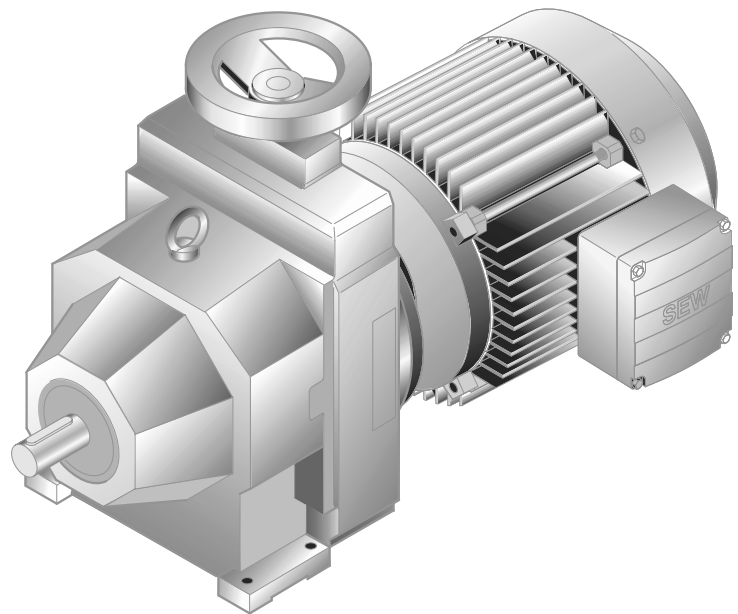
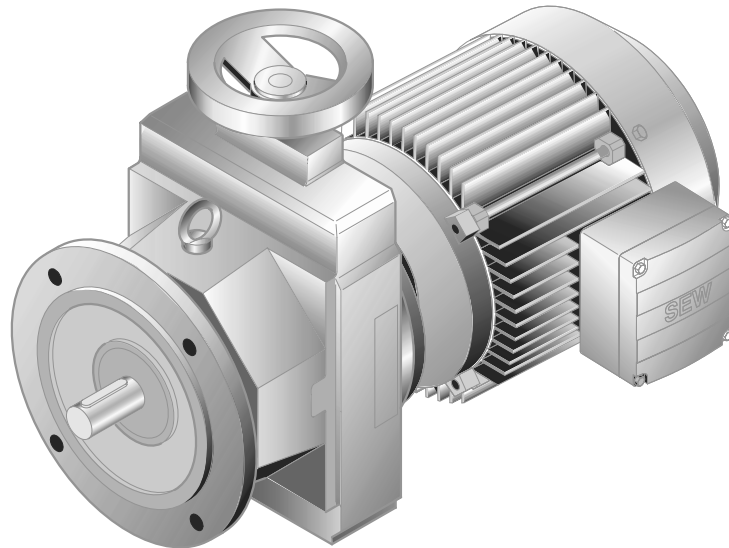


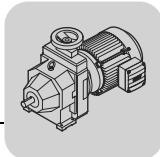
13 D/DF..

13.1 D/DF..DT/DV..



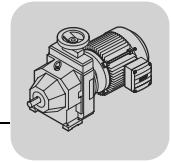
13

50603AXX

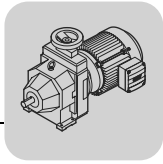


13.2 D/DF..DT/DV.. [kW]

R = 1:5													
P_m [kW]	n_{a1}	-	n_{a2}	P_{a1}	-	P_{a2}					d_{RZ} [mm]	m [kg]	
	[1/min]			[kW]			D	DF	DT	Motor			
0.25	167	-	830	0.13	-	0.22	D	DF	DT	80N8	10/12	24	384
	216	-	1075	0.16	-	0.22	D	DF	DT	71D6	10/12	21	384
0.37	177	-	884	0.23	-	0.33	D	DF	DT	90S8	14/16	41	385
	221	-	1100	0.17	-	0.33	D	DF	DT	80K6	10/12	23	384
	338	-	1685	0.20	-	0.29	D	DF	DT	71D4	10/12	21	384
0.55	177	-	884	0.28	-	0.49	D	DF	DT	90L8	14/16	44	385
	221	-	1100	0.17	-	0.49	D	DF	DT	80N6	10/12	24	384
	333	-	1660	0.26	-	0.45	D	DF	DT	80K4	10/12	23	384
	662	-	3295	0.31	-	0.35	D	DF	DT	71D2	10/12	21	384
0.75	180	-	897	0.28	-	0.67	D	DF	DV	100M8	14/16	48	385
	234	-	1170	0.38	-	0.67	D	DF	DT	90S6	14/16	41	385
	338	-	1685	0.26	-	0.63	D	DF	DT	80N4	10/12	24	384
	662	-	3295	0.35	-	0.53	D	DF	DT	80K2	10/12	23	384
1.1	160	-	802	0.67	-	0.98	D	DF	DV	100L8	18/22	77	386
	240	-	1195	0.38	-	0.98	D	DF	DT	90L6	14/16	44	385
	365	-	1820	0.57	-	0.93	D	DF	DT	90S4	14/16	41	385
	662	-	3295	0.35	-	0.85	D	DF	DT	80N2	10/12	24	384
1.5	165	-	826	0.69	-	1.4	D	DF	DV	112M8	18/22	85	386
	216	-	1085	0.92	-	1.4	D	DF	DV	100M6	18/22	75	386
	367	-	1835	0.57	-	1.3	D	DF	DT	90L4	14/16	44	385
	703	-	3510	0.81	-	1.2	D	DF	DT	90S2	14/16	41	385
2.2	165	-	826	0.69	-	2.0	D	DF	DV	132S8	18/22	93	386
	221	-	1110	0.92	-	2.0	D	DF	DV	112M6	18/22	85	386
	367	-	1835	0.57	-	1.9	D	DF	DV	100M4	14/16	48	385
	711	-	3550	0.84	-	1.8	D	DF	DT	90L2	14/16	44	385
3.0	221	-	1110	0.92	-	2.8	D	DF	DV	132S6	18/22	93	386
	329	-	1650	1.4	-	2.6	D	DF	DV	100L4	18/22	77	386
	659	-	3305	1.6	-	2.5	D	DF	DV	100M2	18/22	75	386
4.0	334	-	1675	1.4	-	3.6	D	DF	DV	112M4	18/22	85	386
	673	-	3375	1.6	-	3.4	D	DF	DV	112M2	18/22	85	386



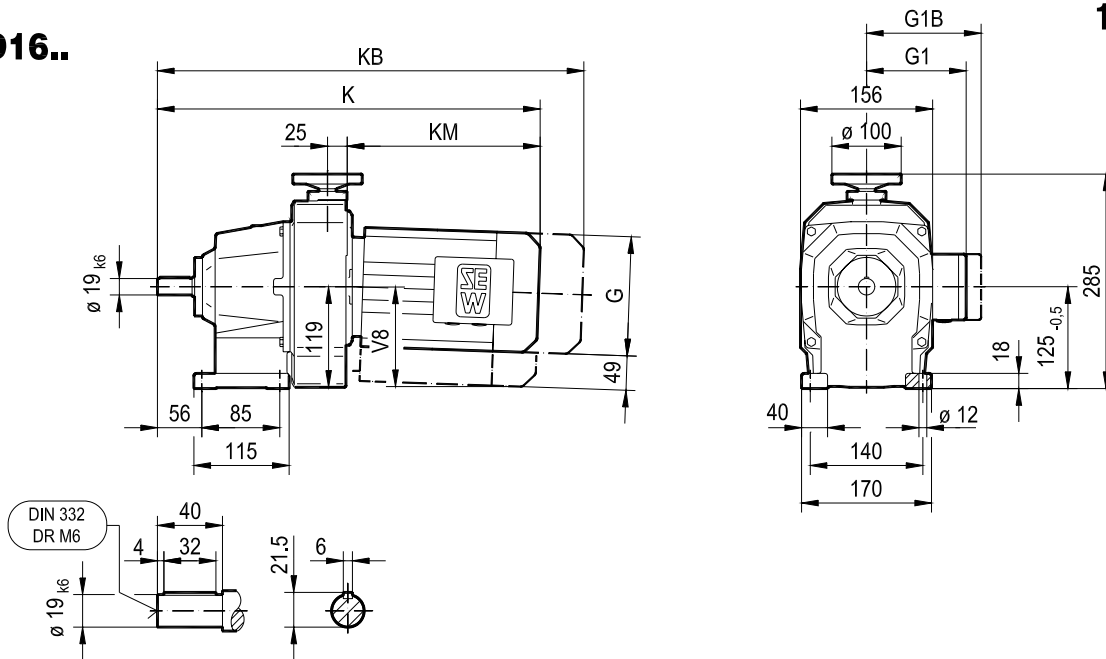
R = 1:5													
P_m [kW]	n_{a1} [1/min]	-	n_{a2} [1/min]	P_{a1} [kW]	-	P_{a2} [kW]				d_{RZ} [mm]	m [kg]		
5.5	336	-	1685	1.4	-	5.0	D	36	DV	132S4	18/22	93	386
	DF	36											
	678	-	3400	1.6	-	4.8	D	36	DV	132S2	18/22	93	386
	DF	36											
R = 1:4													
3.0	203	-	806	1.2	-	2.7	D	46	DV	132M8	22/28	145	387
4.0	203	-	806	1.2	-	3.6	D	46	DV	132ML8	22/28	155	387
	DF	46											
	270	-	1075	1.7	-	3.6	D	46	DV	132M6	22/28	145	387
	DF	46											
5.5	200	-	795	1.4	-	5.0	D	46	DV	160M8	22/28	160	387
	DF	46											
	270	-	1075	1.7	-	5.0	D	46	DV	132ML6	22/28	155	387
	DF	46											
7.5	270	-	1075	1.8	-	6.8	D	46	DV	160M6	22/28	160	387
	DF	46											
	403	-	1600	2.8	-	6.8	D	46	DV	132M4	22/28	145	387
	DF	46											
	817	-	3250	3.8	-	6.7	D	46	DV	132M2	22/28	145	387
9.2	406	-	1615	2.8	-	8.3	D	46	DV	132ML4	22/28	155	387
	DF	46											
	814	-	3235	3.8	-	8.2	D	46	DV	132ML2	22/28	155	387
	DF	46											
	11.0	406	-	1615	2.8	-	10.0	D	46	DV	160M4	22/28	160
	DF	46											
	817	-	3250	3.8	-	9.8	D	46	DV	160M2	22/28	160	387
	DF	46											



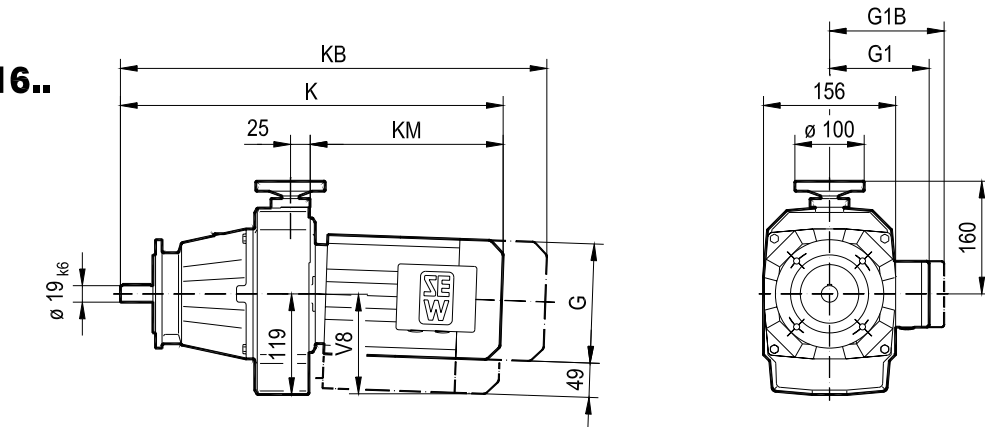
13.3 D/DF..DT/DV.. [mm]

15 089 001

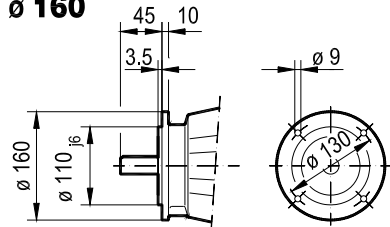
D16..



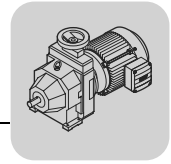
DF16..



$\varnothing 160$

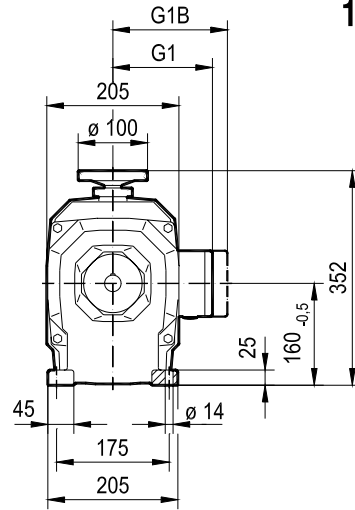
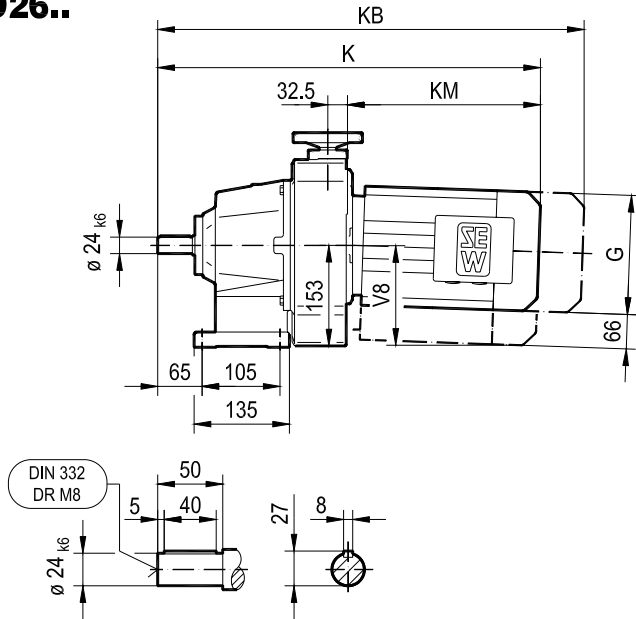


(→ 151)		G	G1	G1B	K	KB	KM	V8
D16	DT71D	145	122	127	431	495	198	116
DF16	DT80..	145	122	127	481	545	248	118

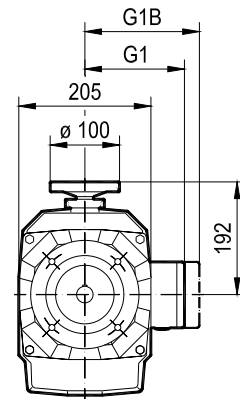
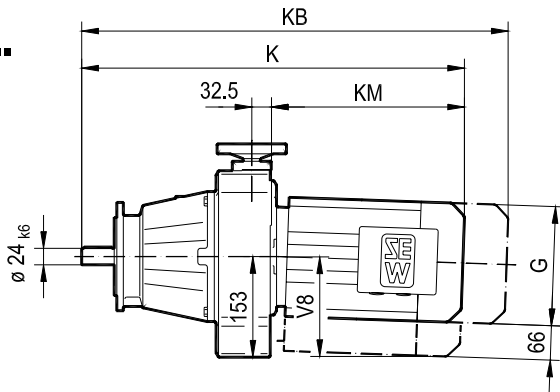


15 090 001

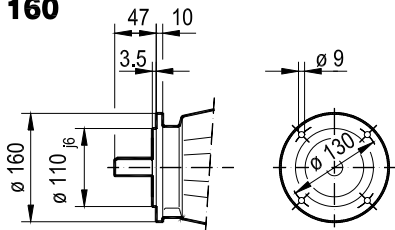
D26..



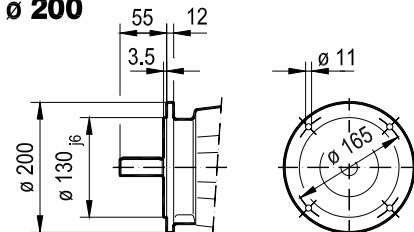
DF26..

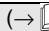


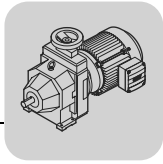
$\varnothing 160$



$\varnothing 200$

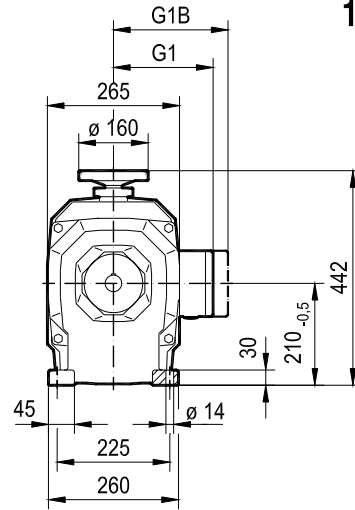
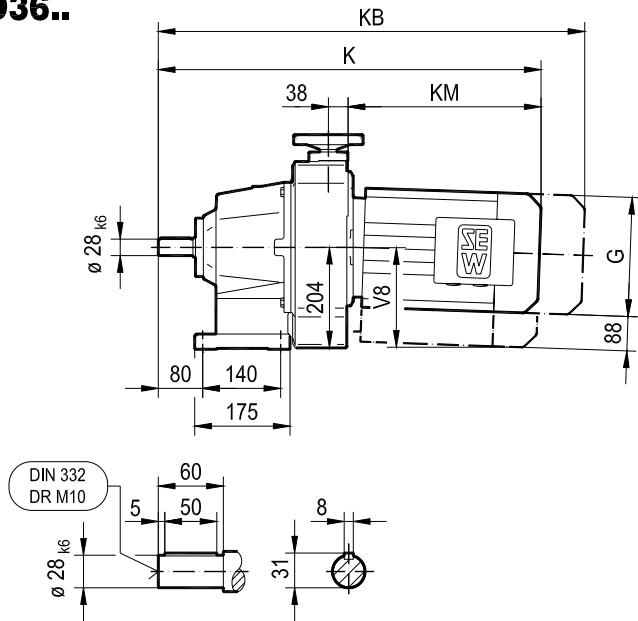


(→  151)		G	G1	G1B	K	KB	KM	V8
D26 DF26	DT90..	197	154	161	523	608	248	154
	DV100M	197	166	166	573	658	298	156
	DV100L	197	166	166	603	688	328	158

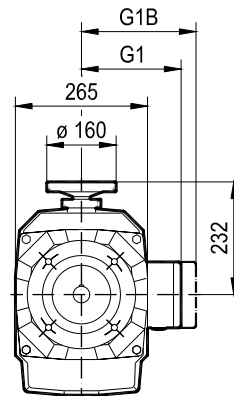
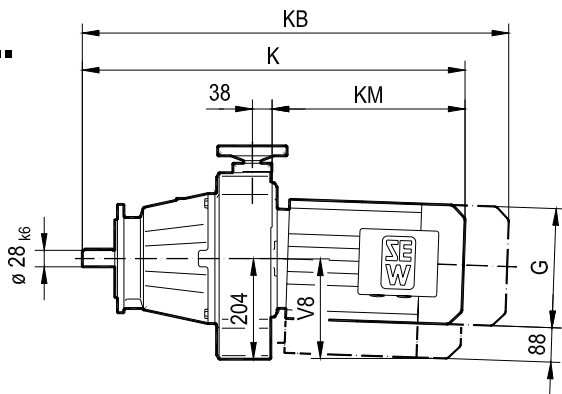


15 091 001

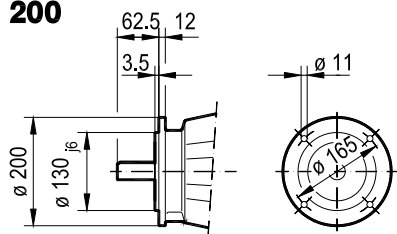
D36..



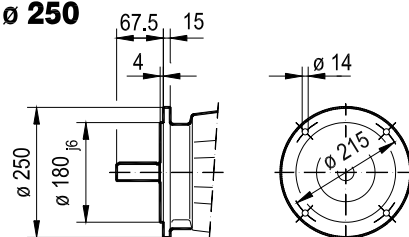
DF36..



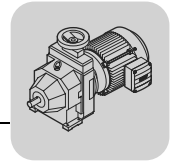
$\varnothing 200$



$\varnothing 250$

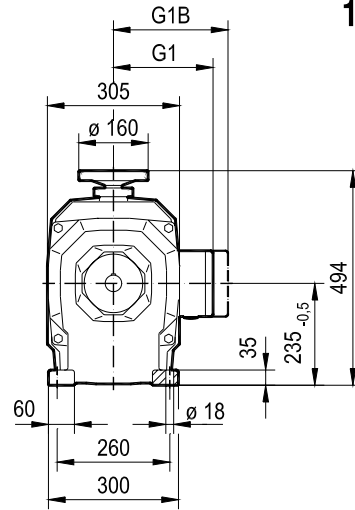
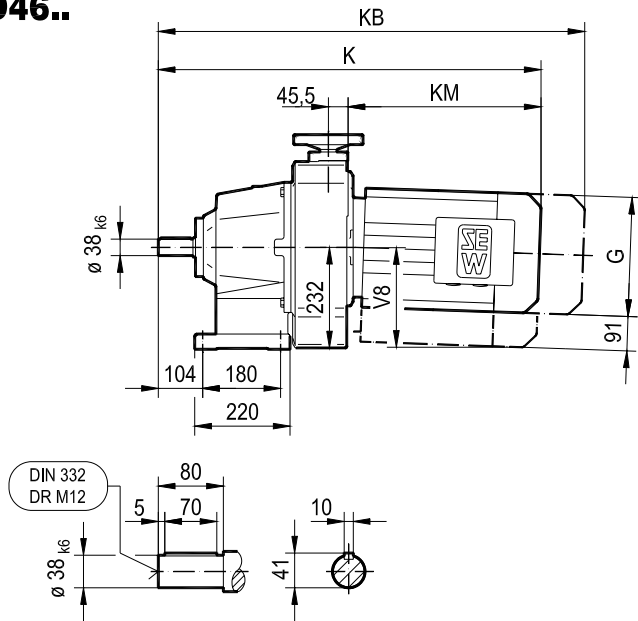


(→ 151)		G	G1	G1B	K	KB	KM	V8
D36 DF36	DV100M	197	166	166	655	740	309	184
	DV100L	197	166	166	685	770	339	186
	DV112M	221	179	182	678	758	332	196
	DV132S	221	179	182	723	803	377	198

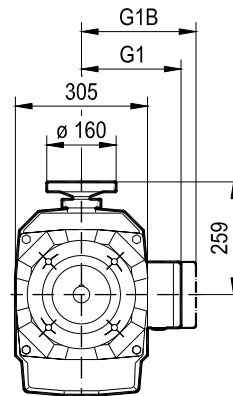
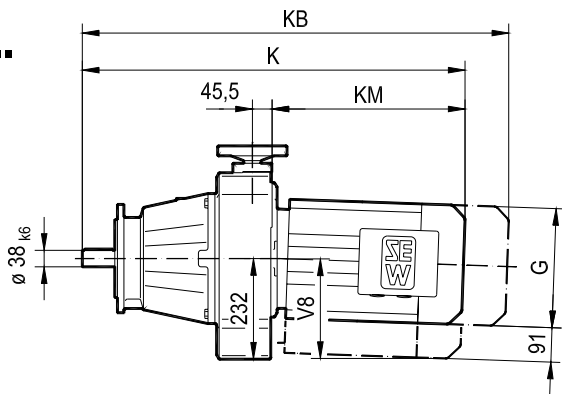


15 092 001

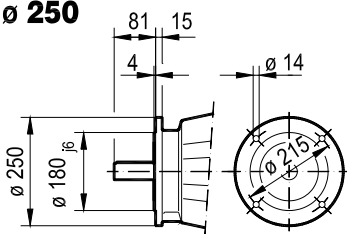
D46..



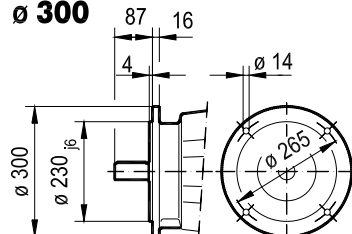
DF46..



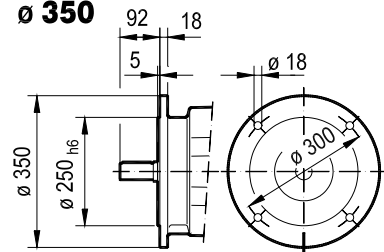
∅ 250



∅ 300



∅ 350



(→ 151)	G	G1	G1B	K	KB	KM	V8
D46	275	230	230	824	936	388	235
DF46	275	230	230	884	996	448	237
	275	230	230	884	996	448	237

