



MOVIDYN[®] Bracket for Heat Sink

Edition

10/2001

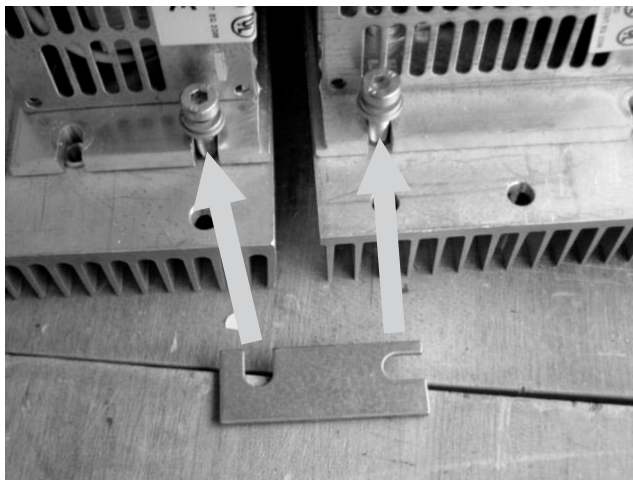


1 Connection Bracket for Heat Sinks in Multi-Axis Applications

- Application range** The connection bracket is used when the following factors coincide:
- MOVIDYN® multi-axis applications (power supply module and an axis module or several axis modules)
 - Use of more than one heat sink
 - Mounting back wall with poor conductivity

Installation The connection brackets should connect the heat sinks so that no EMC problems can arise. A pair of connection brackets, part number 815 841 X, is supplied with every power supply module.

The connection brackets can be used with heat sink types DKE, DKS and DKF.



05287AXX

Fig. 1: Installation of the connection bracket



The connection brackets are fastened at the top and bottom with the existing bolts that are used for bolting the units onto the heat sinks.

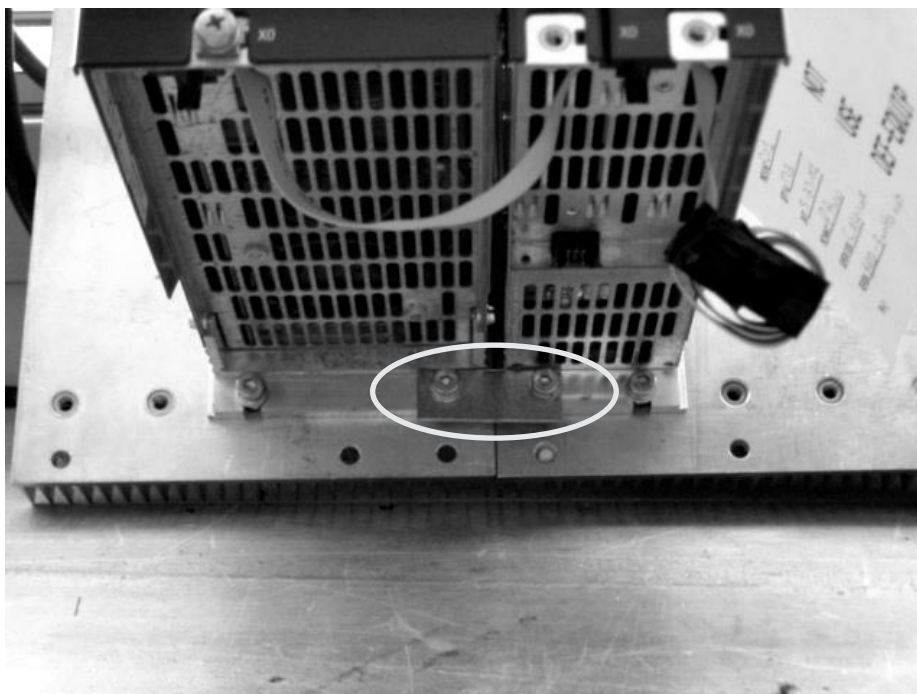


Fig. 2: Correctly installed bracket on the underside

05288AXX

SEW-EURODRIVE GmbH & Co · P.O. Box 3023 · D-76642 Bruchsal/Germany · Phone +49-7251-75-0
Fax +49-7251-75-1970 · <http://www.sew-eurodrive.com> · sew@sew-eurodrive.com

SEW
EURODRIVE

