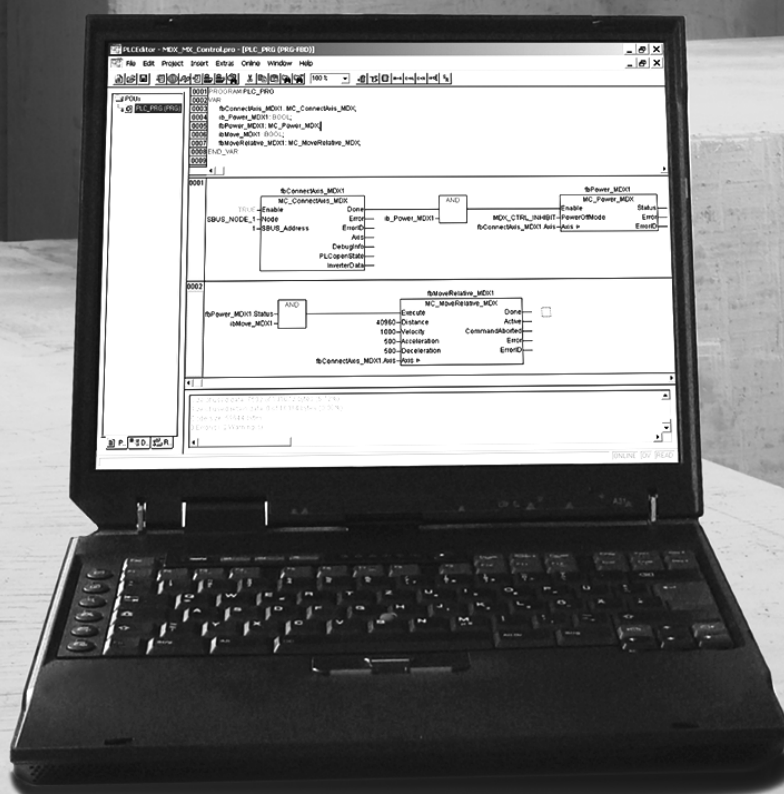



SEW
EURODRIVE

SEW-EURODRIVE GmbH & Co KG
 P.O. Box 3023
 76642 Bruchsal/Germany
 Phone +49 7251 75-0
 Fax +49 7251 75-1970
 sew@sew-eurodrive.com

→ www.sew-eurodrive.com

Revision



“SyncCrane” Application Module

1 Revision

This revision applies to the "SyncCrane Application Module" manual, part number 21275793, edition 09/2014.

Replacement

The entire chapter 2.3 "Bus systems" is replaced.

1.1 Bus systems

A bus system makes it possible to adapt electronic drive components to the particulars of the machinery within wide limits. There is a risk that a change of parameters that cannot be detected externally may result in unexpected (but not uncontrolled) system behavior and may have a negative impact on operational safety, system availability, or data security.

Especially in Ethernet-based networked systems and with engineering interfaces, make sure that unauthorized access is prevented.

Use IT-specific safety standards to increase access protection to the ports. For a port overview, refer to the respective technical data of the used device.