

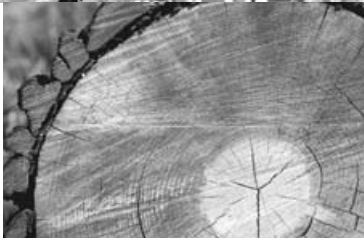
Encoder Systems Wiring Diagram for HIPERFACE® Encoders

FE000000

Edition 12/2005

11406615 / EN

Manual





1 Important Notes

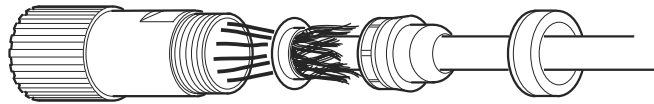


- **This supplementary information does not replace the detailed operating instructions!**
- **Only trained personnel are allowed to perform installation and startup. Adhere to all applicable accident prevention regulations and the encoder manual.**



2 Prefabricated Cables

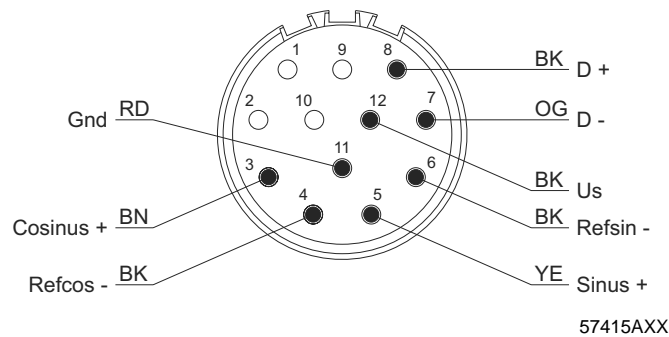
2.1 Shielding



50477AXX

Apply the shielding in the cable gland of the encoder.

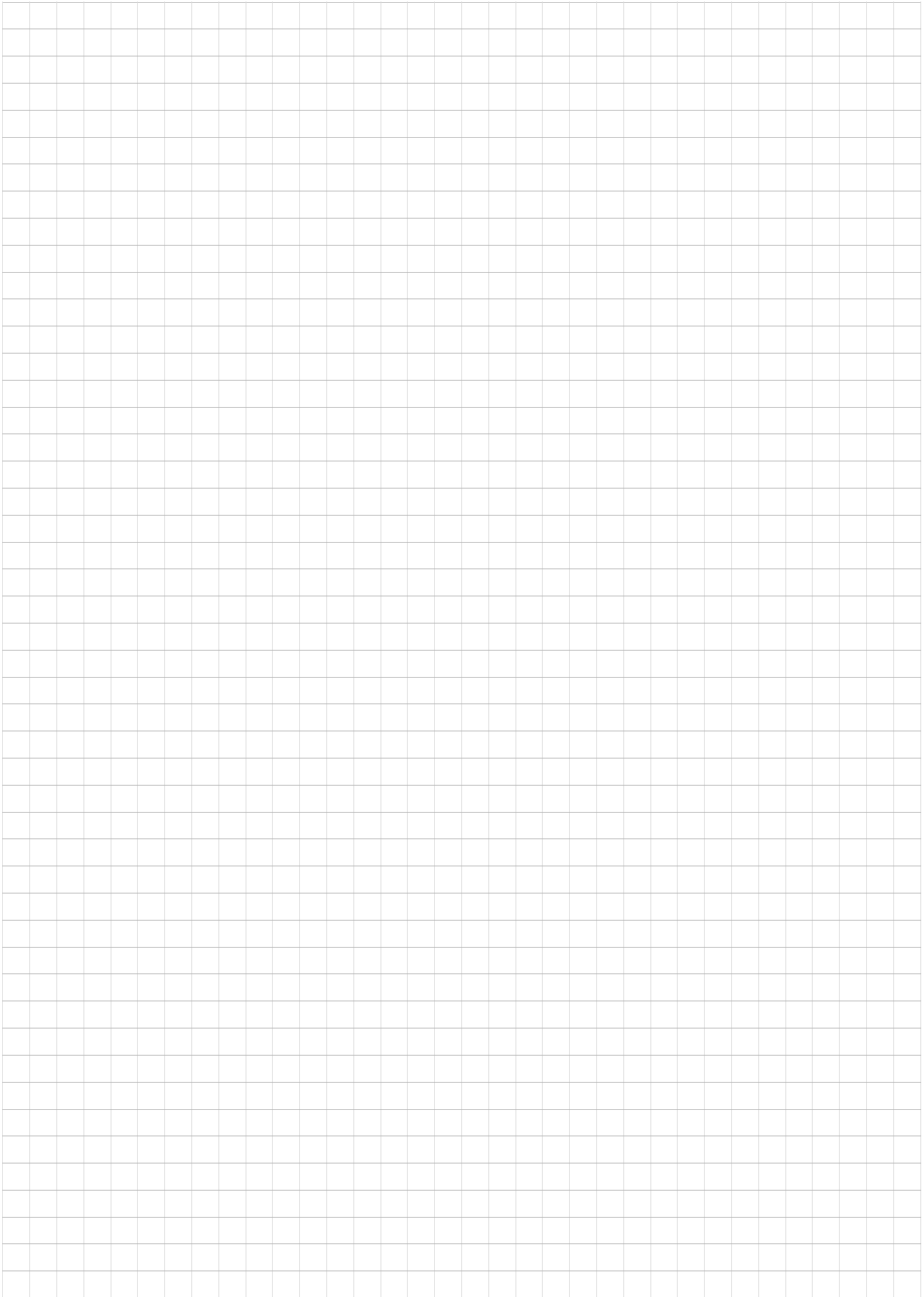
2.2 Wiring diagram for encoders AS3H, AS4H, AV1H, ES3H, ES4H and EV1H

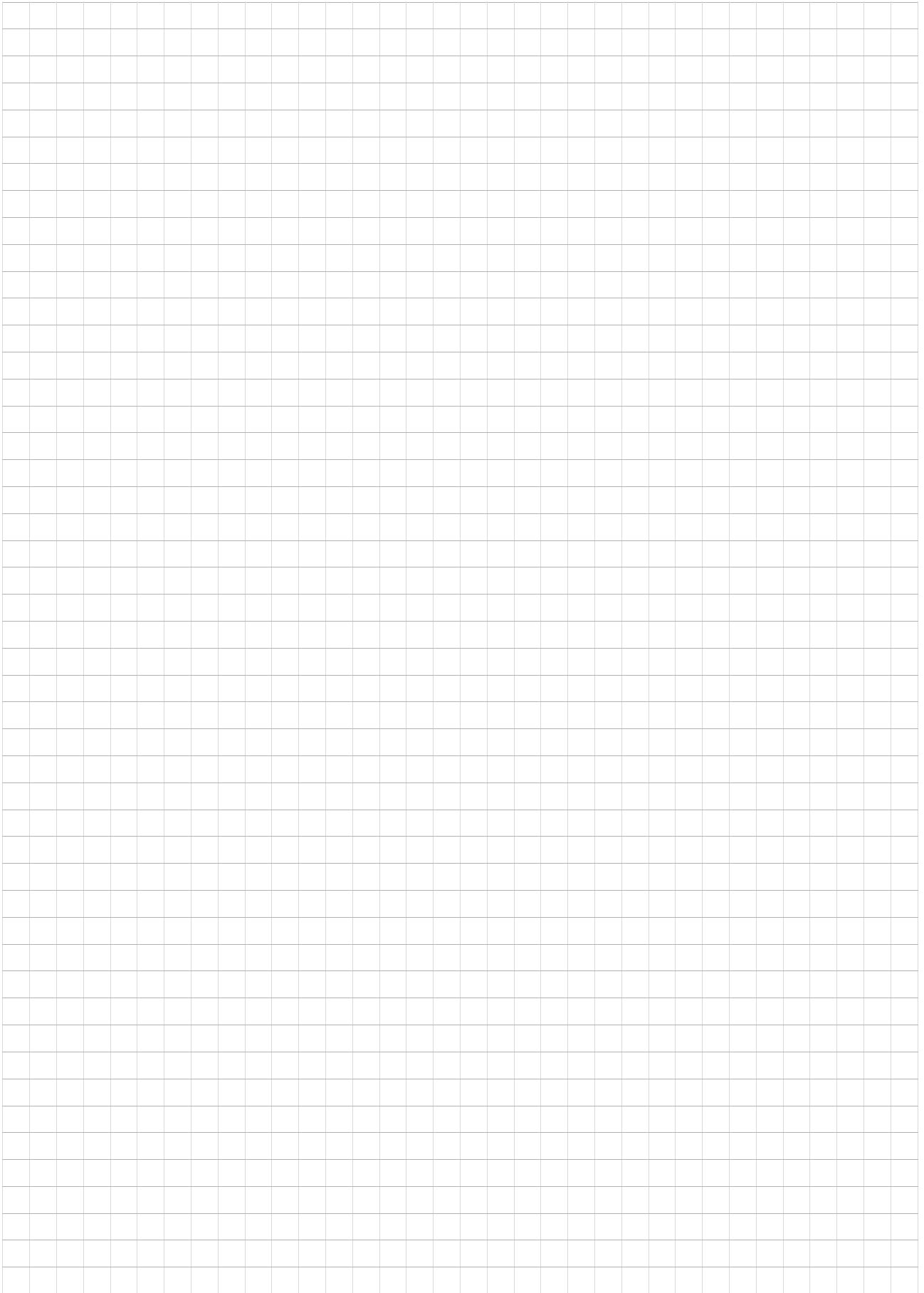


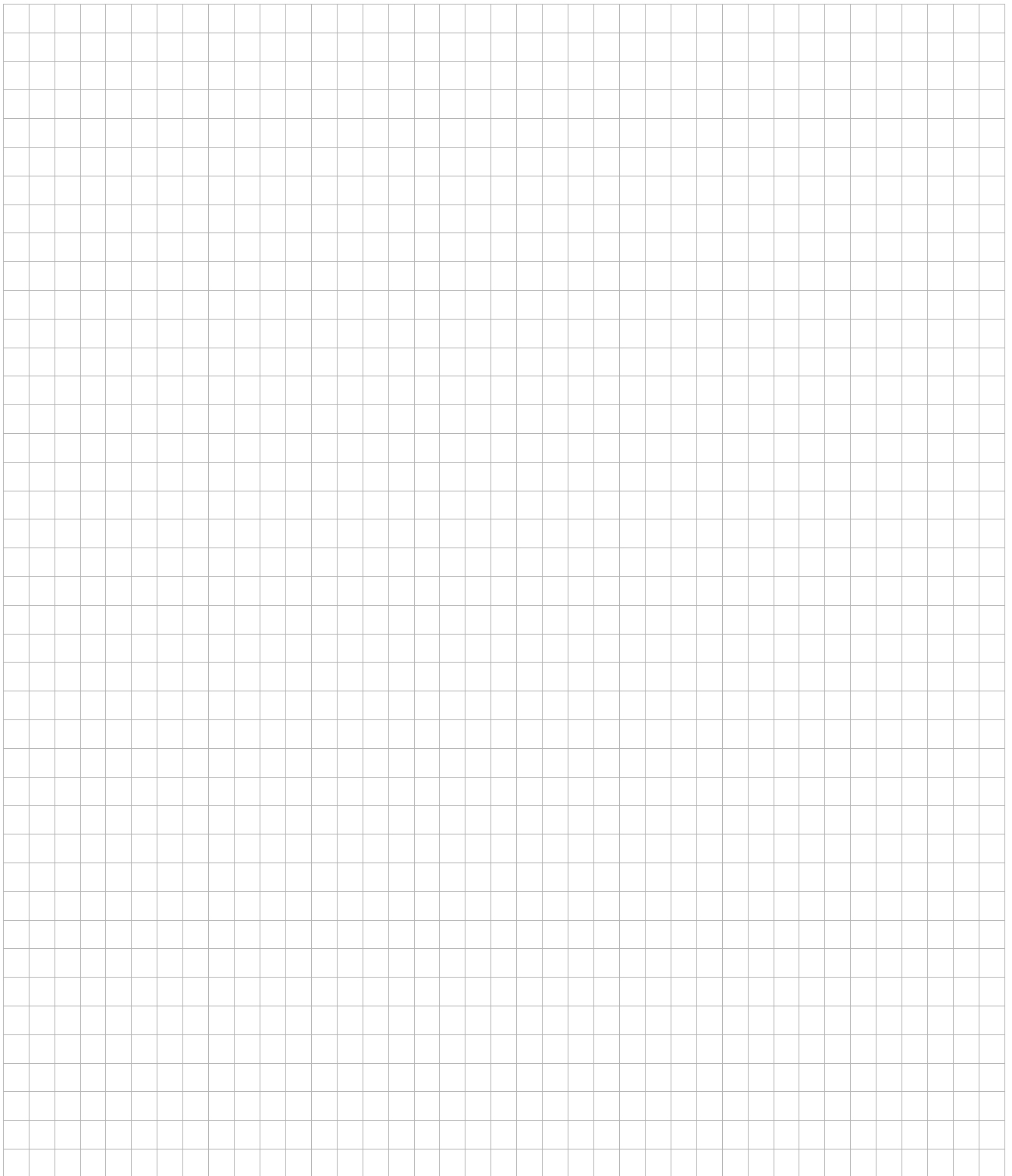
2.2.1 Core colors

The core colors of the prefabricated cables from SEW-EURODRIVE are entered in the following table.

Pin	Function	Core colors (IEC757) 12-core
1	–	–
2	–	–
3	Cosine +	Brown (BN)
4	Refcos –	Black (BK)
5	sine +	Yellow (YE)
6	Refsin –	Black (BK)
7	D –	Orange (OG)
8	D +	Black (BK)
9	–	–
10	–	–
11	GND	Red (RD)
12	U _S	Black (BK)







How we're driving the world

With people who think fast and develop the future with you.

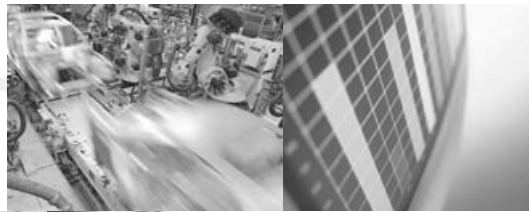


With a worldwide service network that is always close at hand.

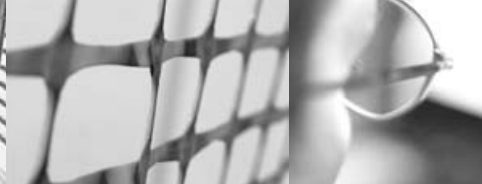
With drives and controls that automatically improve your productivity.



With comprehensive knowledge in virtually every branch of industry today.



With uncompromising quality that reduces the cost and complexity of daily operations.



SEW-EURODRIVE
Driving the world

With a global presence that offers responsive and reliable solutions. Anywhere.

With innovative technology that solves tomorrow's problems today.

With online information and software updates, via the Internet, available around the clock.



SEW
EURODRIVE

SEW-EURODRIVE GmbH & Co KG
P.O. Box 3023 · D-76642 Bruchsal / Germany
Phone +49 7251 75-0 · Fax +49 7251 75-1970
sew@sew-eurodrive.com

→ www.sew-eurodrive.com